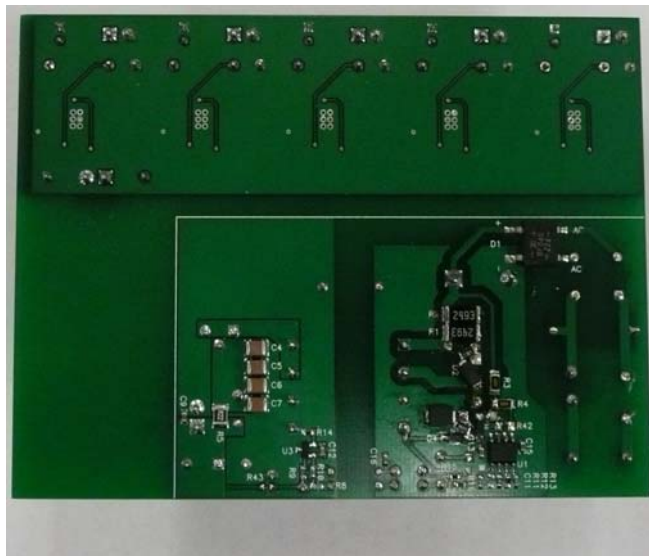
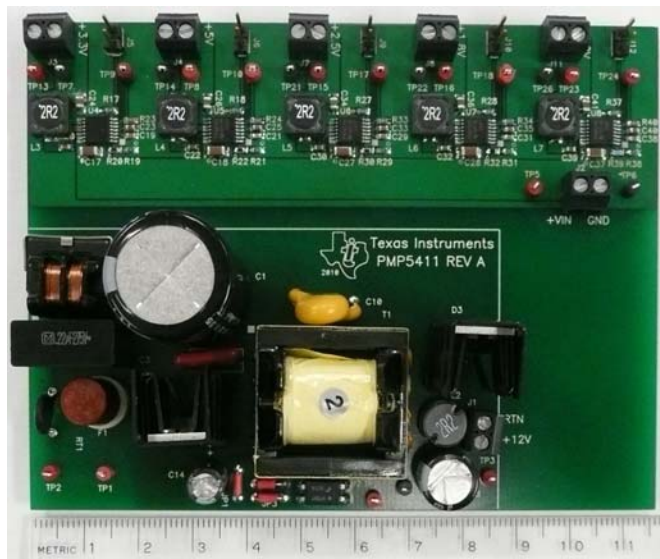


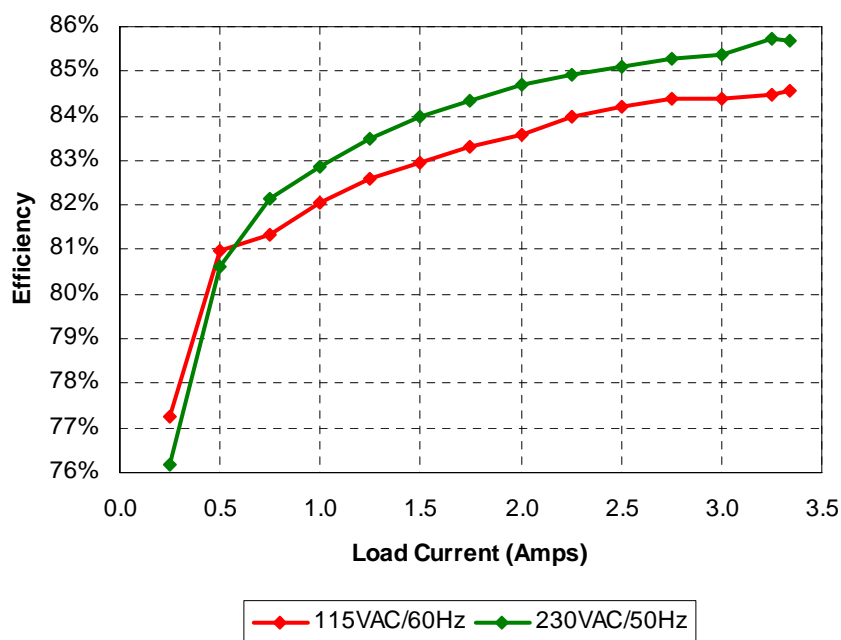
1 Photo

The photographs below show the top and bottom views of the PMP5411 Rev B demo board. The circuit is built on a PMP5411 Rev A PWB.



2 Active Mode Efficiency – Flyback Supply

The efficiency of the 12V flyback supply is shown in the tables and graph below.



115VAC/60Hz

Iout	Vout	Vin	Iin	Pin	PF	Pout	Losses	Efficiency
0.250	12.08	115.3	0.076	3.91	0.45	3.02	0.89	77.2%
0.500	12.08	115.3	0.132	7.46	0.49	6.04	1.42	81.0%
0.750	12.08	115.2	0.188	11.14	0.52	9.06	2.08	81.3%
1.000	12.08	115.1	0.240	14.72	0.53	12.08	2.64	82.1%
1.250	12.08	114.9	0.289	18.28	0.55	15.10	3.18	82.6%
1.500	12.08	114.9	0.340	21.84	0.56	18.12	3.72	83.0%
1.749	12.08	115.1	0.389	25.36	0.57	21.13	4.23	83.3%
2.000	12.08	115.0	0.438	28.90	0.58	24.16	4.74	83.6%
2.250	12.09	114.9	0.486	32.39	0.58	27.20	5.19	84.0%
2.500	12.09	114.8	0.534	35.89	0.59	30.23	5.67	84.2%
2.750	12.09	115.1	0.581	39.40	0.59	33.25	6.15	84.4%
3.000	12.09	115.0	0.631	42.98	0.59	36.27	6.71	84.4%
3.250	12.09	115.0	0.680	46.51	0.60	39.29	7.22	84.5%
3.338	12.09	114.9	0.686	47.72	0.60	40.36	7.36	84.6%

230VAC/50Hz

Iout	Vout	Vin	Iin	Pin	PF	Pout	Losses	Efficiency
0.250	12.10	230.0	0.047	3.97	0.36	3.03	0.95	76.2%
0.500	12.09	229.9	0.080	7.50	0.41	6.05	1.46	80.6%
0.750	12.09	229.9	0.112	11.04	0.43	9.07	1.97	82.1%
1.000	12.09	229.8	0.143	14.59	0.45	12.09	2.50	82.9%
1.250	12.09	229.8	0.173	18.10	0.46	15.11	2.99	83.5%
1.500	12.09	229.8	0.201	21.59	0.47	18.14	3.46	84.0%
1.749	12.09	229.8	0.229	25.07	0.48	21.15	3.92	84.3%
2.001	12.09	229.7	0.257	28.56	0.48	24.19	4.37	84.7%
2.250	12.09	229.7	0.285	32.04	0.49	27.20	4.84	84.9%
2.500	12.09	229.6	0.312	35.52	0.50	30.23	5.30	85.1%
2.750	12.09	229.6	0.340	38.99	0.50	33.25	5.74	85.3%
3.000	12.09	229.5	0.367	42.48	0.51	36.27	6.21	85.4%
3.250	12.09	229.5	0.394	45.84	0.51	39.29	6.55	85.7%
3.338	12.09	229.5	0.404	47.09	0.51	40.36	6.73	85.7%

3 Active Mode Energy Star Compliance – Flyback Supply

The table below shows the calculations and compliance for “ENERGY STAR® Program Requirements for Single Voltage External Ac-Dc and Ac-Ac Power Supplies” version 2 based on the measured efficiency.

Name Plate Power Rating	Measured Efficiency				Avg. Eff.	Energy Star Req.	Compliant
	25% Load	50% Load	75% Load	100% Load			
30	0.81	0.83	0.83	0.84	0.83	0.83	YES
35	0.81	0.83	0.84	0.84	0.83	0.84	NO
40	0.82	0.83	0.84	0.85	0.84	0.85	NO

4 Light Load Power Consumption – Flyback Supply

The tables below show the input power and efficiency during light load operation of the 12V flyback supply. The No-Load mode requirements of “ENERGY STAR® Program Requirements for Single Voltage External Ac-Dc and Ac-Ac Power Supplies” version 2 require less than 300mW of power dissipation during no load operation.

115VAC/60Hz

Iout	Vout	Vin	Iin (mA)	Pin	PF	Pout	Losses	Efficiency
0.000	12.09	115.0	9.1	0.14	0.13	0.00	0.14	0.0%
0.050	12.08	115.0	24.7	1.06	0.37	0.60	0.46	57.0%
0.100	12.08	114.9	38.7	1.82	0.41	1.21	0.61	66.4%
0.150	12.08	114.9	50.7	2.51	0.43	1.81	0.70	72.2%
0.200	12.08	114.9	62.5	3.21	0.45	2.42	0.79	75.3%

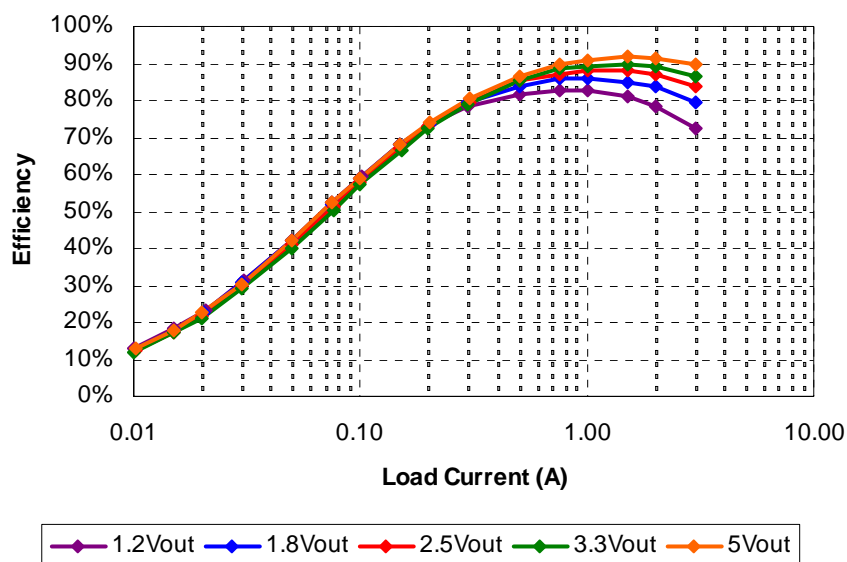
230VAC/50Hz

Iout	Vout	Vin	Iin (mA)	Pin	PF	Pout	Losses	Efficiency
0.000	12.10	230.2	14.1	0.19	0.06	0.00	0.19	0.0%
0.050	12.09	230.2	19.8	1.10	0.24	0.60	0.50	55.0%
0.100	12.09	230.1	27.7	1.94	0.30	1.21	0.73	62.3%
0.150	12.09	230.1	34.4	2.62	0.33	1.81	0.81	69.2%
0.200	12.08	230.1	41.1	3.32	0.31	2.42	0.90	72.8%

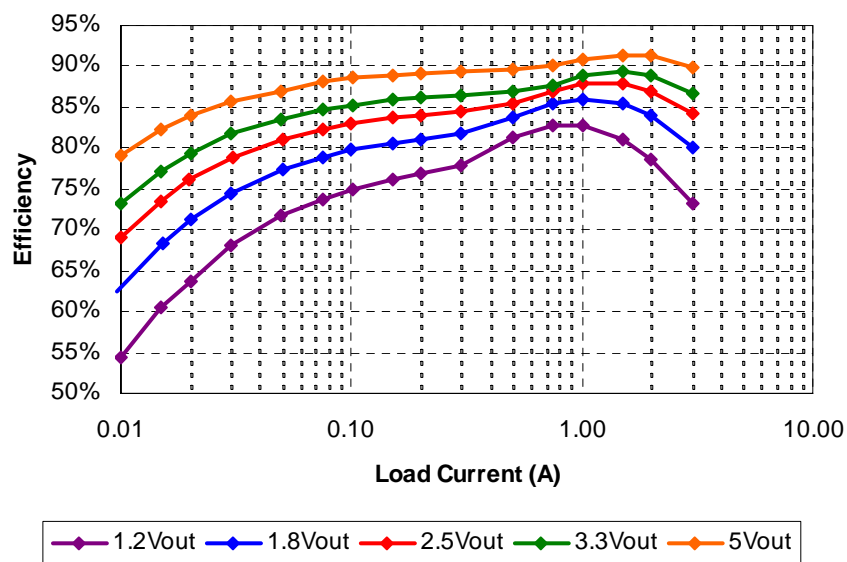
5 Efficiency – Point of Load Converters

The efficiency of the point of load converters is shown in the plots below. Efficiency was measured using the TPS54325 and TPS54326 (light load efficient).

TPS54325



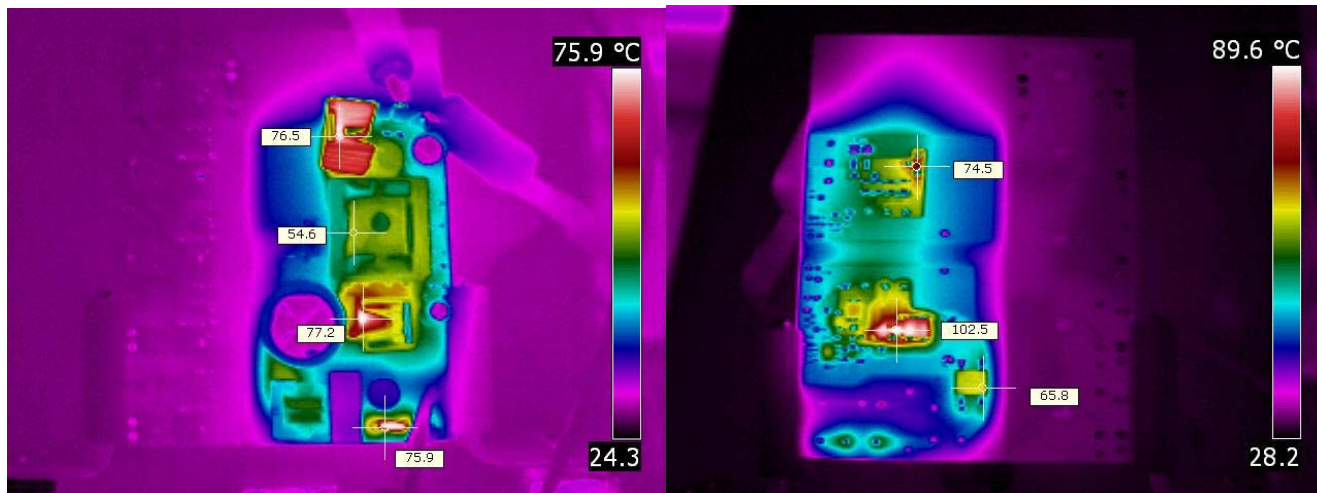
TPS54326



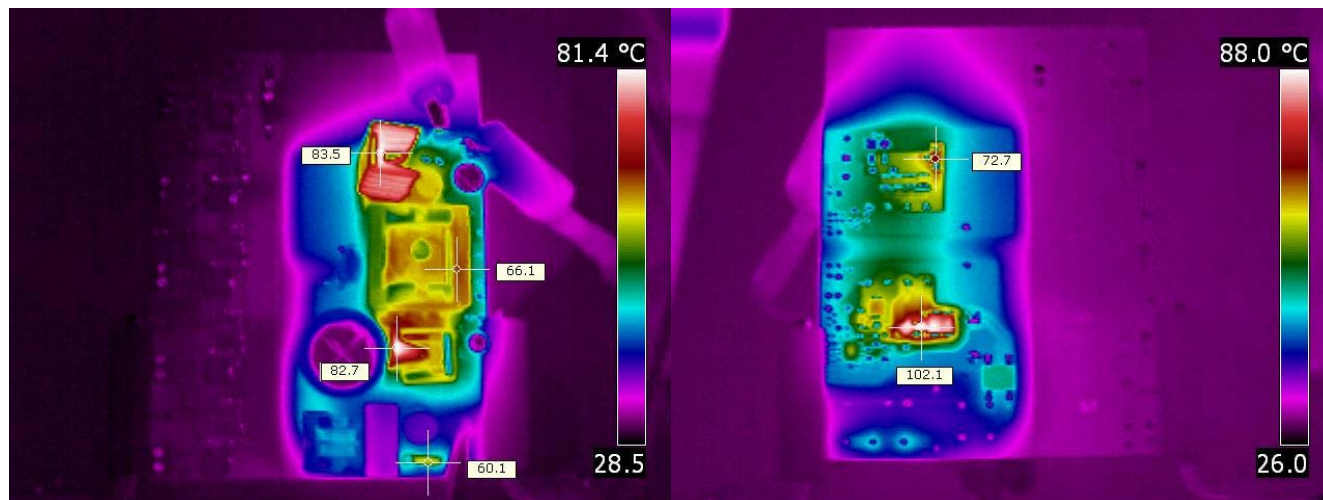
6 Thermal Images

The thermal images below show a top view (left) and bottom view (right) of the board. The ambient temperature was 26°C with no forced air flow. Only the flyback supply was loaded with 3.4A. The point of load converters were not active.

6.1 115VAC, 60Hz Input

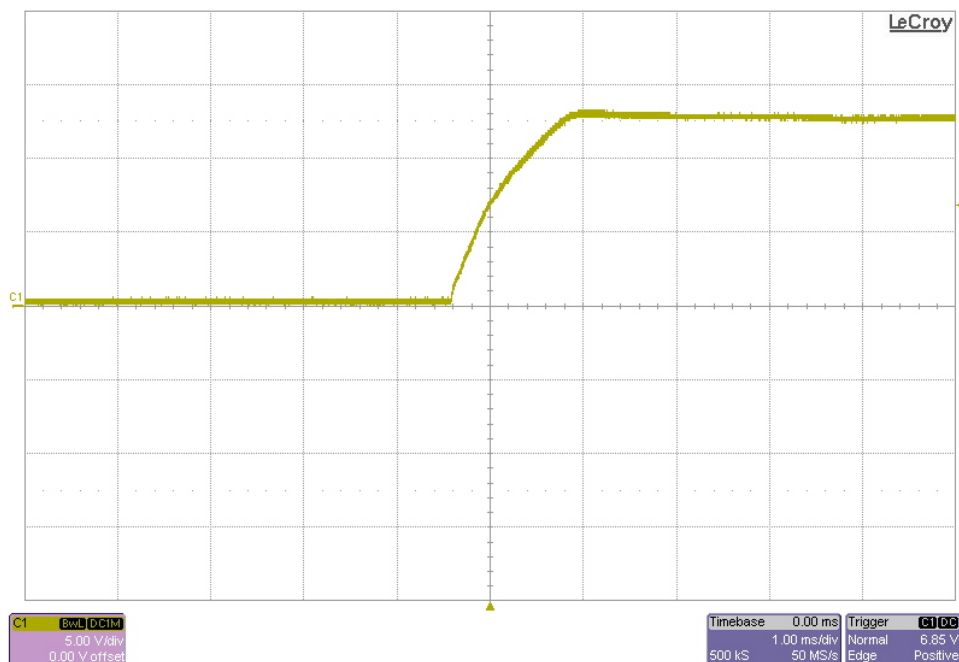
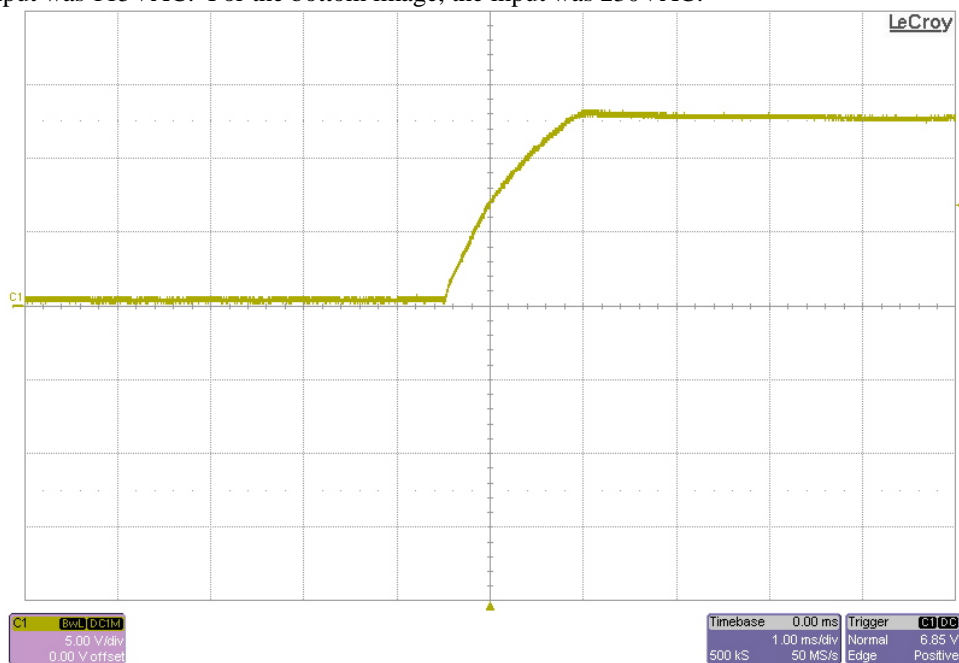


6.2 230VAC, 50Hz Input



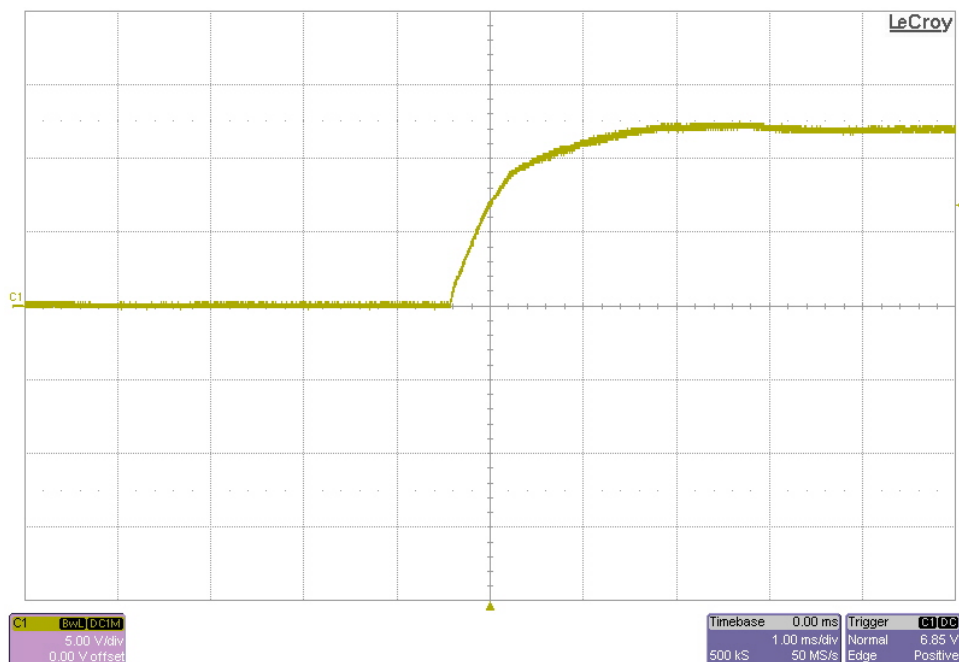
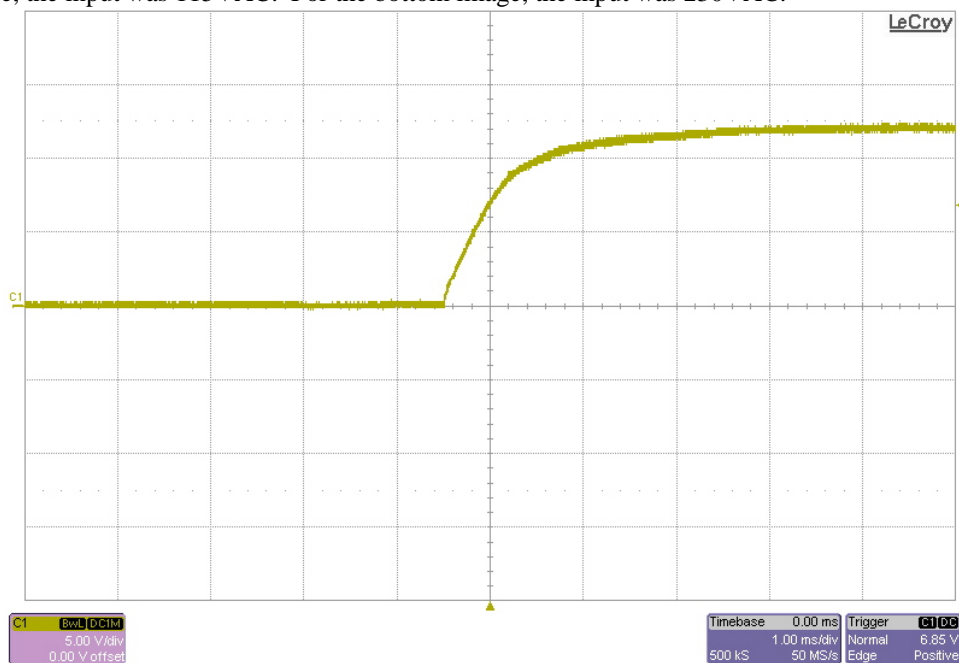
7 Startup – Flyback Supply – No Load

The output voltage of the 12V flyback supply at startup is shown in the images below. The output was unloaded. For the top image, the input was 115VAC. For the bottom image, the input was 230VAC.



8 Startup – Flyback Supply – Full Load

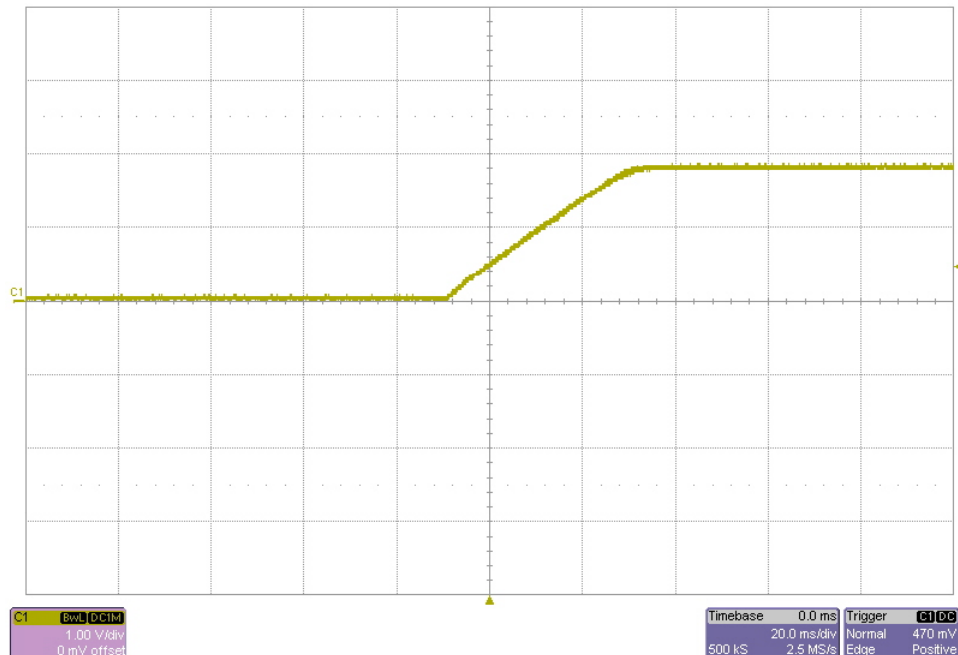
The output voltage of the 12V flyback supply at startup is shown in the images below. The output was loaded with 3.4A. For the top image, the input was 115VAC. For the bottom image, the input was 230VAC.



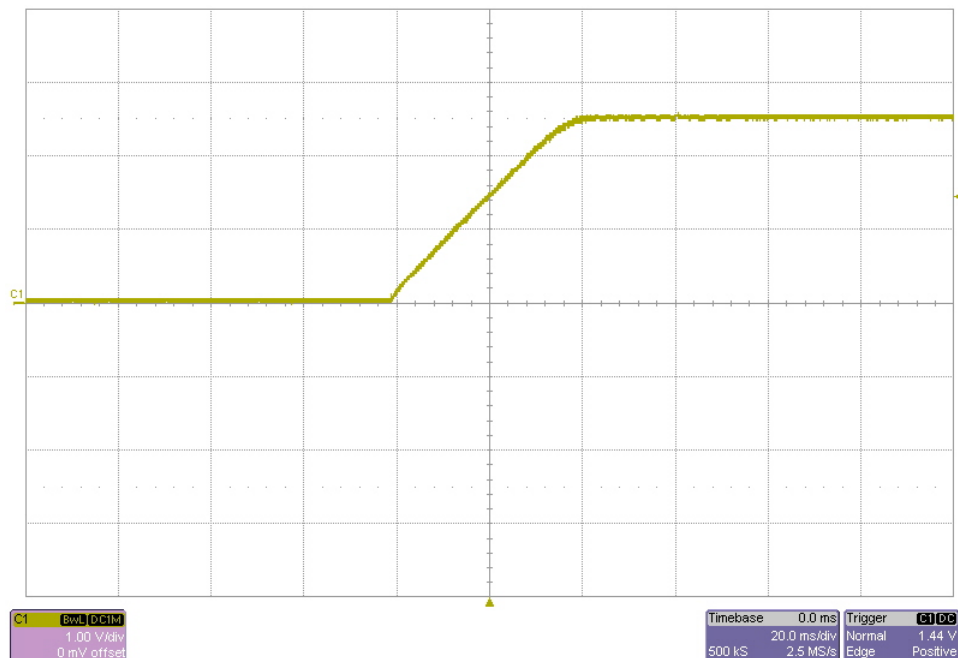
9 Startup – Point of Load Converters

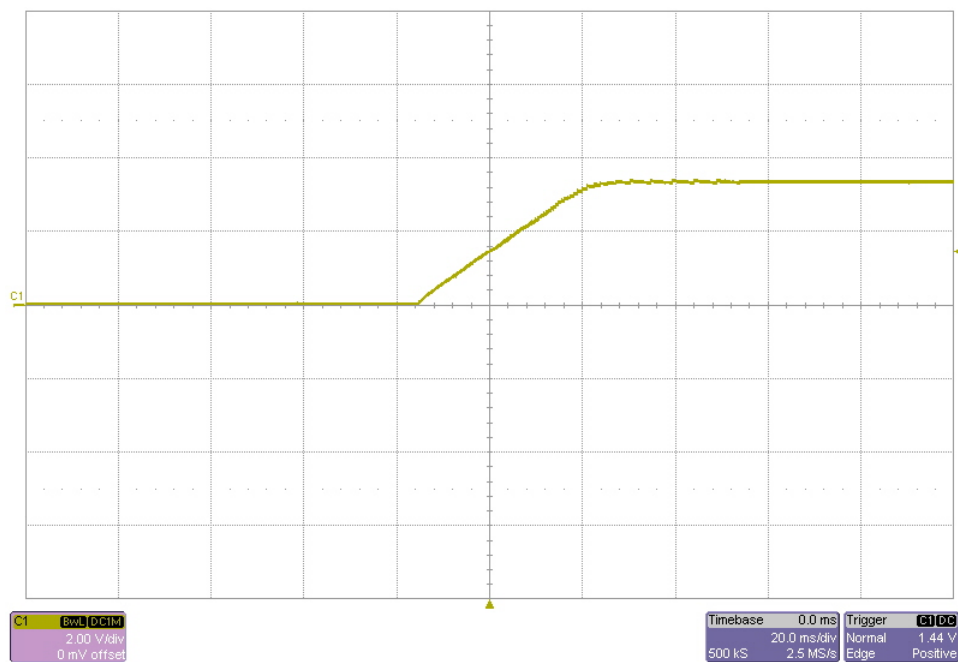
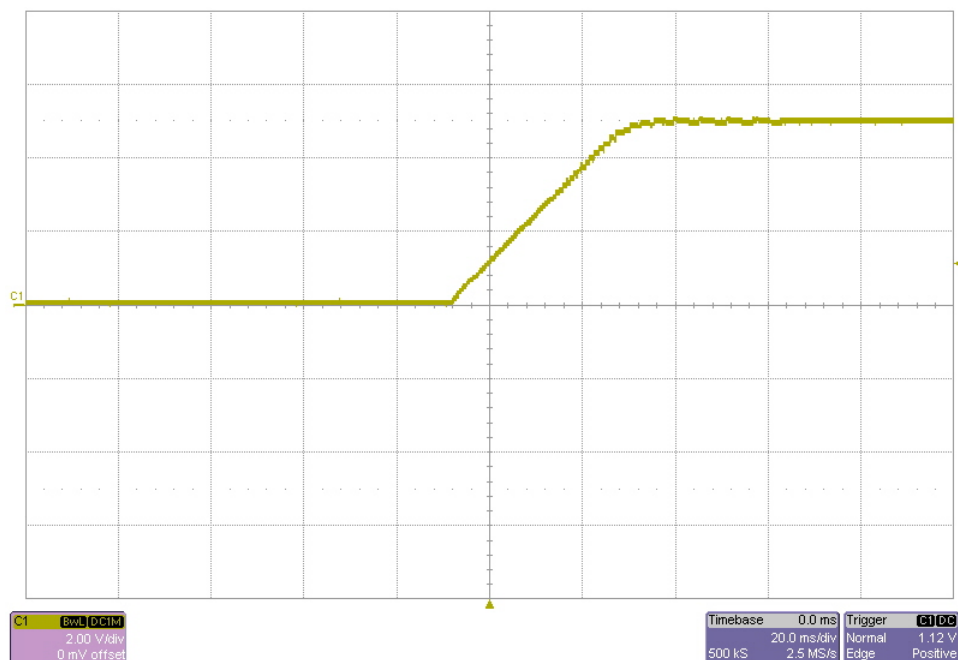
The output voltage at startup is shown in the images below. The input was 12VDC. The startup waveform is not dependent on load current.

9.1 1.8Vout



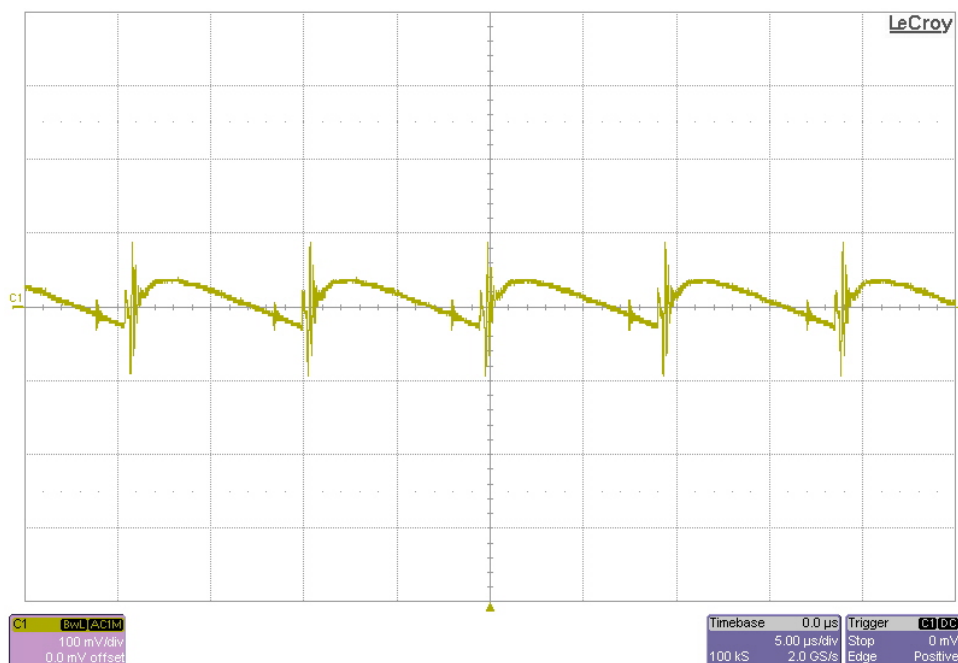
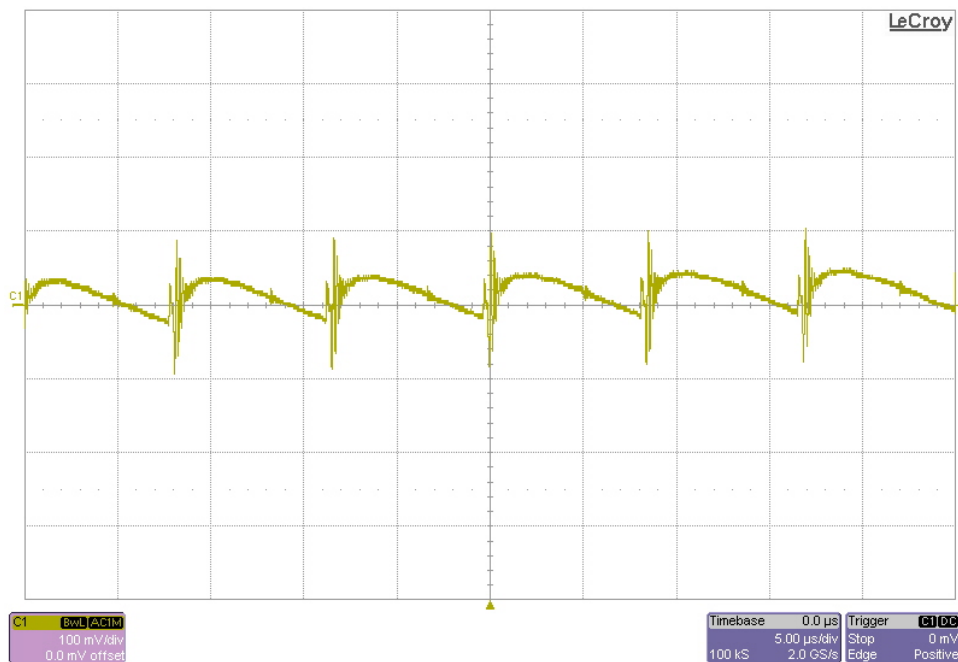
9.2 2.5Vout



9.3 3.3Vout**9.4 5Vout**

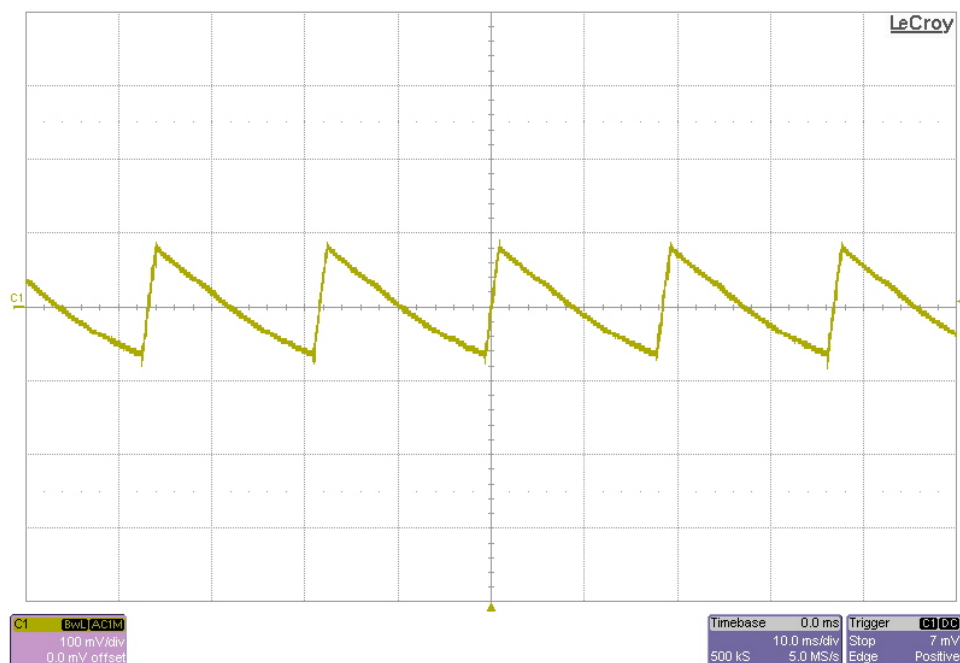
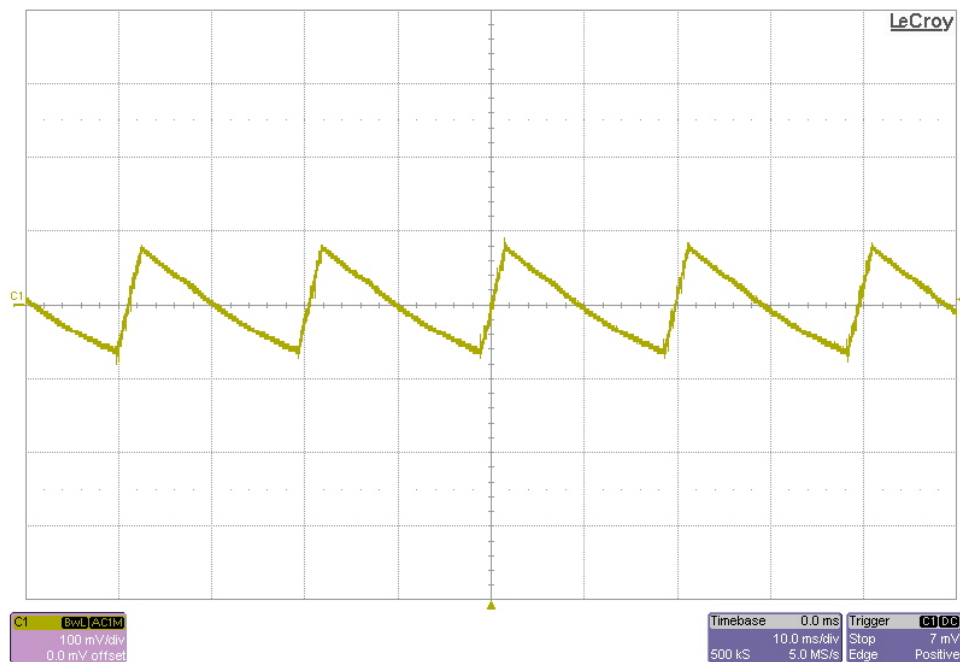
10 Output Ripple Voltage – Flyback Supply – Full Load

The output ripple voltage of the 12V flyback supply during full load (3.4A) operation is shown in the plots below. The top image shows the ripple with an 115VAC input. The bottom image shows the ripple with a 230VAC input.



11 Output Ripple Voltage – Flyback Supply – No Load

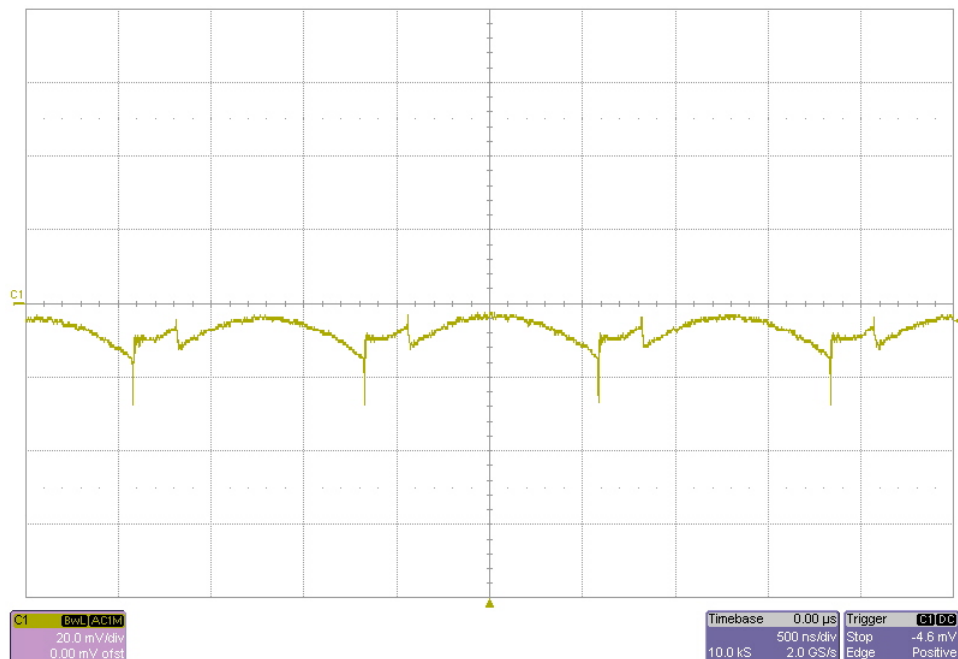
The output ripple voltage of the 12V flyback supply during no load operation is shown in the plots below. The top image shows the ripple with a 115VAC input. The bottom image shows the ripple with a 230VAC input.



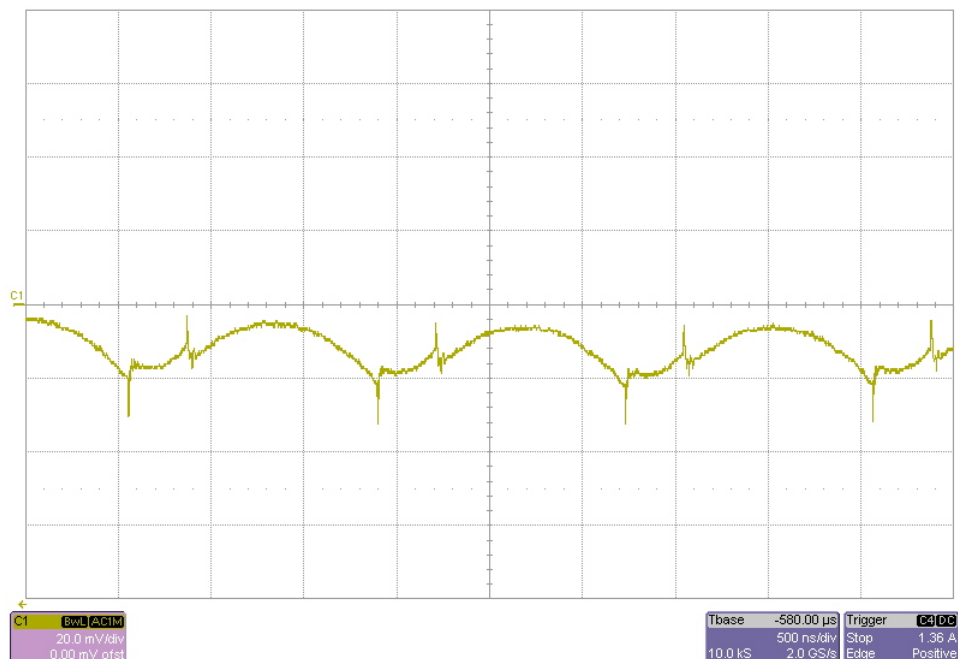
12 Output Ripple Voltage – Point of Load Converters

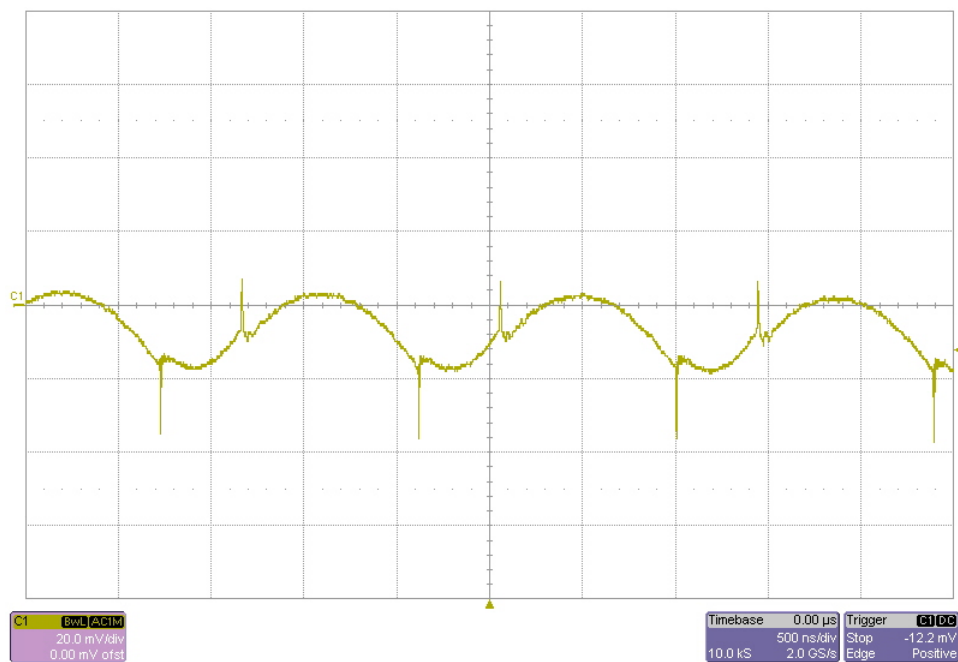
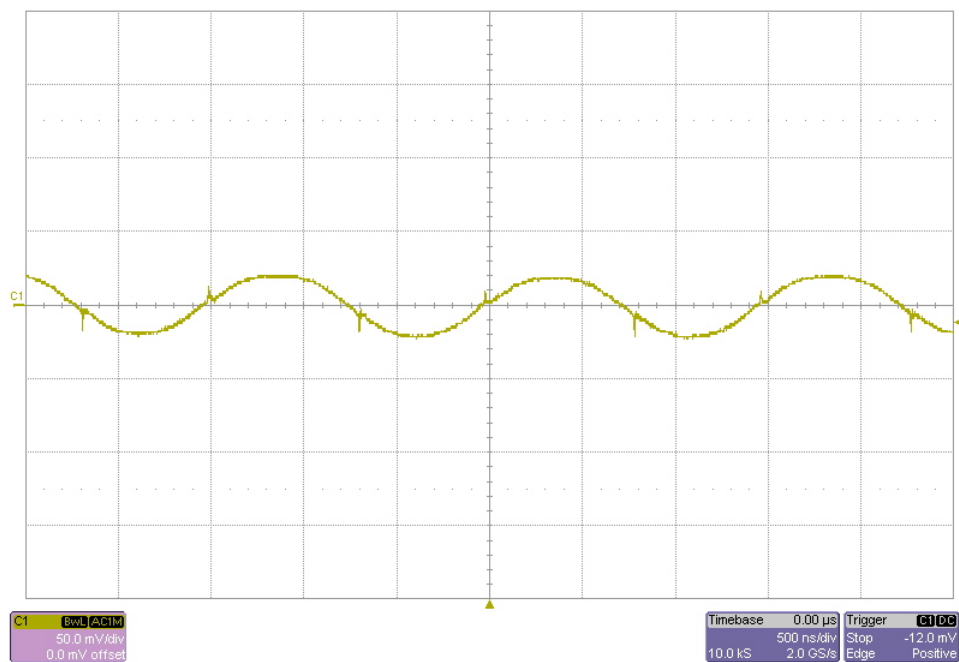
The output ripple voltage is shown in the plots below. The input voltage was 12V, and the output was loaded with 3A.

12.1 1.8Vout



12.2 2.5Vout



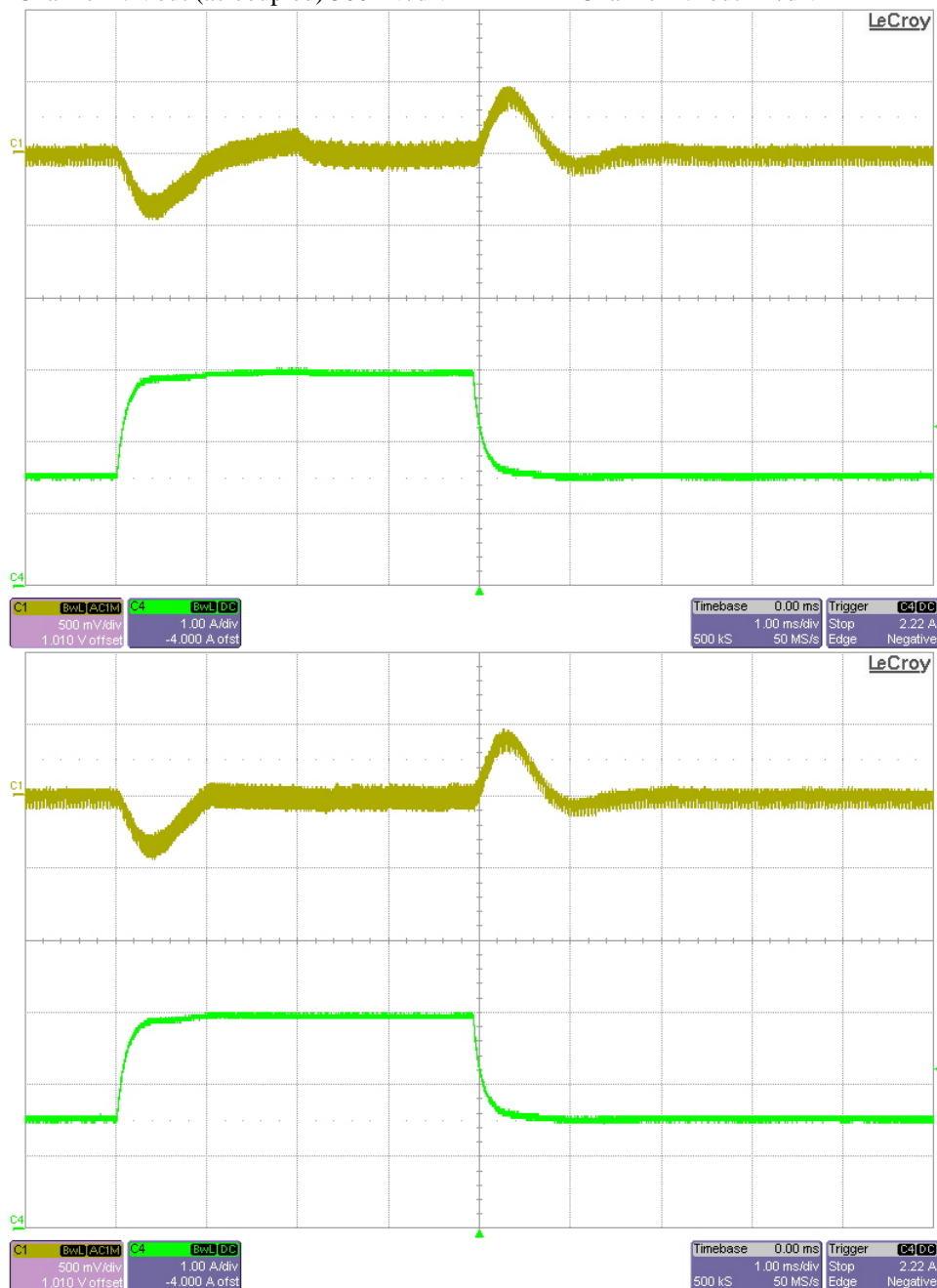
12.3 3.3Vout**12.4 5Vout**

13 Load Transients – Flyback Supply

The images below show the response to a 1.5A to 3A load transient on the 12V flyback supply. For the top image, the input voltage was set to 115VAC. For the bottom image, the input was set to 230VAC.

Channel 1: Vout (ac coupled) 500mV/div

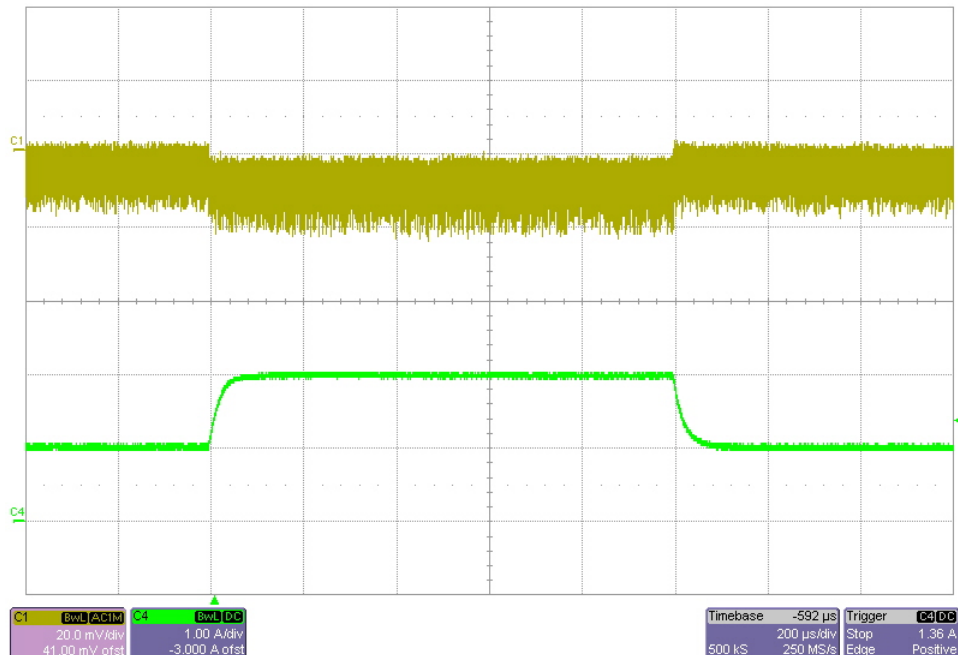
Channel 4: Iout 1A/div



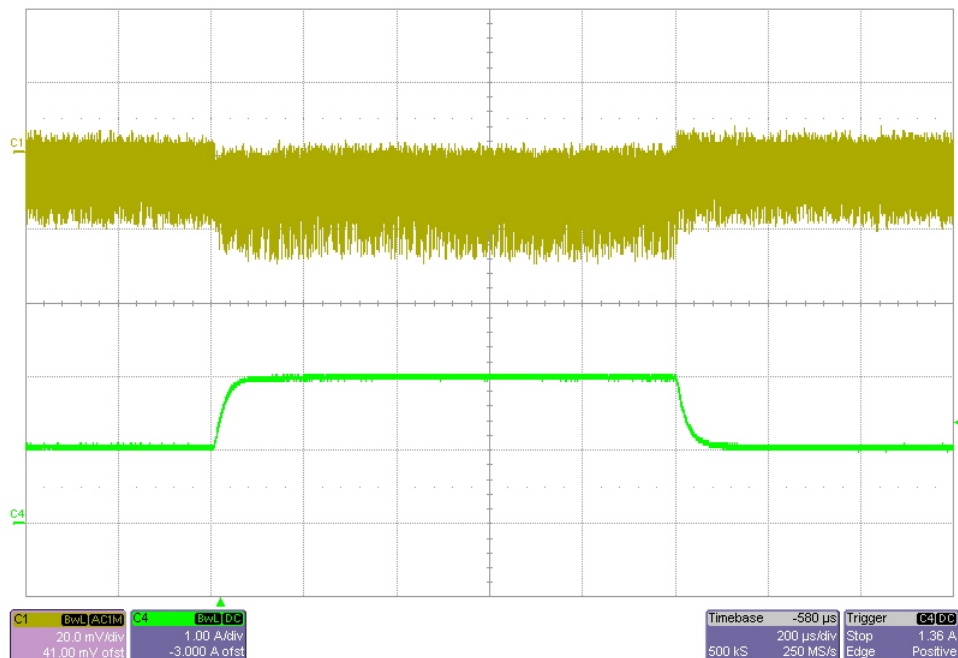
14 Load Transients – Point of Load Converters

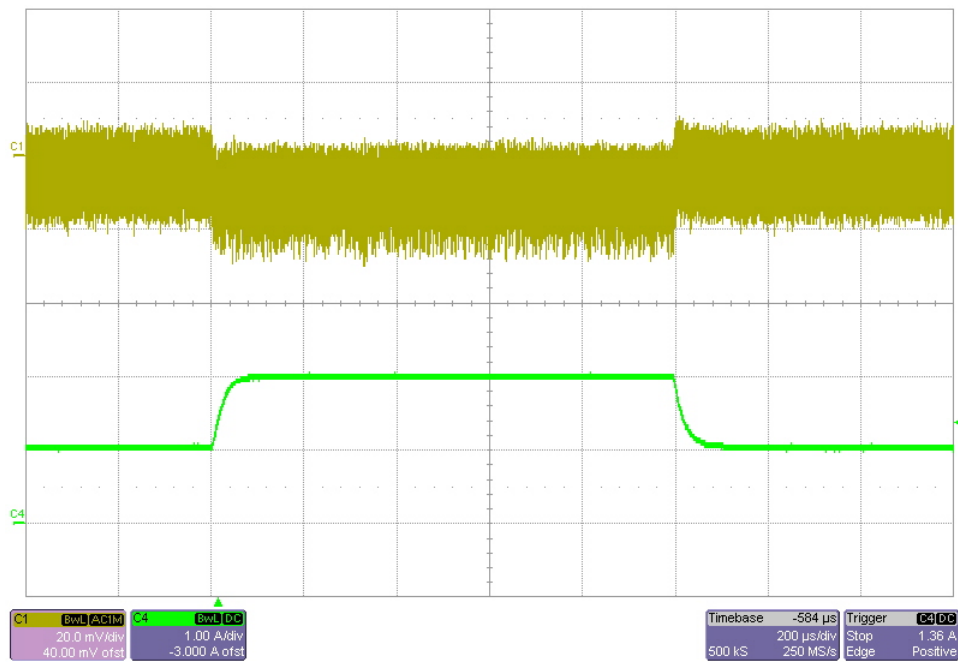
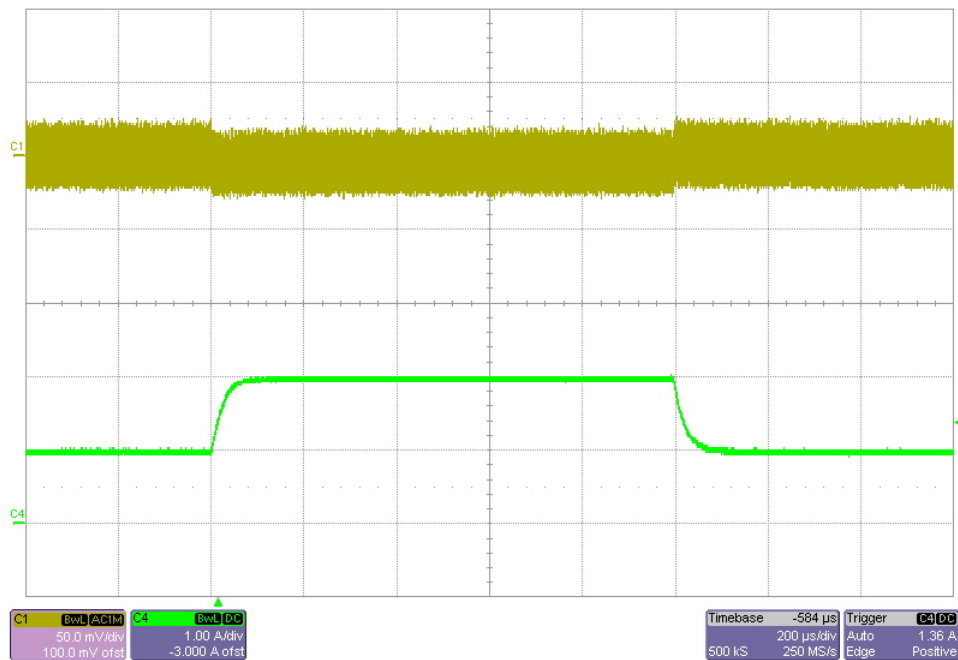
The image below shows the response to a 1A to 2A pulsed load. Channel 1 is the AC-coupled output voltage, and channel 4 is the load current. The input voltage was 12V.

14.1 1.8V_{out}



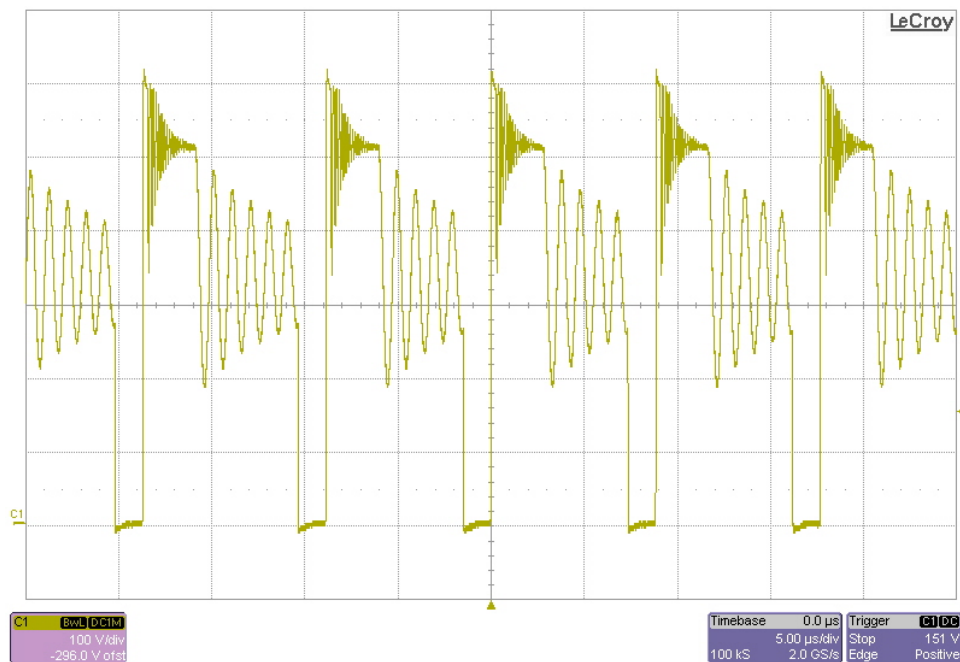
14.2 2.5V_{out}



14.3 3.3Vout**14.4 5Vout**

15 Switching Waveforms – Flyback Supply

The image below shows the drain-to-source voltage waveform on the primary MOSFET (Q1) of the 12V flyback supply. The load was 3.4A. The input was 230VAC.



IMPORTANT NOTICE

Texas Instruments Incorporated and its subsidiaries (TI) reserve the right to make corrections, modifications, enhancements, improvements, and other changes to its products and services at any time and to discontinue any product or service without notice. Customers should obtain the latest relevant information before placing orders and should verify that such information is current and complete. All products are sold subject to TI's terms and conditions of sale supplied at the time of order acknowledgment.

TI warrants performance of its hardware products to the specifications applicable at the time of sale in accordance with TI's standard warranty. Testing and other quality control techniques are used to the extent TI deems necessary to support this warranty. Except where mandated by government requirements, testing of all parameters of each product is not necessarily performed.

TI assumes no liability for applications assistance or customer product design. Customers are responsible for their products and applications using TI components. To minimize the risks associated with customer products and applications, customers should provide adequate design and operating safeguards.

TI does not warrant or represent that any license, either express or implied, is granted under any TI patent right, copyright, mask work right, or other TI intellectual property right relating to any combination, machine, or process in which TI products or services are used. Information published by TI regarding third-party products or services does not constitute a license from TI to use such products or services or a warranty or endorsement thereof. Use of such information may require a license from a third party under the patents or other intellectual property of the third party, or a license from TI under the patents or other intellectual property of TI.

Reproduction of TI information in TI data books or data sheets is permissible only if reproduction is without alteration and is accompanied by all associated warranties, conditions, limitations, and notices. Reproduction of this information with alteration is an unfair and deceptive business practice. TI is not responsible or liable for such altered documentation. Information of third parties may be subject to additional restrictions.

Resale of TI products or services with statements different from or beyond the parameters stated by TI for that product or service voids all express and any implied warranties for the associated TI product or service and is an unfair and deceptive business practice. TI is not responsible or liable for any such statements.

TI products are not authorized for use in safety-critical applications (such as life support) where a failure of the TI product would reasonably be expected to cause severe personal injury or death, unless officers of the parties have executed an agreement specifically governing such use. Buyers represent that they have all necessary expertise in the safety and regulatory ramifications of their applications, and acknowledge and agree that they are solely responsible for all legal, regulatory and safety-related requirements concerning their products and any use of TI products in such safety-critical applications, notwithstanding any applications-related information or support that may be provided by TI. Further, Buyers must fully indemnify TI and its representatives against any damages arising out of the use of TI products in such safety-critical applications.

TI products are neither designed nor intended for use in military/aerospace applications or environments unless the TI products are specifically designated by TI as military-grade or "enhanced plastic." Only products designated by TI as military-grade meet military specifications. Buyers acknowledge and agree that any such use of TI products which TI has not designated as military-grade is solely at the Buyer's risk, and that they are solely responsible for compliance with all legal and regulatory requirements in connection with such use.

TI products are neither designed nor intended for use in automotive applications or environments unless the specific TI products are designated by TI as compliant with ISO/TS 16949 requirements. Buyers acknowledge and agree that, if they use any non-designated products in automotive applications, TI will not be responsible for any failure to meet such requirements.

Following are URLs where you can obtain information on other Texas Instruments products and application solutions:

Products

Audio	www.ti.com/audio
Amplifiers	amplifier.ti.com
Data Converters	dataconverter.ti.com
DLP® Products	www.dlp.com
DSP	dsp.ti.com
Clocks and Timers	www.ti.com/clocks
Interface	interface.ti.com
Logic	logic.ti.com
Power Mgmt	power.ti.com
Microcontrollers	microcontroller.ti.com
RFID	www.ti-rfid.com
RF/IF and ZigBee® Solutions	www.ti.com/lprf

Applications

Communications and Telecom	www.ti.com/communications
Computers and Peripherals	www.ti.com/computers
Consumer Electronics	www.ti.com/consumer-apps
Energy and Lighting	www.ti.com/energy
Industrial	www.ti.com/industrial
Medical	www.ti.com/medical
Security	www.ti.com/security
Space, Avionics and Defense	www.ti.com/space-avionics-defense
Transportation and Automotive	www.ti.com/automotive
Video and Imaging	www.ti.com/video
Wireless	www.ti.com/wireless-apps

TI E2E Community Home Page

e2e.ti.com

Mailing Address: Texas Instruments, Post Office Box 655303, Dallas, Texas 75265
Copyright © 2011, Texas Instruments Incorporated