

PMP6013
TPS92310
Triac Dimmable AC-DC LED Driver Reference
Design



December, 2012

Triac Dimmable Off-Line Primary Side Sensing Controller with PFC

1 Introduction

This TPS92310 reference design presents the TPS92310 AC-DC controller in a configuration that is compatible with triac dimmers. The TPS92310 is designed to drive high-brightness light emitting diodes (LEDs) and features programmable ON time, programmable delay, and zero-current detection. Additional features include cycle-by-cycle switch current limit, VCC under-voltage lockout, and output over-voltage protection.

2 Description

This reference design provides a high-brightness LED driver based on the TPS92310 configured as a power factor corrected flyback regulator that is triac dimmable. It is designed to operate with an input voltage in the range of 90VAC to 135VAC with a 120VAC nominal input voltage. This design is set up for a default output current of 340mA with an output voltage range of 21V to 27V or approximately 6 to 8 LEDs depending on the forward voltage of each.

2.1 Typical Applications

This converter design describes an application of the TPS92310 as an LED driver with the specifications listed below. For applications with a different input voltage range or different output voltage range refer to the TPS92310 datasheet.

2.2 Features

2.2.1 Connector description

This section describes the connectors and test points on the reference design board and how to properly connect, setup, and use the TPS92310.

2.2.1.1 CN1

This connector is for the AC input to the board. Use the screw down terminals to connect Line and Neutral to the circuit. Pin 1 is marked "LINE" while pin 2 is marked "NEUTRAL". Since no earth ground is used these two are interchangeable.

2.2.1.2 LED+, LED-, CN2

Connect the LED string between these test points with the anode of one end connected to LED+ and the cathode of the other end connected to LED-. Alternatively the screw down connector CN2 may be used. Pin 1 of CN2 is LED+ and pin 2 is LED-.

3 Electrical Performance Specifications

Table 1: TPS92310 Triac Dimmable Electrical Performance Specifications

PARAMETER	TEST CONDITIONS	MIN	TYP	MAX	UNITS
Input Characteristics					
Voltage range		90	120	135	VAC
Maximum input current	At IOUT = 340mA		85		mA
Output Characteristics					
Output voltage, VOUT	At IOUT = 340mA	21		27	V
Output load current, IOUT	No Triac dimmer	323	340	357	mA
Output current regulation	At 120VAC input voltage		±5		%
Output current ripple	At IOUT = 340mA		125		mApp
Over-voltage protection level	Output rising	28	30	32	V
Systems Characteristics					
Switching frequency			48		kHz
Efficiency	Input voltage = 120VAC, Load = 7 LEDs at 24.5V		84		%
Power Factor	Input voltage = 120VAC, Load = 7 LEDs at 24.5V		0.943		
Triac Dim range	Dependent upon dimmer used	6:1		15:1	

4 Schematic

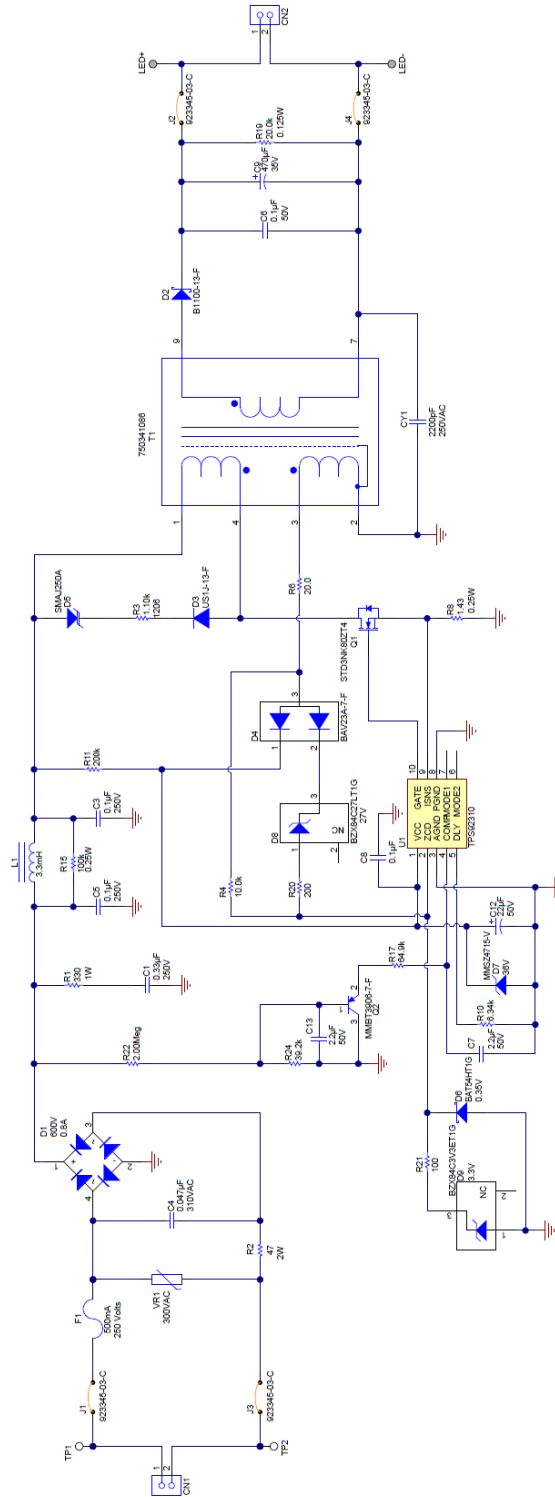


Figure 1: TPS92310 Dimmable Schematic

5 Performance Data and Typical Characteristic Curves

Figures 2 through 10 present typical performance curves for TPS92310 dimmable design.

5.1 Efficiency

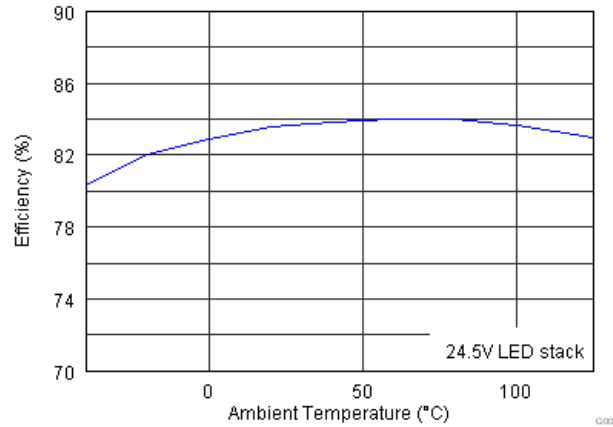


Figure 2: Efficiency

5.2 Line Regulation

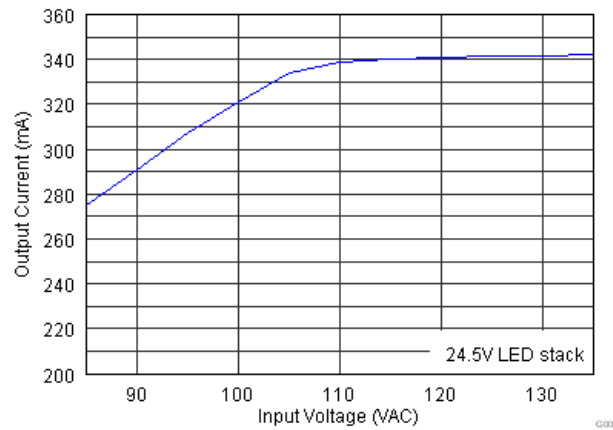


Figure 3: Line Regulation

5.3 Power Factor

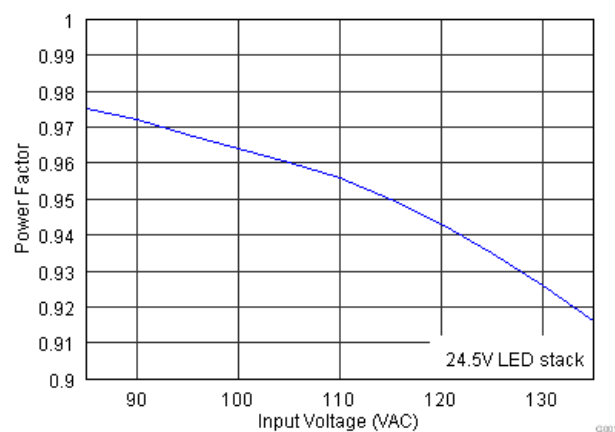


Figure 4: Power Factor

5.4 Output Current over Ambient Temperature

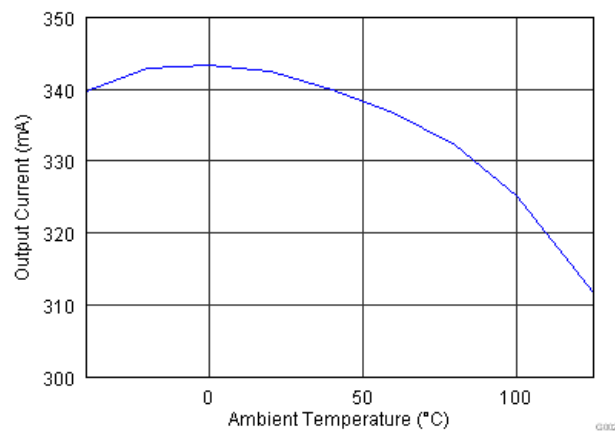


Figure 5: Output Current versus Temperature

5.5 Triac Dimmer Response

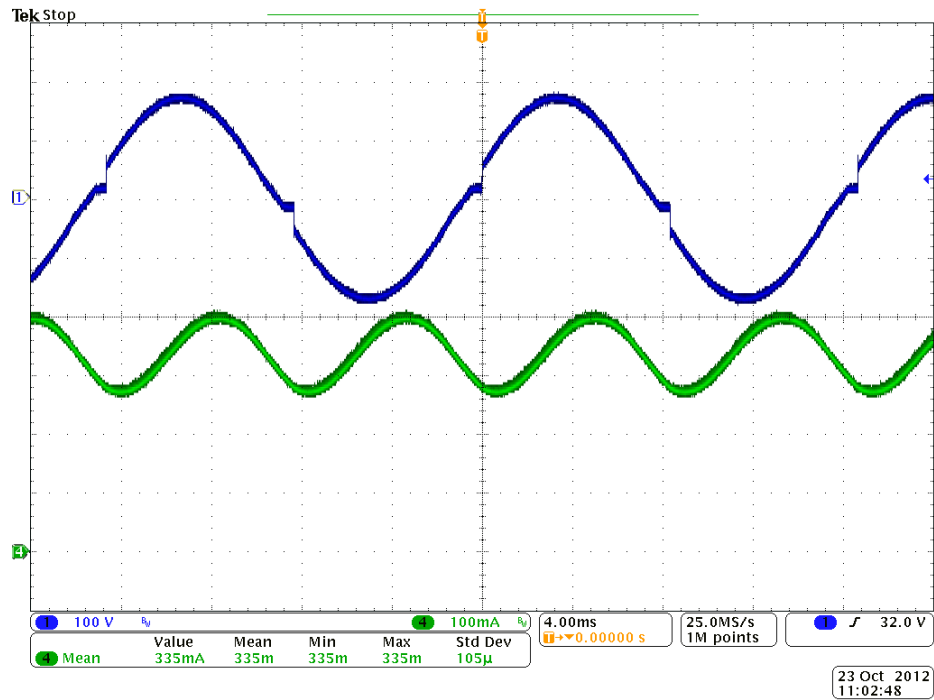


Figure 6: Triac Maximum Level Waveform

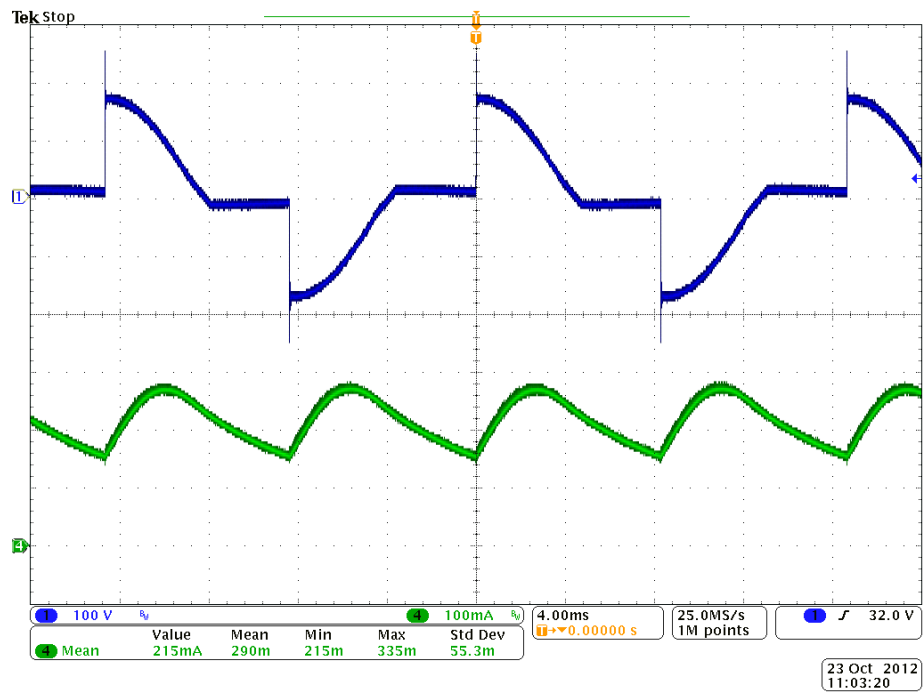


Figure 7: 90 Degree Conduction Angle Waveform

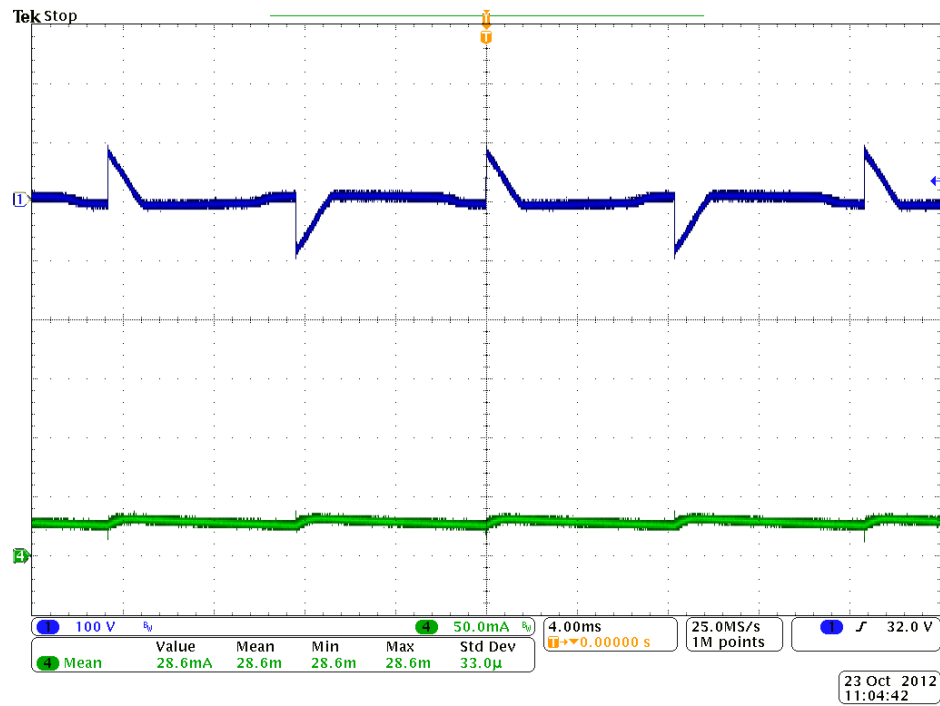
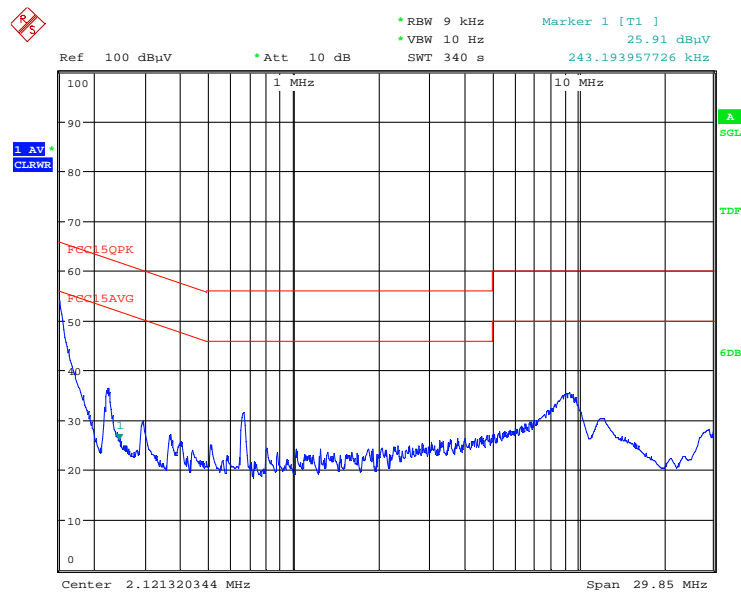
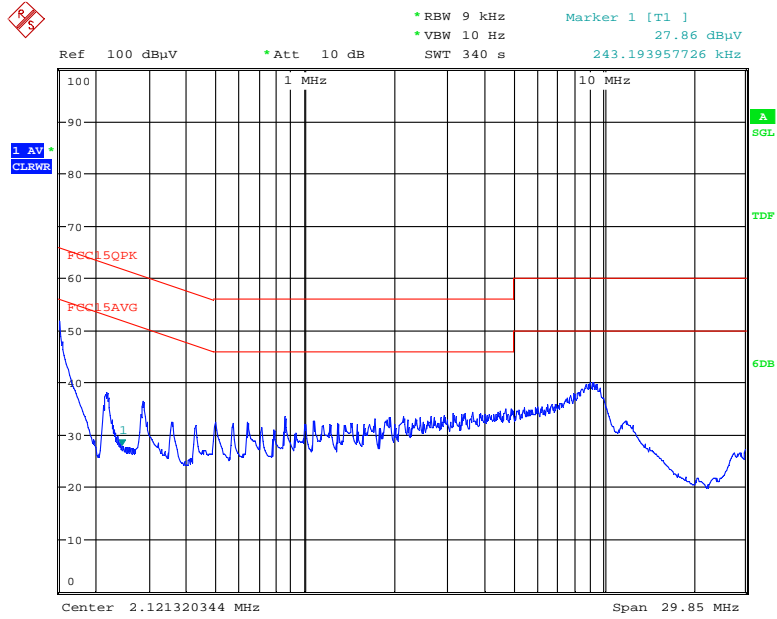


Figure 8: Triac Minimum Level Waveform



Date: 27.AUG.2012 12:21:09

Figure 9: 120VAC Line Conducted EMI Scan



Date: 27.AUG.2012 12:28:35

Figure 10: 120VAC Neutral Conducted EMI Scan

6 TPS92310 Dimmable Reference Design PCB layout

The following figures (Figure 11 through Figure 12) show the design of the TPS92310 dimmable printed circuit board.

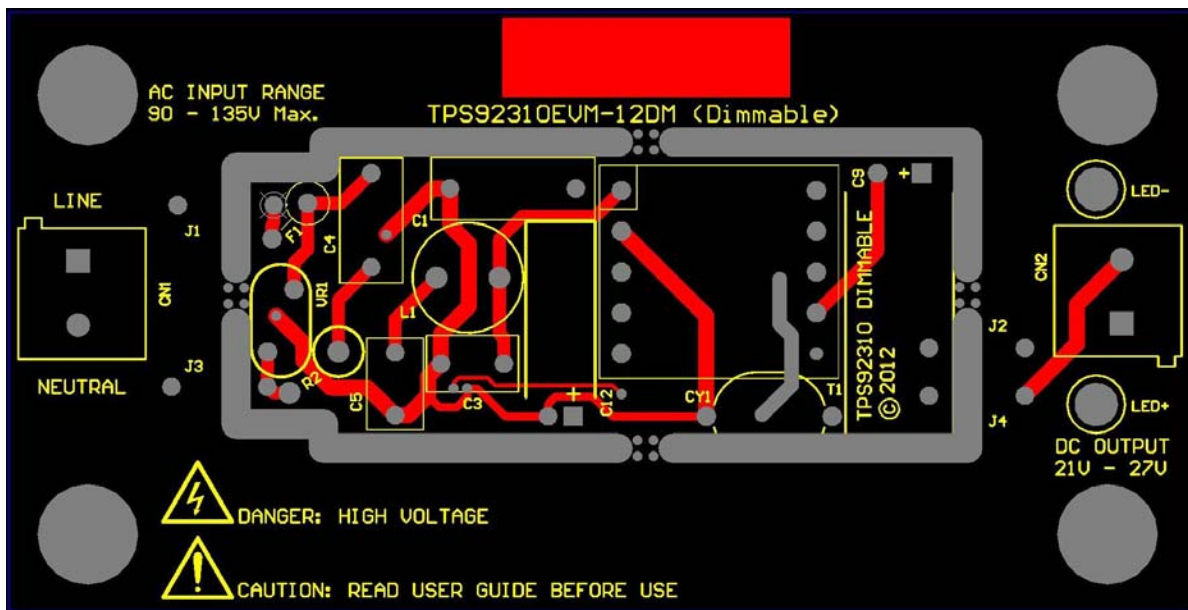


Figure 11: Top Layer and Top Overlay (Top view)

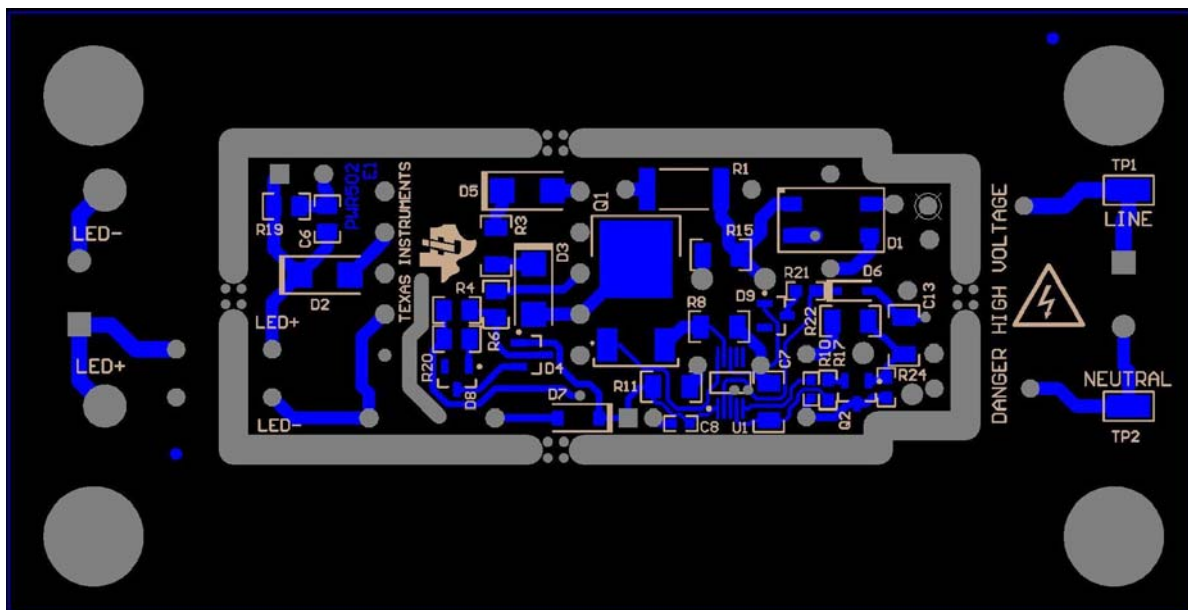


Figure 12: Bottom Layer and Bottom Overlay (Bottom view)

Table 2: The TPS92310 dimmable components list according to the schematic shown in Figure 1

REFERENCE DESIGNATOR	QTY	VALUE	DESCRIPTION	SIZE	MFR	PART NUMBER
U1	1		AC-DC Flyback LED Driver	MSOP-10	TI	TPS92310DGS
C1	1	0.33 μ F	Capacitor, Film, 250V	13mmx5mm	EPCOS	B32521C3334J
C3, C5	2	0.1 μ F	Capacitor, Film, 250V	7.3mmx4.5mm	EPCOS	B32529C3104K
C4	1	0.047 μ F	Capacitor, Film, 630V	10mmx5mm	Vishay/BC	BFC233920473
C6	1	0.1 μ F	Capacitor, Ceramic, 50V, X7R	0805	AVX	08055C104JAT2A
C7, C13	2	2.2 μ F	Capacitor, Ceramic, 50V, X7R	1206	MuRata	GRM31CR71H225KA88L
C8	1	0.1 μ F	Capacitor, Ceramic, 50V, X7R	0603	MuRata	GRM188R71H104KA93D
C9	1	470 μ F	Capacitor, Aluminum, 35V	20mmx8mm	Panasonic	EEU-FR1V471L
C12	1	22 μ F	Capacitor, Aluminum, 50V	12.5mmx5mm	Panasonic	EEU-FR1H220
CN1, CN2	2		Connector Terminal Block	5.08mm	Phoenix Contact	1715721
CY1	1	2200 pF	Capacitor, Ceramic, 250V, X1Y1	9mmx12mm	MuRata	DE1E3KX222MA4BL01
D1	1		Diode, Switching Bridge, 600V, 0.8A	4-MiniDIP	Diodes Inc.	HD06-T
D2	1		Diode, Schottky, 100V, 1A	SMA	Diodes Inc.	B1100-13-F
D3	1		Diode, Ultrafast, 600V, 1A	SMA	Diodes Inc.	US1J-13-F
D4	1		Diode, Switch, 200V, 0.4A	SOT-23	Diodes Inc.	BAV23A-7-F
D5	1		Diode, TVS, 250V, 400W	SMA	Littlefuse	SMAJ250A
D6	1		Diode, Schottky, 30V, 0.2A	SOD-323	ON Semi	BAT54HT1G
D7	1		Diode, Zener, 36V, 500mW	SOD-123	Vishay	MMSZ4715-V
D8	1		Diode, Zener, 27V, 225mW	SOT-23	ON Semi	BZX84C27LT1G
D9	1		Diode, Zener, 3.3V, 225mW	SOT-23	ON Semi	BZX84C3V3ET1G
F1	1		Fuse, 0.5A, 250V	3.9mmx11mm	Littlefuse	0677.500MXEP
J1, J2, J3, J4	4		Jumper Wire, 300mil spacing	300mil	3M	923345-03-C
L1	1	3300 μ H	Inductor, 0.14A	8mmx8mm	TDK Corp.	TSL0808RA-332KR14-PF
LED+, LED-	2		Test Turret, Double		Keystone	1502-2
Q1	1		MOSFET, N-channel, 800V, 2.5A	DPAK	ST Micro	STD3NK80ZT4
Q2	1		Transistor, PNP, 40V, 0.2A	SOT-23	Diodes Inc.	MMBT3906-7-F
R1	1	330 Ω	Resistor, Chip, 1W, 5%	2512	Dale	CRCW2512330RJNEG
R2	1	47 Ω	Resistor, Axial, 2W, 10%	4mmx10mm	Welwyn	EMC2-47RKI
R3	1	1.1 k Ω	Resistor, Chip, 1/4W, 1%	1206	Std	
R4	1	10 k Ω	Resistor, Chip, 1/8W, 1%	0805	Std	
R6	1	20 Ω	Resistor, Chip, 1/8W, 1%	0805	Std	
R8	1	1.43 Ω	Resistor, Chip, 1/4W, 1%	1206	Yageo	RC1206FR-071R43L
R10	1	6.34 k Ω	Resistor, Chip, 1/10W, 1%	0603	Std	
R11	1	200 k Ω	Resistor, Chip, 1/4W, 1%	1206	Std	
R15	1	100 k Ω	Resistor, Chip, 1/4W, 1%	1206	Std	
R17	1	64.9 k Ω	Resistor, Chip, 1/10W, 1%	0603	Std	
R19	1	20 k Ω	Resistor, Chip, 1/8W, 1%	0805	Std	
R20	1	200 Ω	Resistor, Chip, 1/8W, 1%	0805	Std	

R21	1	100 Ω	Resistor, Chip, 1/10W, 1%	0603	Std	
R22	1	2 M Ω	Resistor, Chip, 1/4W, 1%	1206	Std	
R24	1	39.2 k Ω	Resistor, Chip, 1/10W, 1%	0603	Std	
T1	1		Transformer	EE-16	Würth	750341086
TP1, TP2	0	DNP	Test Point, SMT		Keystone	5015
VR1	1		Varistor, 300VAC, 385VDC, 30J	7mm Radial	EPCOS	S07K300E2

EVALUATION BOARD/KIT/MODULE (REF DESIGN) WARNINGS, RESTRICTIONS AND DISCLAIMER

For Feasibility Evaluation Only, in Laboratory/Development Environments. The REF DESIGN is not a complete product. It is intended solely for use for preliminary feasibility evaluation in laboratory / development environments by technically qualified electronics experts who are familiar with the dangers and application risks associated with handling electrical / mechanical components, systems and subsystems. It should not be used as all or part of a production unit.

Your Sole Responsibility and Risk. You acknowledge, represent and agree that:

1. You have unique knowledge concerning Federal, State and local regulatory requirements (including but not limited to Food and Drug Administration regulations, if applicable) which relate to your products and which relate to your use (and/or that of your employees, affiliates, contractors or designees) of the REF DESIGN for evaluation, testing and other purposes.
2. You have full and exclusive responsibility to assure the safety and compliance of your products with all such laws and other applicable regulatory requirements, and also to assure the safety of any activities to be conducted by you and/or your employees, affiliates, contractors or designees, using the REF DESIGN. Further, you are responsible to assure that any interfaces (electronic and/or mechanical) between the REF DESIGN and any human body are designed with suitable isolation and means to safely limit accessible leakage currents to minimize the risk of electrical shock hazard.
3. Since the REF DESIGN is not a completed product, it may not meet all applicable regulatory and safety compliance standards (such as UL, CSA, VDE, CE, RoHS and WEEE) which may normally be associated with similar items. You assume full responsibility to determine and/or assure compliance with any such standards and related certifications as may be applicable. You will employ reasonable safeguards to ensure that your use of the REF DESIGN will not result in any property damage, injury or death, even if the REF DESIGN should fail to perform as described or expected.

Certain Instructions. Exceeding the specified REF DESIGN ratings (including but not limited to input and output voltage, current, power, and environmental ranges) may cause property damage, personal injury or death. If there are questions concerning these ratings please contact a TI field representative prior to connecting interface electronics including input power and intended loads. Any loads applied outside of the specified output range may result in unintended and/or inaccurate operation and/or possible permanent damage to the REF DESIGN and/or interface electronics. Please consult the REF DESIGN User's Guide prior to connecting any load to the REF DESIGN output. If there is uncertainty as to the load specification, please contact a TI field representative. During normal operation, some circuit components may have case temperatures greater than 60°C as long as the input and output ranges are maintained at nominal ambient operating temperature. These components include but are not limited to linear regulators, switching transistors, pass transistors, and current sense resistors which can be identified using the REF DESIGN schematic located in the REF DESIGN User's Guide. When placing measurement probes near these devices during normal operation, please be aware that these devices may be very warm to the touch.

Agreement to Defend, Indemnify and Hold Harmless. You agree to defend, indemnify and hold TI, its licensors and their representatives harmless from and against any and all claims, damages, losses, expenses, costs and liabilities (collectively, "Claims") arising out of or in connection with any use of the REF DESIGN that is not in accordance with the terms of this agreement. This obligation shall apply whether Claims arise under the law of tort or contract or any other legal theory, and even if the REF DESIGN fails to perform as described or expected.

Safety-Critical or Life-Critical Applications. If you intend to evaluate TI components for possible use in safety-critical applications (such as life support) where a failure of the TI product would reasonably be expected to cause severe personal injury or death, such as devices which are classified as FDA Class III or similar classification, then you must specifically notify TI of such intent and enter into a separate Assurance and Indemnity Agreement.

IMPORTANT NOTICE

Texas Instruments Incorporated and its subsidiaries (TI) reserve the right to make corrections, modifications, enhancements, improvements, and other changes to its products and services at any time and to discontinue any product or service without notice. Customers should obtain the latest relevant information before placing orders and should verify that such information is current and complete. All products are sold subject to TI's terms and conditions of sale supplied at the time of order acknowledgment.

TI warrants performance of its hardware products to the specifications applicable at the time of sale in accordance with TI's standard warranty. Testing and other quality control techniques are used to the extent TI deems necessary to support this warranty. Except where mandated by government requirements, testing of all parameters of each product is not necessarily performed.

TI assumes no liability for applications assistance or customer product design. Customers are responsible for their products and applications using TI components. To minimize the risks associated with customer products and applications, customers should provide adequate design and operating safeguards.

TI does not warrant or represent that any license, either express or implied, is granted under any TI patent right, copyright, mask work right, or other TI intellectual property right relating to any combination, machine, or process in which TI products or services are used. Information published by TI regarding third-party products or services does not constitute a license from TI to use such products or services or a warranty or endorsement thereof. Use of such information may require a license from a third party under the patents or other intellectual property of the third party, or a license from TI under the patents or other intellectual property of TI.

Reproduction of TI information in TI data books or data sheets is permissible only if reproduction is without alteration and is accompanied by all associated warranties, conditions, limitations, and notices. Reproduction of this information with alteration is an unfair and deceptive business practice. TI is not responsible or liable for such altered documentation. Information of third parties may be subject to additional restrictions.

Resale of TI products or services with statements different from or beyond the parameters stated by TI for that product or service voids all express and any implied warranties for the associated TI product or service and is an unfair and deceptive business practice. TI is not responsible or liable for any such statements.

TI products are not authorized for use in safety-critical applications (such as life support) where a failure of the TI product would reasonably be expected to cause severe personal injury or death, unless officers of the parties have executed an agreement specifically governing such use. Buyers represent that they have all necessary expertise in the safety and regulatory ramifications of their applications, and acknowledge and agree that they are solely responsible for all legal, regulatory and safety-related requirements concerning their products and any use of TI products in such safety-critical applications, notwithstanding any applications-related information or support that may be provided by TI. Further, Buyers must fully indemnify TI and its representatives against any damages arising out of the use of TI products in such safety-critical applications.

TI products are neither designed nor intended for use in military/aerospace applications or environments unless the TI products are specifically designated by TI as military-grade or "enhanced plastic." Only products designated by TI as military-grade meet military specifications. Buyers acknowledge and agree that any such use of TI products which TI has not designated as military-grade is solely at the Buyer's risk, and that they are solely responsible for compliance with all legal and regulatory requirements in connection with such use.

TI products are neither designed nor intended for use in automotive applications or environments unless the specific TI products are designated by TI as compliant with ISO/TS 16949 requirements. Buyers acknowledge and agree that, if they use any non-designated products in automotive applications, TI will not be responsible for any failure to meet such requirements.

Following are URLs where you can obtain information on other Texas Instruments products and application solutions:

Products

Amplifiers	amplifier.ti.com
Data Converters	dataconverter.ti.com
DSP	dsp.ti.com
Clocks and Timers	www.ti.com/clocks
Interface	interface.ti.com
Logic	logic.ti.com
Power Mgmt	power.ti.com
Microcontrollers	microcontroller.ti.com
RFID	www.ti-rfid.com
RF/IF and ZigBee® Solutions	www.ti.com/lprf

Applications

Audio	www.ti.com/audio
Automotive	www.ti.com/automotive
Broadband	www.ti.com/broadband
Digital Control	www.ti.com/digitalcontrol
Medical	www.ti.com/medical
Military	www.ti.com/military
Optical Networking	www.ti.com/opticalnetwork
Security	www.ti.com/security
Telephony	www.ti.com/telephony
Video & Imaging	www.ti.com/video
Wireless	www.ti.com/wireless

Mailing Address: Texas Instruments, Post Office Box 655303, Dallas, Texas 75265
Copyright © 2008, Texas Instruments Incorporated