

Versatile Sample & Hold Circuit for Industrial and T&M applications

(ACTIVE) TIDA-00003 ★★★★☆ No reviews yet. [Add your review and give us feedback](#)

- Description & Features
- Technical Documents
- Support & Community
- Order Now

View the [Important Notice for TI Designs](#) covering authorized use, intellectual property matters and disclaimers.

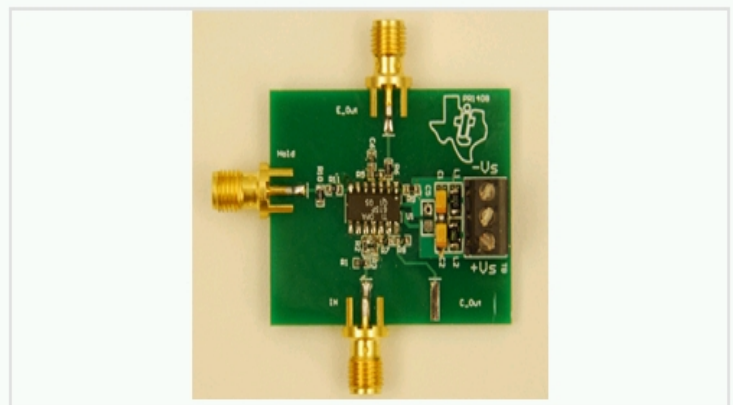
Description

Using the OPA615 high bandwidth, DC restoration circuit, this reference design provides a high bandwidth, high precision sample & hold circuit for various applications. Supported by a full scale design guide, the circuit can be easily adjusted for a given application.

Features

- Up to 320MHz bandwidth
- +/-5V supply voltage, comparator output voltage swing +/-3.5V, approx. 14mA max. Iq
- Droop rate as low as 0.17mV/μs for a 100pF hold capacitor
- Only 40fC charge injection
- 100dB Sample and Hold feedthrough rejection
- This reference design has been lab tested and is supported with design files and a comprehensive design guide

TI's [Standard Terms and Conditions for Evaluation Modules](#) apply.

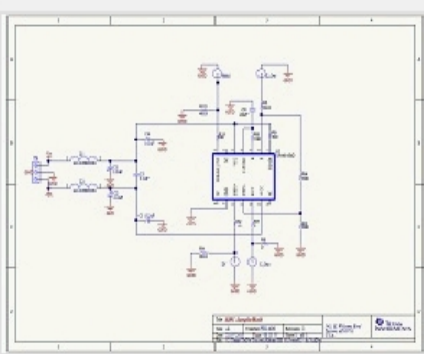


OPA615 Reference Design Top View

Fully assembled board (shown above) developed for testing and performance validation only, not available for sale.

Schematic/Block Diagram

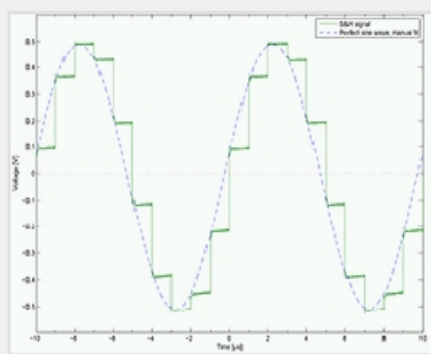
Quickly understand overall system functionality.



Download Schematic

Test Data

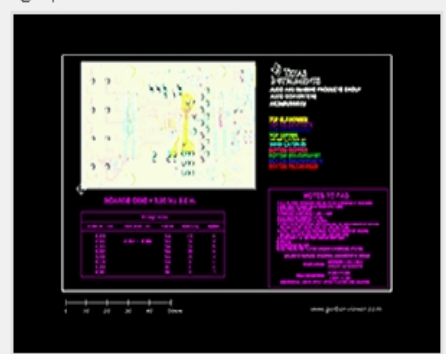
Get results faster with test and simulation data that's been verified.



Download Test Data

Design Files

Download ready-to-use system files to speed your design process. [Get Viewer.](#)



Download Design Files

Bill of Materials (BOM)

Find the complete list of components in this reference design.

Download BOM

TI Devices (1)

Order samples, get tools and find more information on the TI products in this reference design.

Part Number	Name	Product Family	Sample & Buy	Design Kits & Evaluation Modules
OPA615	Wide Bandwidth, DC Restoration Circuit	Special Function Amplifier	Sample & Buy	View Design Kits & Evaluation Modules

CAD/CAE symbols

Part #	Package Pins	CAD File (.bxl)	STEP Model (.stp)
OPA615	VSSOP (DGS) 10	Download	Download
	SOIC (D) 14	Download	Download

Texas Instruments and Accelerated Designs Inc. have collaborated together to provide TI customers with schematic symbols and PCB layout footprints for TI products.

Step 1: Download and install the Ultra Librarian software [ZIP: 62MB](#)

Step 2: Download the Symbol and Footprint .bxl file.

[- read more -](#)

Technical Documents

User Guides (2)

Title	Abstract	Type	Size (KB)	Date	Views
TIDA-00003 Design Guide (Rev. A)		PDF	1494	22 Oct 2013	243
TIDA-00003 Test Results		ZIP	98	17 Sep 2013	60

Design Files (3)

Title	Abstract	Type	Size (KB)	Date	Views
TIDA-00003 Gerber		ZIP	29	17 Sep 2013	110
TIDA-00003 BOM		PDF	100	17 Sep 2013	58
TIDA-00003 Schematic		PDF	84	17 Sep 2013	267

Support & Community

TI E2E™ community

As a member of [my.TI](#) you can join the **TI E2E™ Community** where you can ask questions, share ideas and collaborate with fellow engineers and TI experts

Contents are provided "AS IS" by the respective TI and Community contributors and do not constitute TI specifications. See [Terms of use](#).

Engage in the Community

- Amplifiers
- Broadband RF/IF & Digital Radio
- Clocks & Timers
- Data Converters
- DLP® & MEMS
- Interface
- Logic
- Power Management
- Wireless Connectivity

Wikis

[Visit the TI Wiki](#)

Other Support

- [TI E2E Community](#)
- [Contact Technical Support](#)

Customer Reviews ^{BETA}

★★★★☆ No reviews yet. [Add your review and give us feedback](#)

Your History

Products You Recently Viewed

- [afe5808aevm](#)
- [afe5801evm](#)
- [TIPD105](#)
- [ads8332evm](#)
- [dem-dai1808](#)