

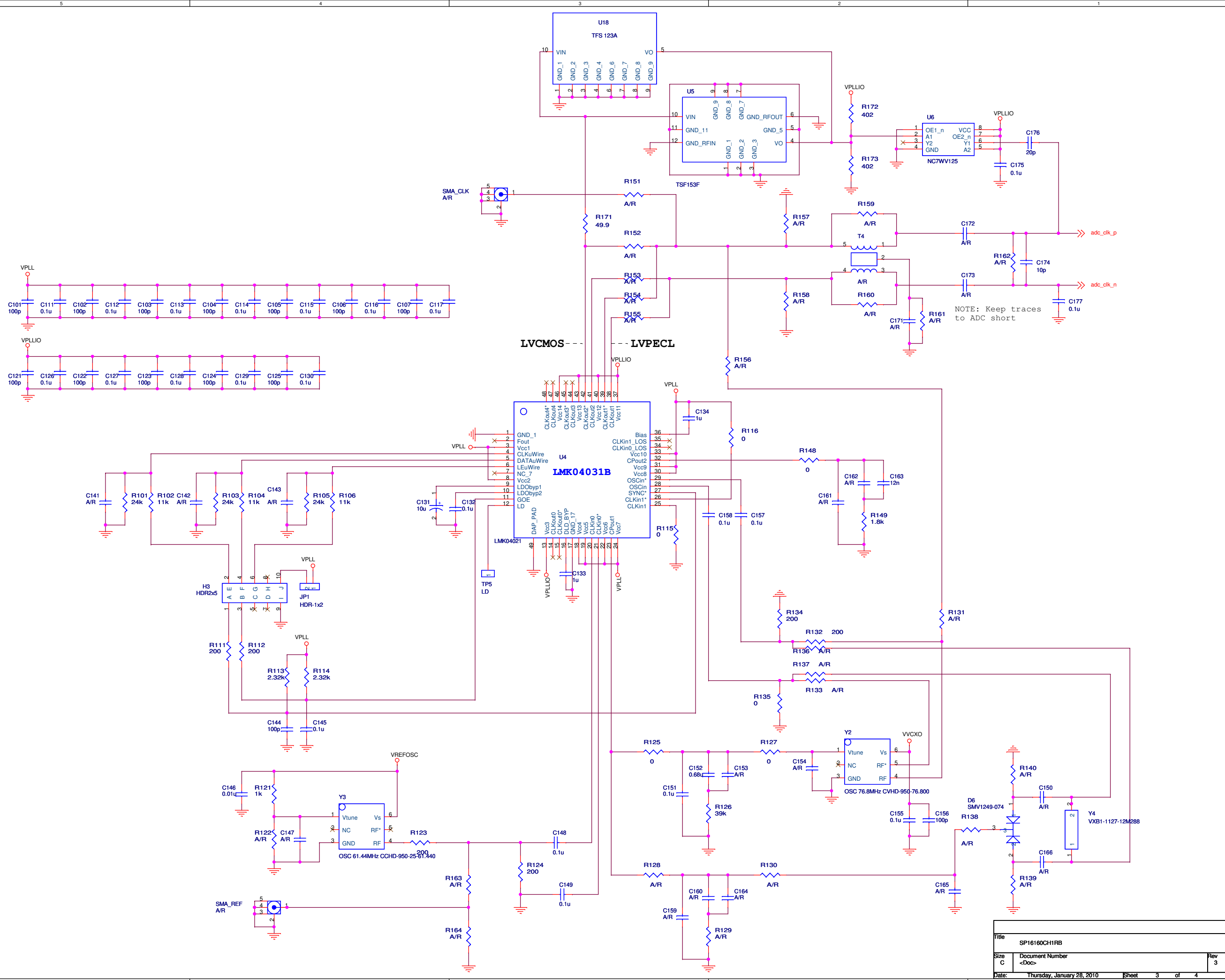
LMH SPI

1:4 Z Transformer converts
50 ohm to 200 ohm DVGA input

Place bypass caps
as close to pins
as possible on back
side

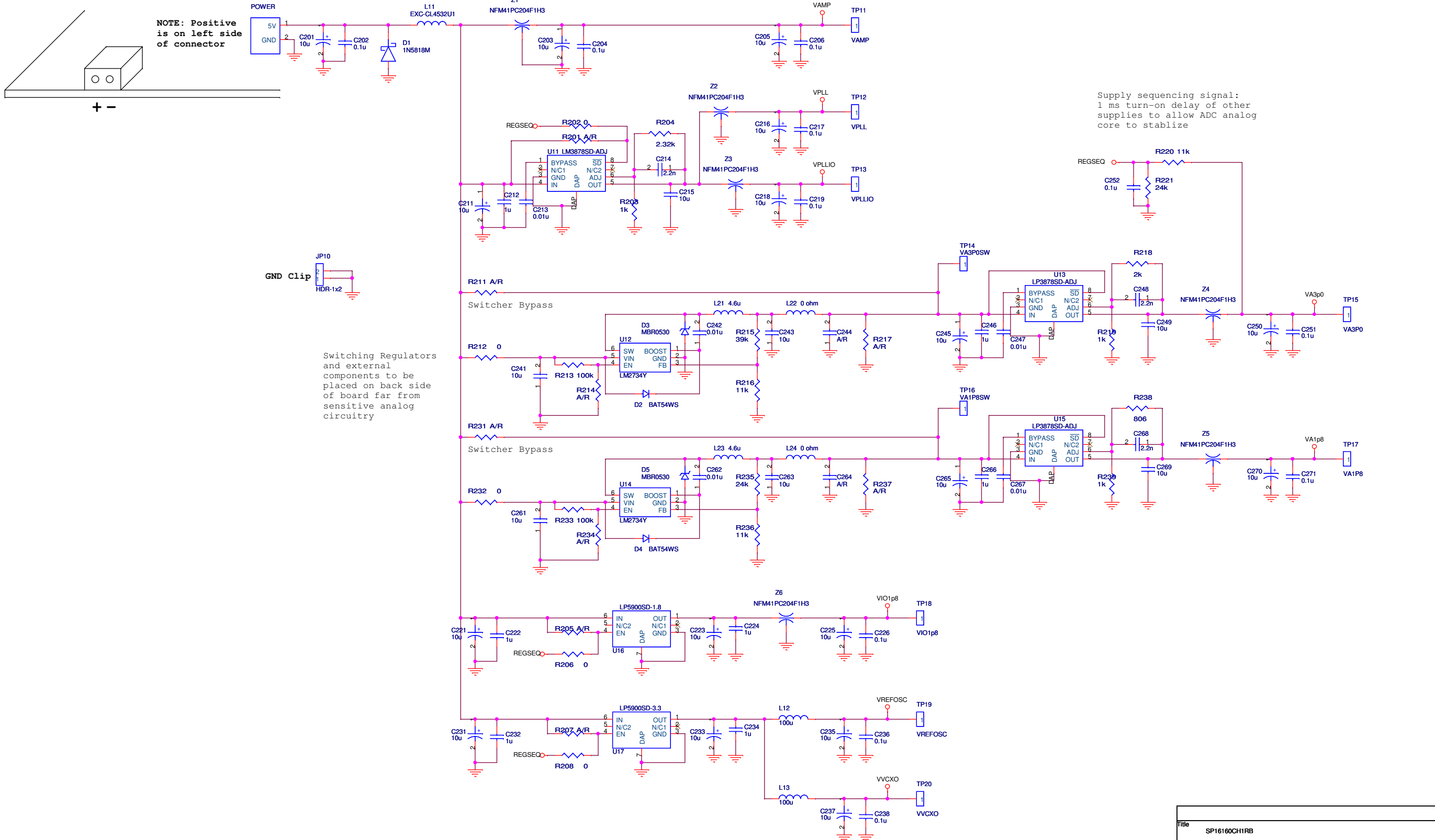
Pulldown R's restrict high
voltage to 3.3V

Title			SP16160CH1RB
Size	Document Number	Rev	
C	<Doc>	3	
Date:	Thursday, January 28, 2010	Sheet	2 of 4

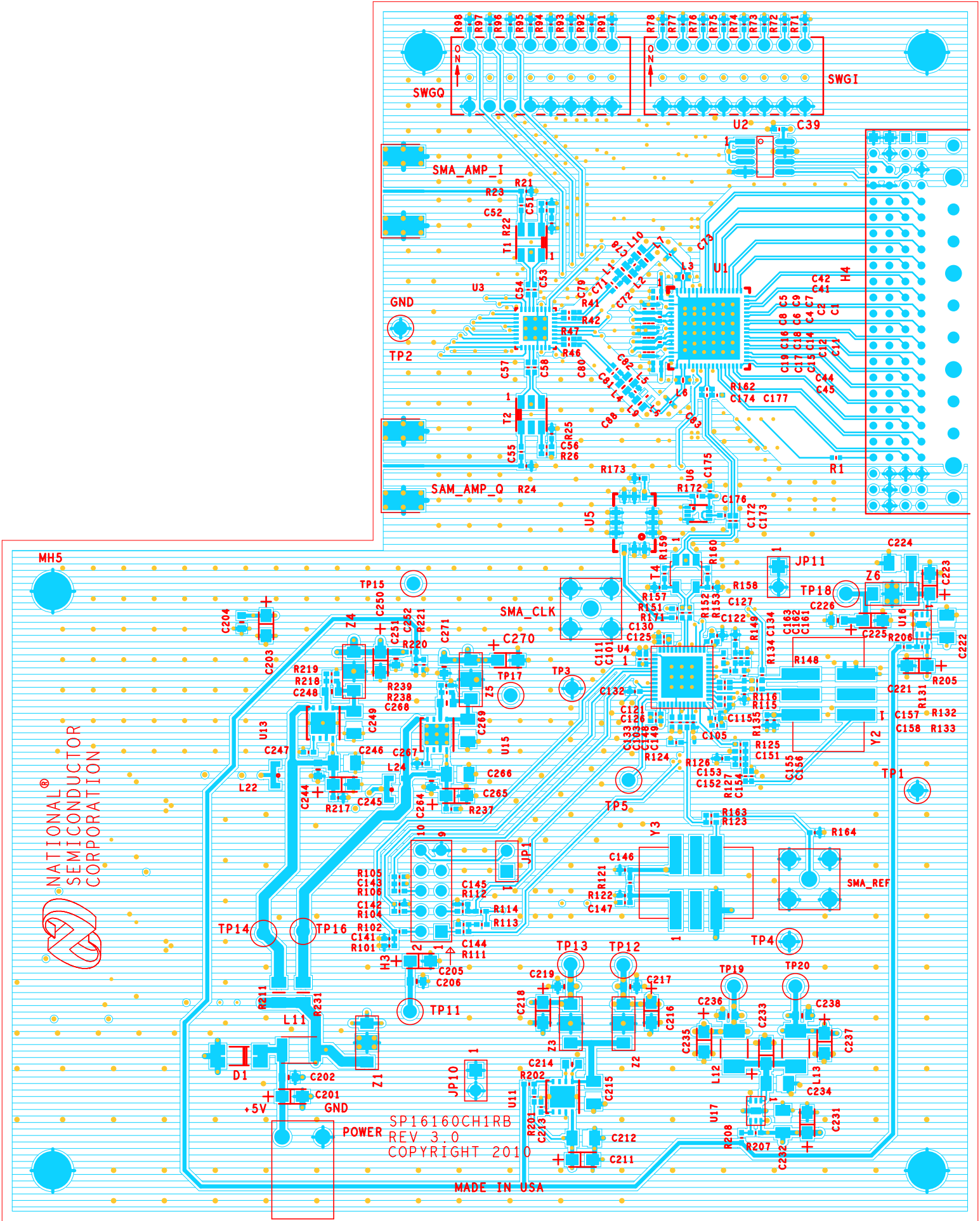


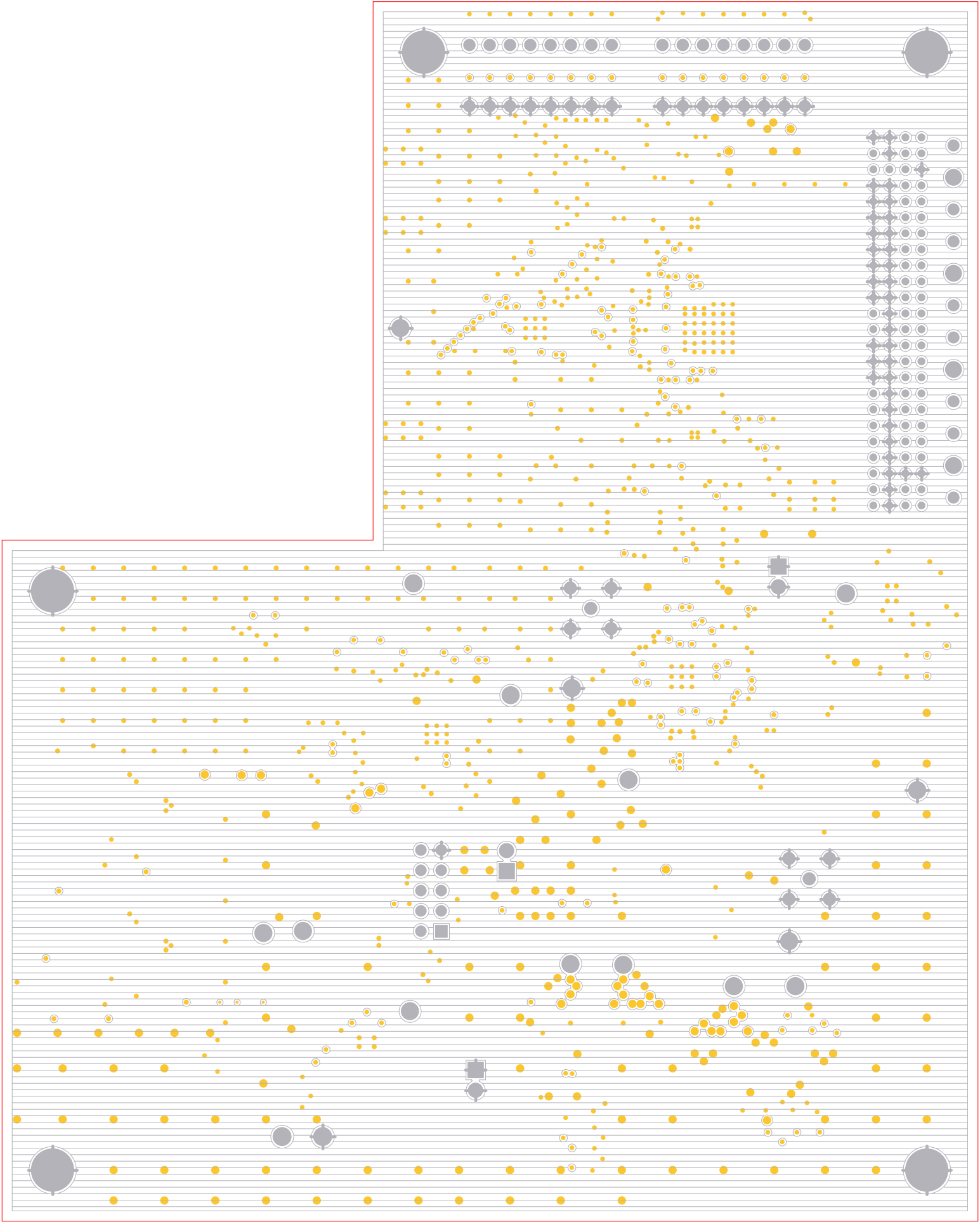
Title			SP16160CH1RB
Size	Document Number	Rev	
C	<Doc>	3	
Date:			Thursday, January 28, 2010
Sheet			3 of 4

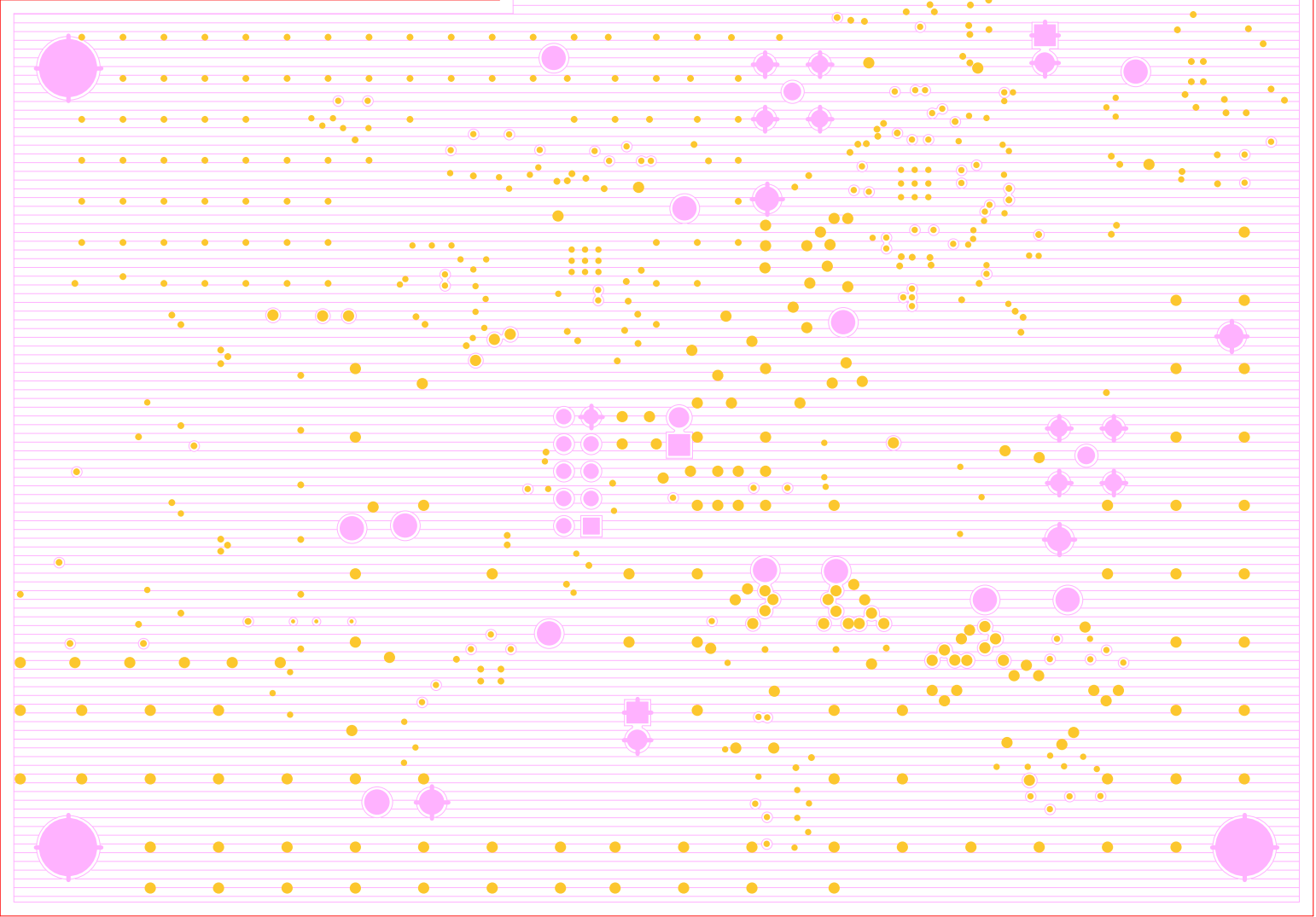
Supply Requirements		
VA3p0, VA1p8	700mW/channel (1300mW total)	
VIO1p8 (ADC VDR)	105mW	
VAMP	80mA (=400mW @5V)	
VPLL, VPLLIO	180mA (=600mW @3.3V)	
VREFOSC, VVCXO	< 50mA @3.3V	



Title		
SP16160CH1RB		
Size	Document Number	Rev
C	<Doc>	3
Date: Thursday, January 28, 2010 Sheet 4 of 4		









4 LAYERS SEMICONDUCTOR LAYER

