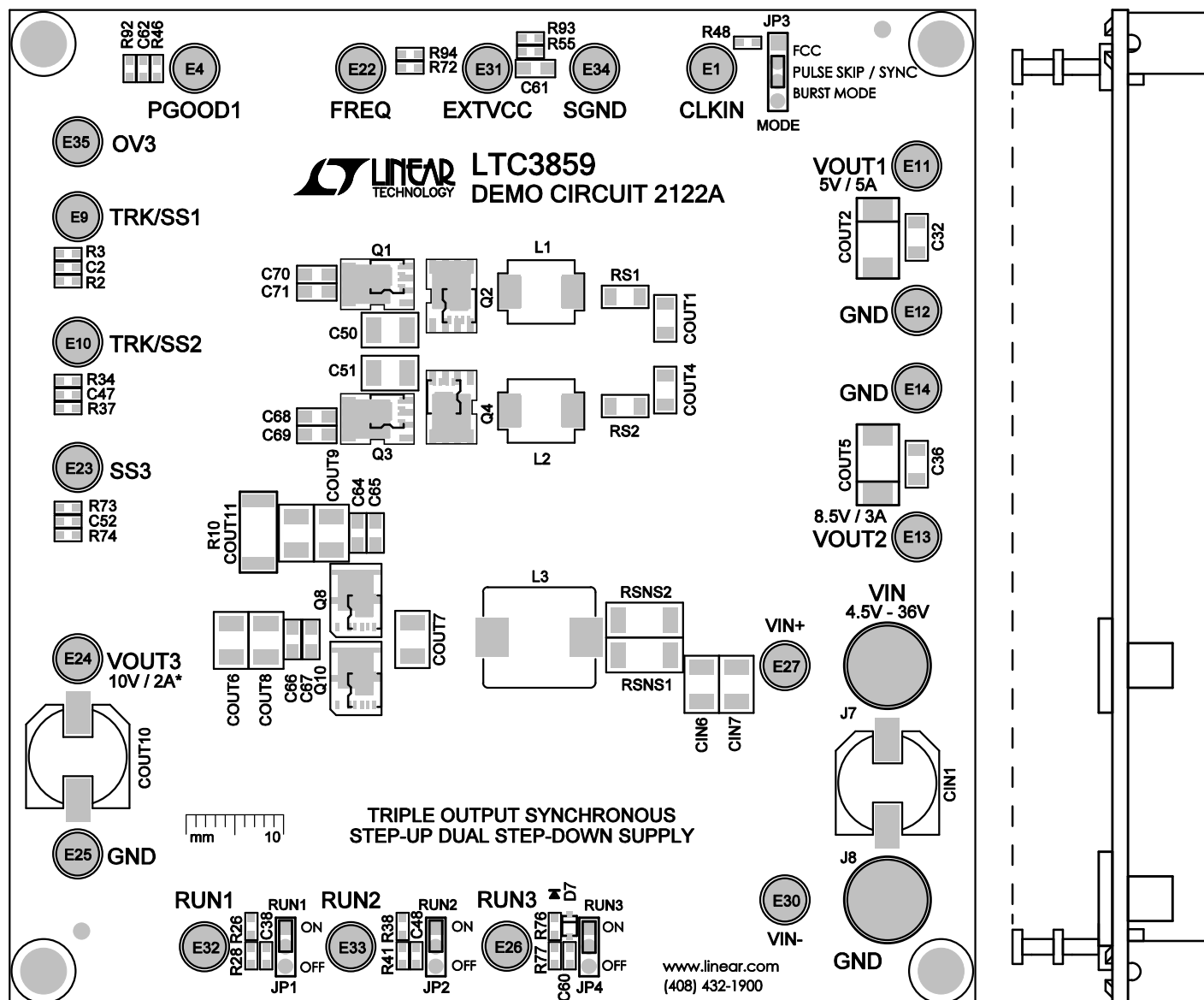


NOTES: UNLESS OTHERWISE SPECIFIED,

1. WORKMANSHIP SHALL BE IN ACCORDANCE WITH IPC-A-610.
2. INSTALL SHUNTS APPROXIMATELY WHERE SHOWN.
3. DO NOT APPLY ANY KIND OF ASSEMBLY STAMP OR QA STAMP TO ANY BOARD.



LINEAR TECHNOLOGY CORPORATION

DC2122A REV 2
09/23/13

TOP SILKSCREEN

		<p>1630 MCCARTHY BLVD MILPITAS, CA 95035 PH: (408)432-1900 www.linear.com LTC CONFIDENTIAL- FOR CUSTOMER USE ONLY</p>		
APPROVALS	DATE	TITLE:		
DRAWN MI	06/07/13	ASSY, LTC3859ALEUHF, TRIPLE OUTPUT SYNCHRONOUS STEP-UP DUAL STEP-DOWN SUPPLY		
CHECKED		SIZE N/A	DWG. NO. DEMO CIRCUIT 2122A	REV 2
APPROVED DING L.	09/23/13			
DESIGN				
		SCALE: NONE	FILE: 2122A-2 PCB	SHT 1 of 2