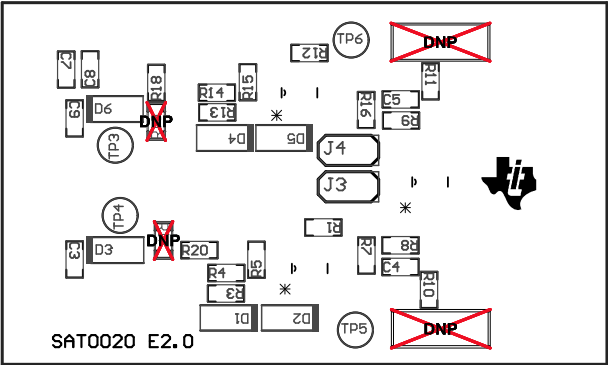
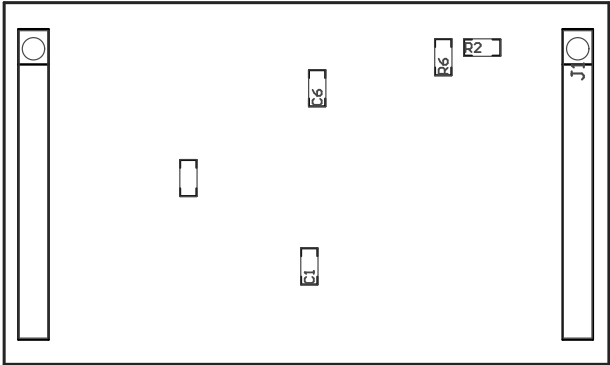


- ZZ1 ■Install label in silkscreened box after final wash. Text shall be 8 pt font. Text shall be per Table 1
- ZZ2 ■These assemblies are ESD sensitive, ESD precautions shall be observed.
- ZZ3 ■These assemblies must be clean and free from flux and all contaminants. Use of no clean flux is not acceptable.
- ZZ4 ■These assemblies must comply with workmanship standards IPC-A-610 Class 2., unless otherwise specified.



COMPONENTS MARKED 'DNP' SHOULD NOT BE POPULATED, AND MAY NOT BE IN BILL OF MATERIALS
ASSEMBLY VARIANT: 001

PCB VIEWED FROM TOP SIDE	BOARD #: SAT0020	REV: E2	SUN REV: Not In VersionControl
IGNORE -> Top Overlay			
PLOT NAME = Top Assembly Drawing	GENERATED : 3/14/2014 5:20:45 PM	TEXAS INSTRUMENTS	



COMPONENTS MARKED 'DNP' SHOULD NOT BE POPULATED, AND MAY NOT BE IN BILL OF MATERIALS
ASSEMBLY VARIANT: 001

PCB VIEWED FROM BOTTOM SIDE	BOARD #: SAT0020	REV: E2	SUN REV: Not In VersionControl
	IGNORE -> Bottom Overlay		
PLOT NAME = Bottom Assembly Drawing	GENERATED : 3/14/2014 5:20:48 PM		TEXAS INSTRUMENTS