

A

A

B

B

C

C

D

D

PCB Number: SAT0020  
PCB Rev: E2

PCB  
LOGO  
Texas Instruments



FID4      FID5      FID6

ZZ1

**Label Assembly Note**

This Assembly Note is for PCB labels only

ZZ2

### Assembly Note

These assemblies are ESD sensitive, ESD precautions shall be observed.

ZZ3

### Assembly Note

These assemblies must be clean and free from flux and all contaminants. Use of no clean flux is not acceptable.

ZZ4

### Assembly Note

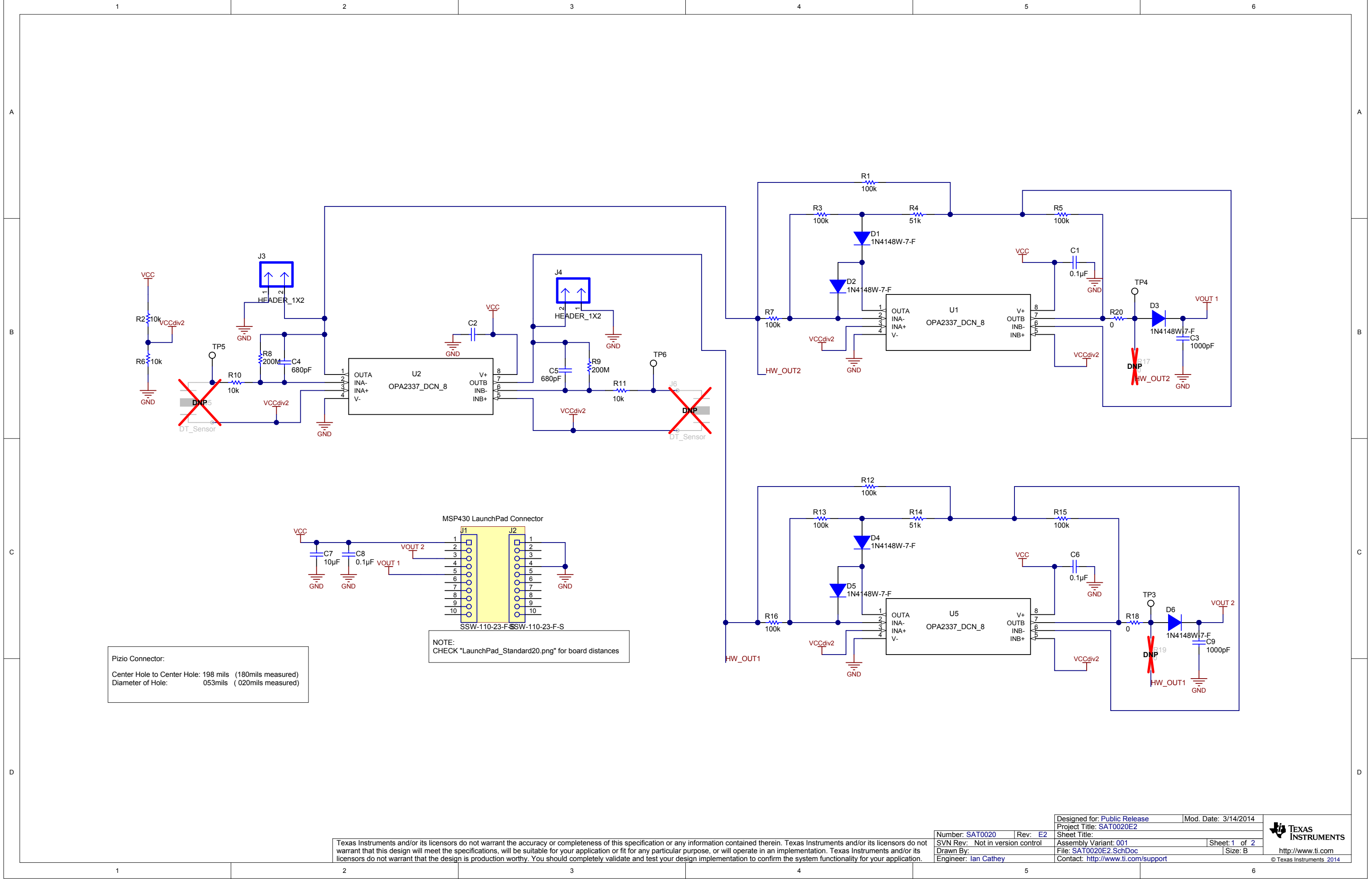
These assemblies must comply with workmanship standards IPC-A-610 Class 2., unless otherwise specified.

Texas Instruments and/or its licensors do not warrant the accuracy or completeness of this specification or any information contained therein. Texas Instruments and/or its licensors do not warrant that this design will meet the specifications, will be suitable for your application or fit for any particular purpose, or will operate in an implementation. Texas Instruments and/or its licensors do not warrant that the design is production worthy. You should completely validate and test your design implementation to confirm the system functionality for your application.

Number: SAT0020	Rev: E2
SVN Rev: Not in version control	
Drawn By:	
Engineer: Ian Cathey	

Designed for: <a href="#">Public Release</a>	Mod. Date: 3/14/2014
Project Title: <a href="#">SAT0020E2</a>	
Sheet Title:	
Assembly Variant: 001	Sheet: 1 of 2
File: <a href="#">SAT0020E2_HWR.SchDoc</a>	Size: B
Contact: <a href="http://www.ti.com/support">http://www.ti.com/support</a>	





Pizio Connector:  
Center Hole to Center Hole: 198 mils (180mils measured)  
Diameter of Hole: 053mils (020mils measured)

MSP430 LaunchPad Connector

NOTE:  
CHECK "LaunchPad\_Standard20.png" for board distances

