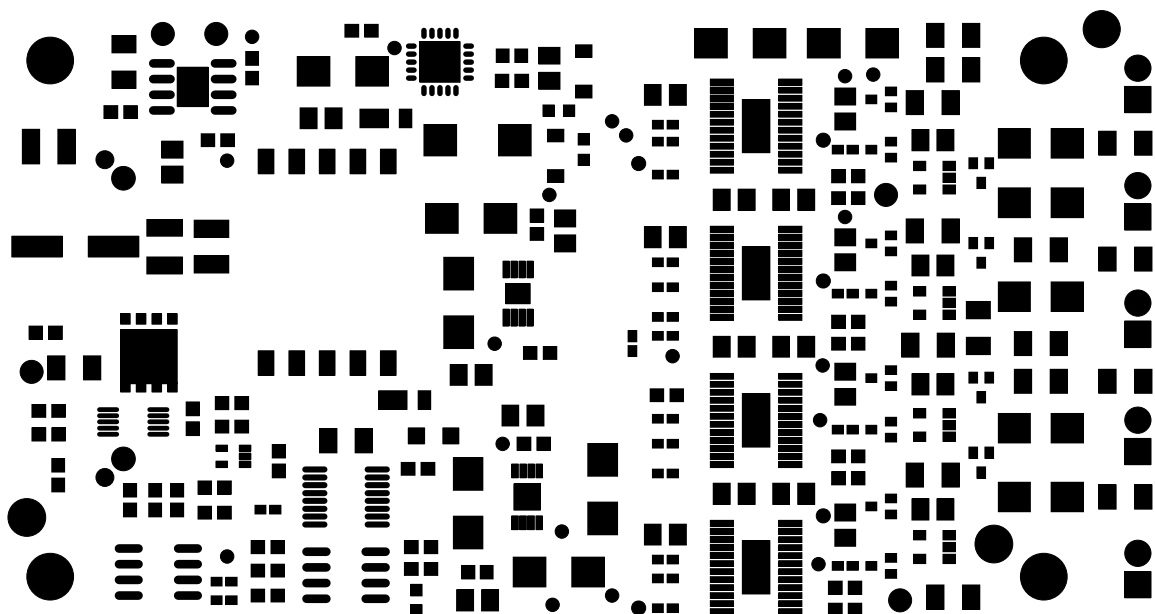
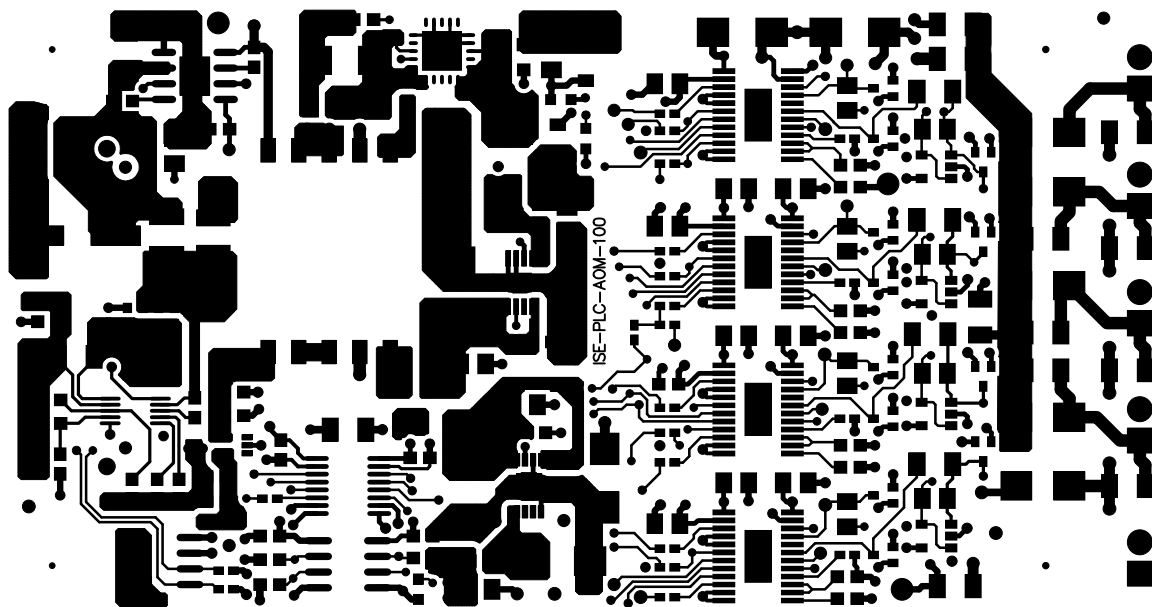


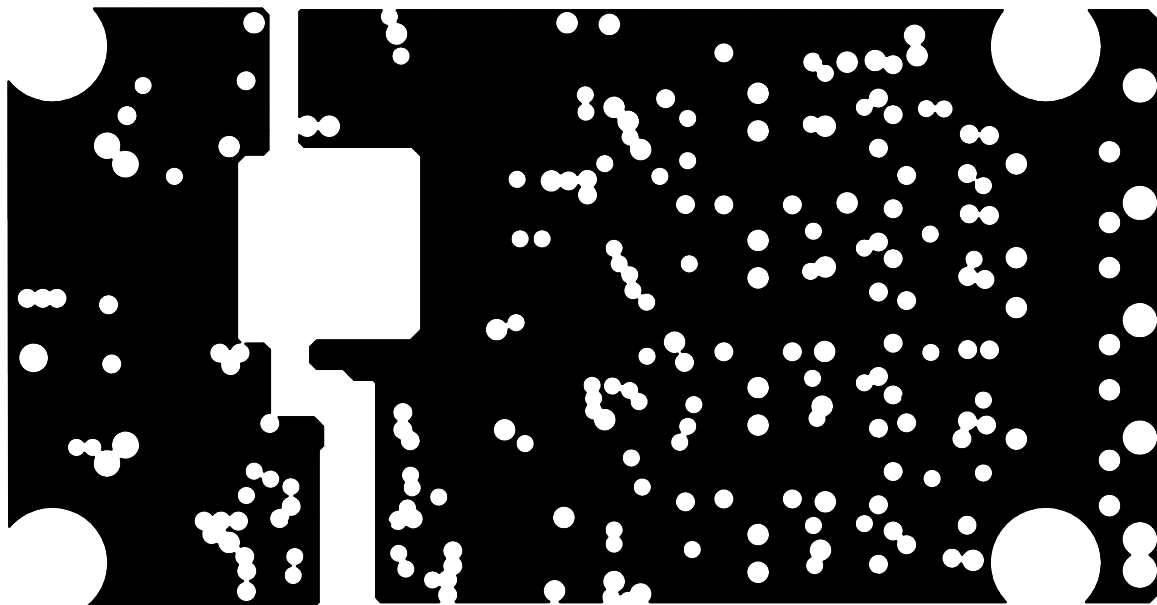
ALL ARTWORK VIEWED FROM TOP SIDE	BOARD #: ISE-PLC-AOM-100	REV:	SUN REV: Not In VersionControl
LAYER NAME = Top Overlay			
PLOT NAME = TII DAC R10.GTO	GENERATED : 12/30/2013 4:01:19 PM	TEXAS INSTRUMENTS	



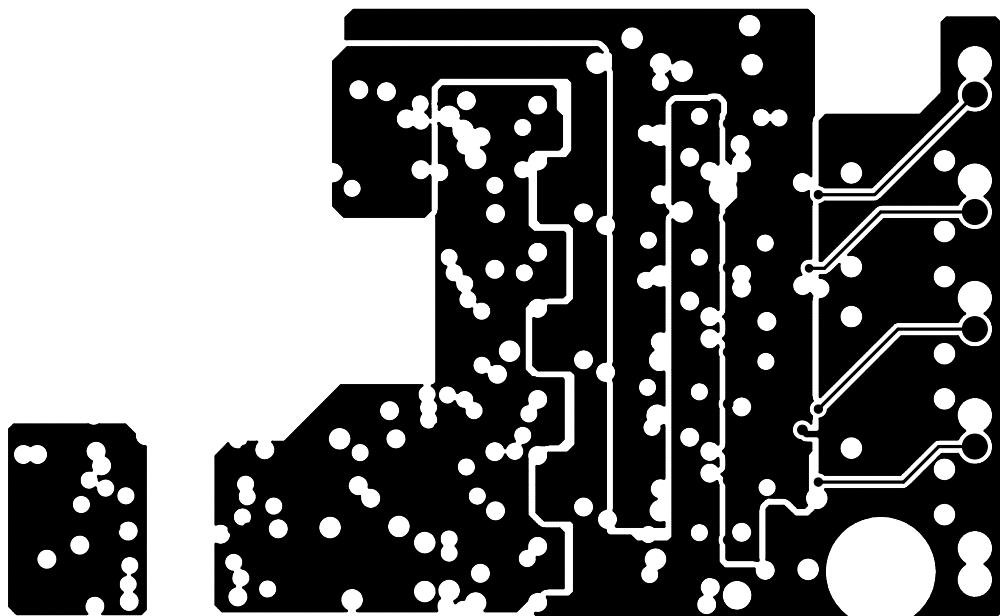
ALL ARTWORK VIEWED FROM TOP SIDE	BOARD #: ISE-PLC-AOM-100	REV:	SUN REV: Not In VersionControl
LAYER NAME = Top Solder			
PLOT NAME = TII DAC R10.GTS	GENERATED : 12/30/2013 2:27:57 PM		TEXAS INSTRUMENTS



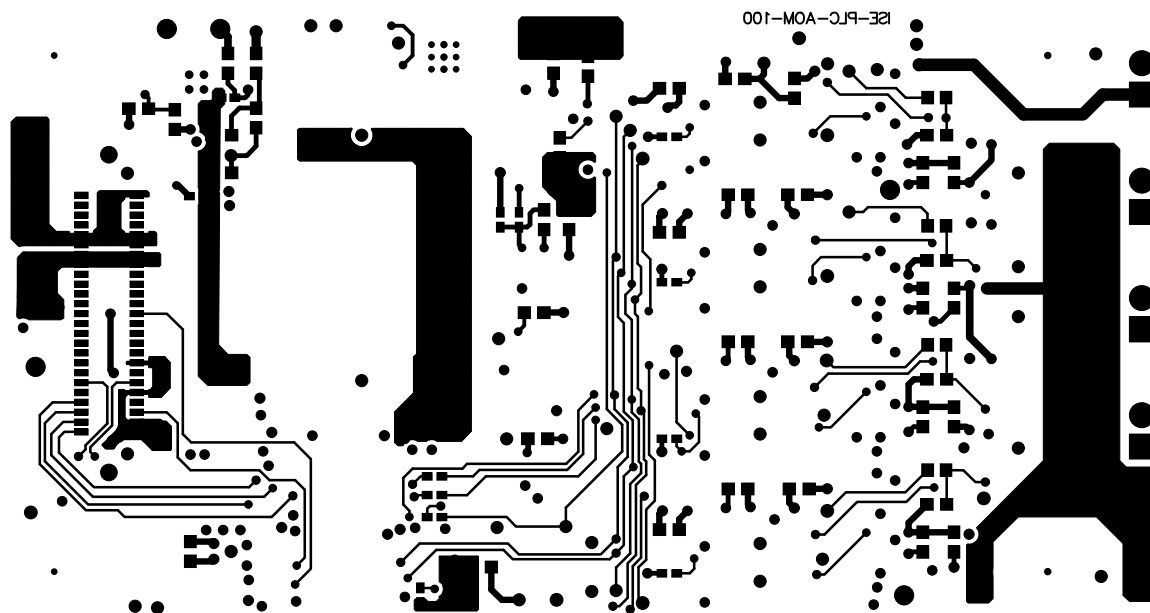
ALL ARTWORK VIEWED FROM TOP SIDE	BOARD #: ISE-PLC-AOM-100	REV:	SUN REV: Not In VersionControl
LAYER NAME = Top Layer			
PLOT NAME = TII DAC R10.GTL	GENERATED : 12/30/2013 2:27:57 PM	TEXAS INSTRUMENTS	



ALL ARTWORK VIEWED FROM TOP SIDE	BOARD #: ISE-PLC-AOM-100	REV:	SUN REV: Not In VersionControl
LAYER NAME = P1_GNDPLANE			
PLOT NAME = TII DAC R10.G1	GENERATED : 12/30/2013 2:27:57 PM	TEXAS INSTRUMENTS	

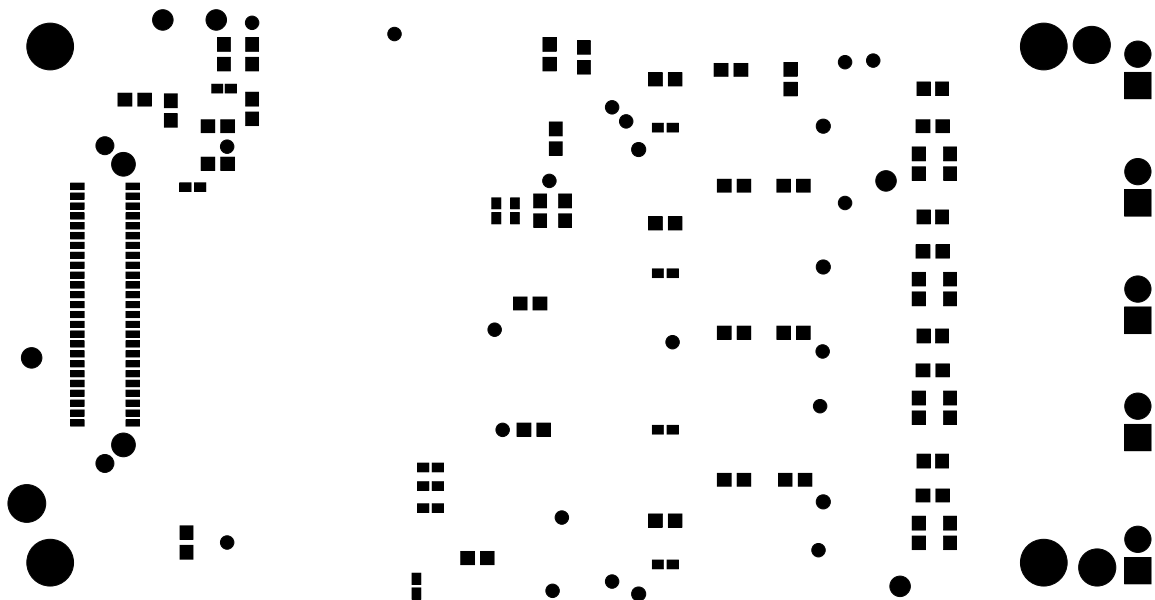


ALL ARTWORK VIEWED FROM TOP SIDE	BOARD #: ISE-PLC-AOM-100	REV:	SUN REV: Not In VersionControl
LAYER NAME = P2_PWRPLANE			
PLOT NAME = TII DAC R10.G2	GENERATED : 12/30/2013 2:27:57 PM	TEXAS INSTRUMENTS	



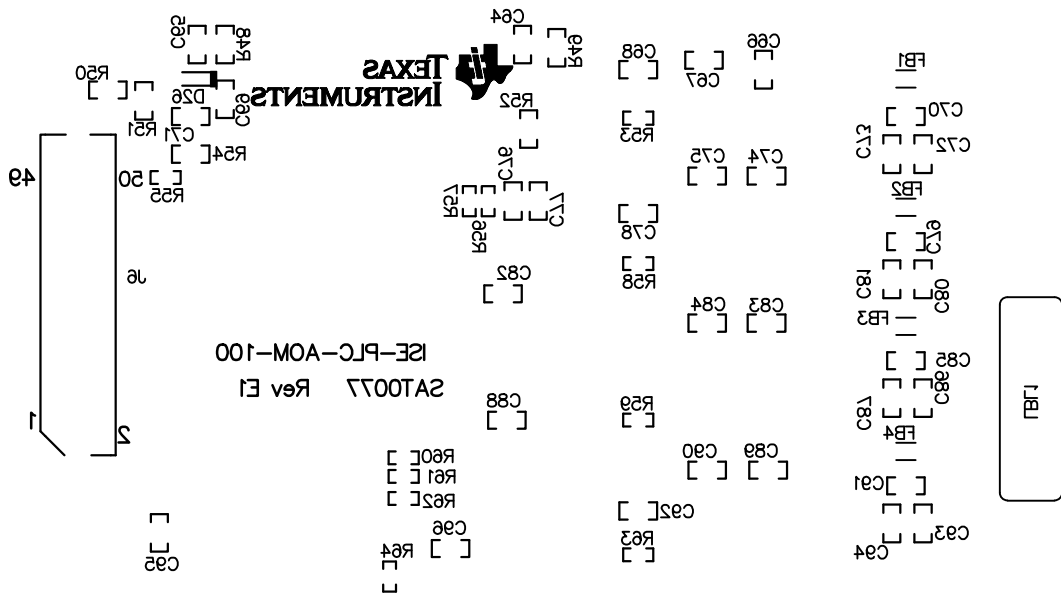
ISE-PLC-AOM-100

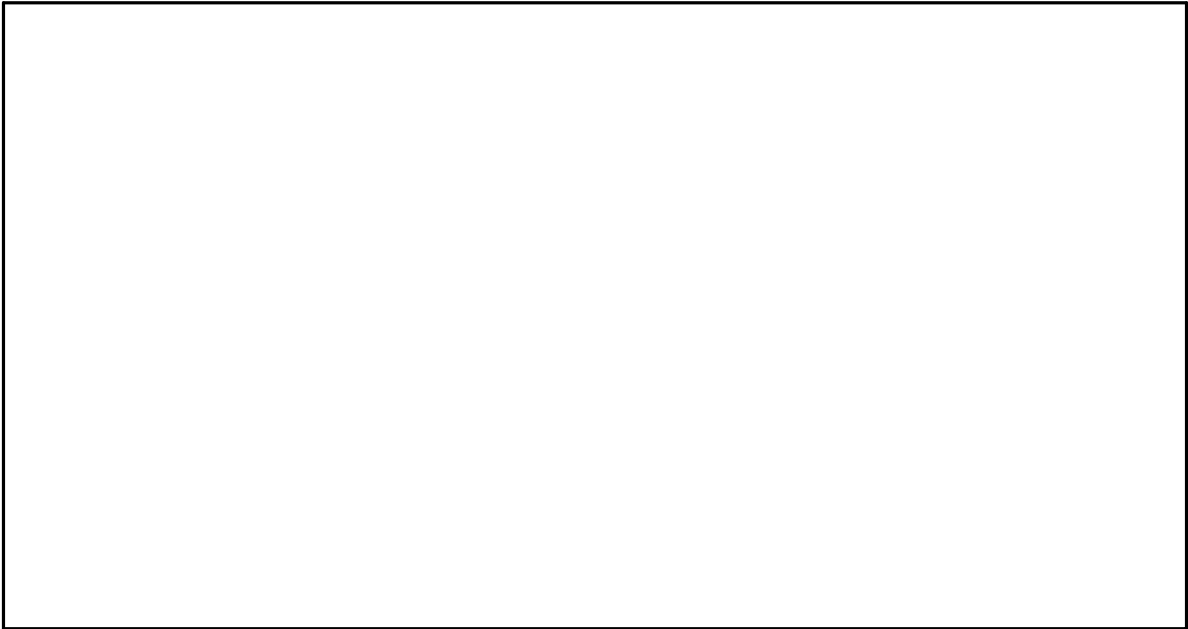
ALL ARTWORK VIEWED FROM TOP SIDE	BOARD #: ISE-PLC-AOM-100	REV:	SUN REV: Not In VersionControl
LAYER NAME = Bottom Layer			
PLOT NAME = TII DAC R10.GBL	GENERATED : 12/30/2013 2:27:57 PM	TEXAS INSTRUMENTS	



ALL ARTWORK VIEWED FROM TOP SIDE	BOARD #: ISE-PLC-AOM-100	REV:	SUN REV: Not In VersionControl
LAYER NAME = Bottom Solder			
PLOT NAME = TII DAC R10.GBS	GENERATED : 12/30/2013 2:27:57 PM	TEXAS INSTRUMENTS	

ALL ARTWORK VIEWED FROM TOP SIDE	BOARD #: ISE-PLC-AOM-100	REV:	SUN REV: Not In VersionControl
LAYER NAME = Bottom Overlay			
PLOT NAME = TII DAC R10.GB0	GENERATED : 1/3/2014	12:16:03 PM	TEXAS INSTRUMENTS





ALL ARTWORK VIEWED FROM TOP SIDE	BOARD #: ISE-PLC-AOM-100	REV:	SUN REV: Not In VersionControl
LAYER NAME = M1 Board Outline			
PLOT NAME = TII DAC R10.GM1	GENERATED : 12/30/2013 2:27:58 PM		TEXAS INSTRUMENTS