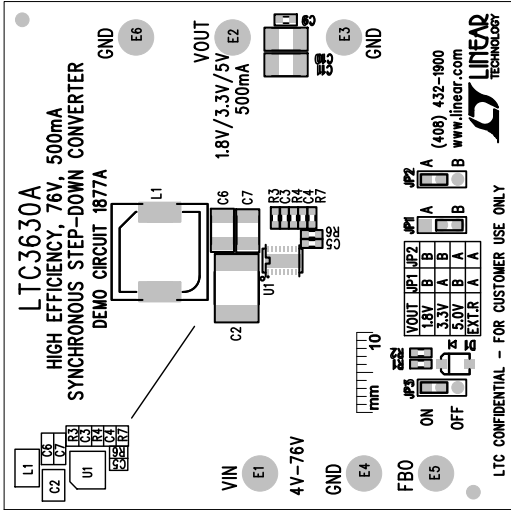


REVISION HISTORY			
ECO	REV	DESCRIPTION	APPR
	1	PRODUCTION	Charlie Z.
			DATE
			7-9-13

NOTES: UNLESS OTHERWISE SPECIFIED

1. WORKMANSHIP SHALL BE IN ACCORDANCE WITH IPC-A-610.
2. ASSEMBLY PROCESS SHALL INCLUDE: REFLOW SOLDER TOP SIDE SMD.
MAXIMUM SOLDER TEMPERATURE IS 240 DEGREES CELSIUS.
3. PARTS TO OMIT WILL BE SPECIFIED ON THE BILL OF MATERIALS
LOCATIONS OF OMITTED PARTS SHALL BE FREE OF SOLDER.
MASK THE SOLDER STENCIL WHERE SMT PARTS ARE OMITTED.
4. INSTALL SHUNTS AS SHOWN ON ASSY DRAWING.
5. DEPANELIZE BOARDS AFTER ASSEMBLY AND ROUTE-OUT THE BREAKOUT
TABS ON FOUR SIDES OF THE BOARD EDGE.
6. DO NOT APPLY ANY KIND OF ASSEMBLY STAMP OR QA STAMP TO ANY BOARD.
7. INSTALL TURRETS, STAND-OFFS AND BANANA JACKS AS SHOWN BELOW:



APPROVALS		LTC3630AEDHC		LTC3630AEDHC	
PCB DES:	HZ	IC NO.	LTC3630AEDHC	REV.	1
APP ENG:	Charlie Z.	SIZE	N/A	DEMO CIRCUIT 1877A	1
TITLE: TOP ASSEMBLY DRAWING:		HIGH EFFICIENCY, 76V, 500mA SYNCHRONOUS STEP-DOWN CONVERTER		FILENAME: DC1877A-1.PCB	
SCALE = NONE		SHT 1 of 2		SHT 1 of 2	