



LM5121 Single-Phase Synchronous Boost Converter with Input Disconnect

TI reference design number: PMP9372 REVA1

Input: 6.4VDC to 15VDC

Output: 15.45 VDC @ 4A

DC – DC Test Results

Table of Contents

1	Test Specifications.....	3
2	Circuit Description.....	3
3	Board Photos	3
4	Efficiency	4
4.1	Efficiency Results	4
4.2	Efficiency Data.....	5
5	Thermal	7
5.1	Thermal Image at 12Vin and 4A Load	7
5.2	Thermal Image at 6.4Vin and 2A Load	8
6	Startup	8
6.1	Startup using EN at No Load	8
6.1	Startup Using EN at Full Load	9
7	Output Voltage Ripple and Switch Voltage	9
8	Current Limit	10
8.1	Current Limit Table	10
8.2	Short Circuit Test.....	10
8.3	Startup into Short Circuit	10
9	Load Transient Response.....	11
10	Control Loop Frequency Response	11
11	Output Over-Voltage and Under-Voltage Power Good	12

1 Test Specifications

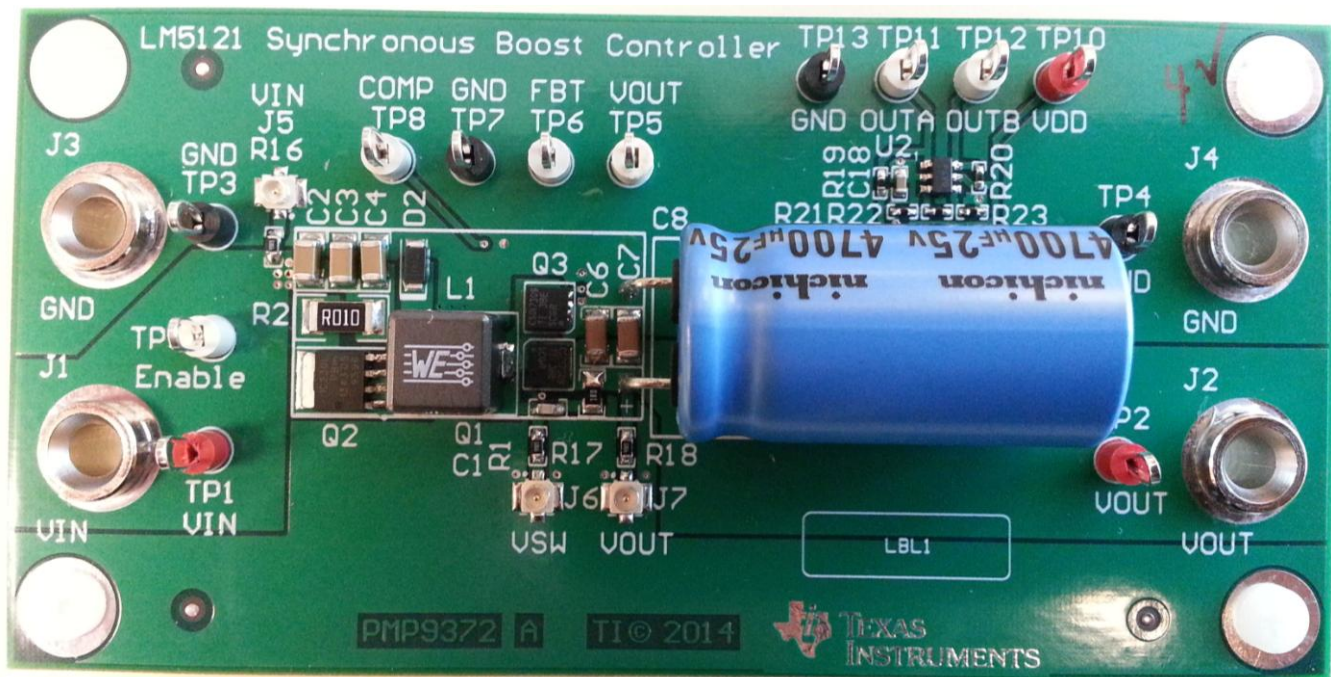
Vin Minimum	6.4 VDC
Vin Maximum	15 VDC
Vout	15.45 VDC
Iout	4A Max. (2A Max. at 6.4Vin)

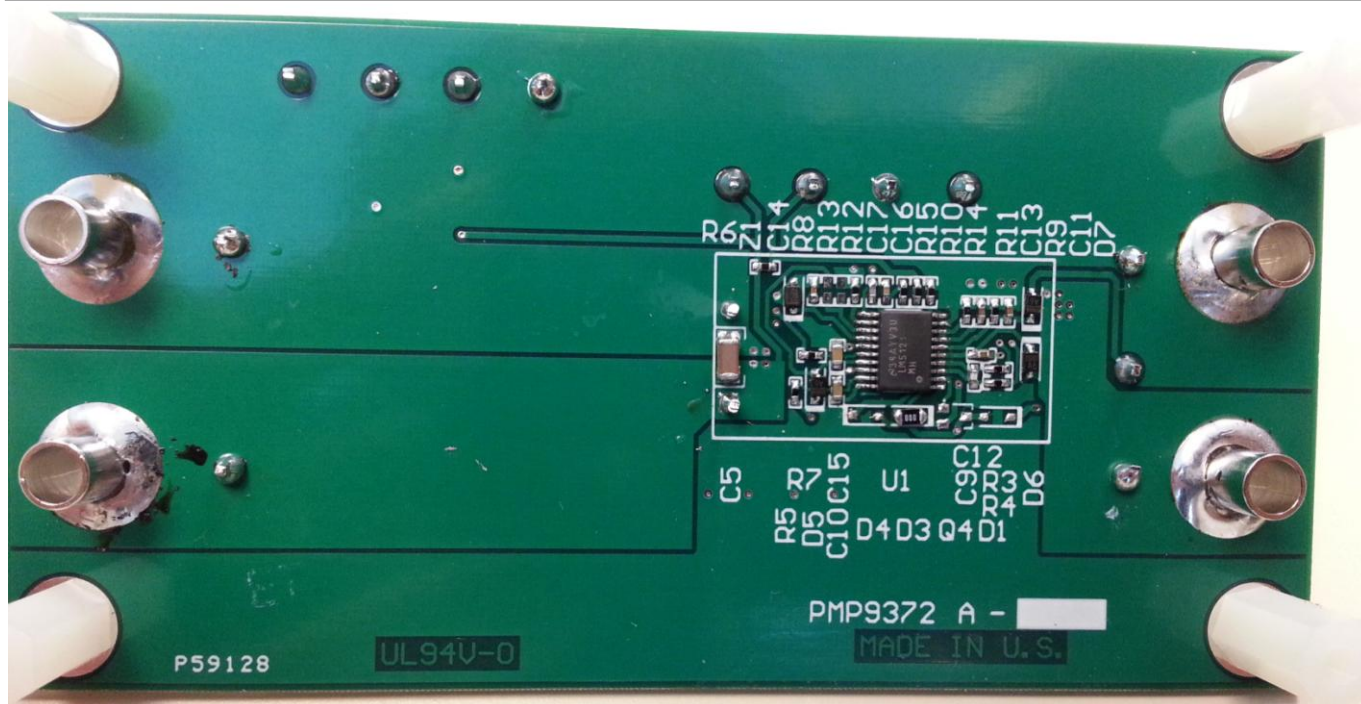
2 Circuit Description

PMP9372 is a single-phase synchronous boost converter, which utilizes the LM5121 controller. The design features inrush current limiting, input over-current disconnect, and can be set for latch-off or auto restart on fault. Inrush limiting is set to 11A nominal, which allows startup into a 4700 μ F output capacitor. The TPS3700DDC is used as an output voltage monitor, which provides Power Good signaling of output over-voltage and under-voltage.

3 Board Photos

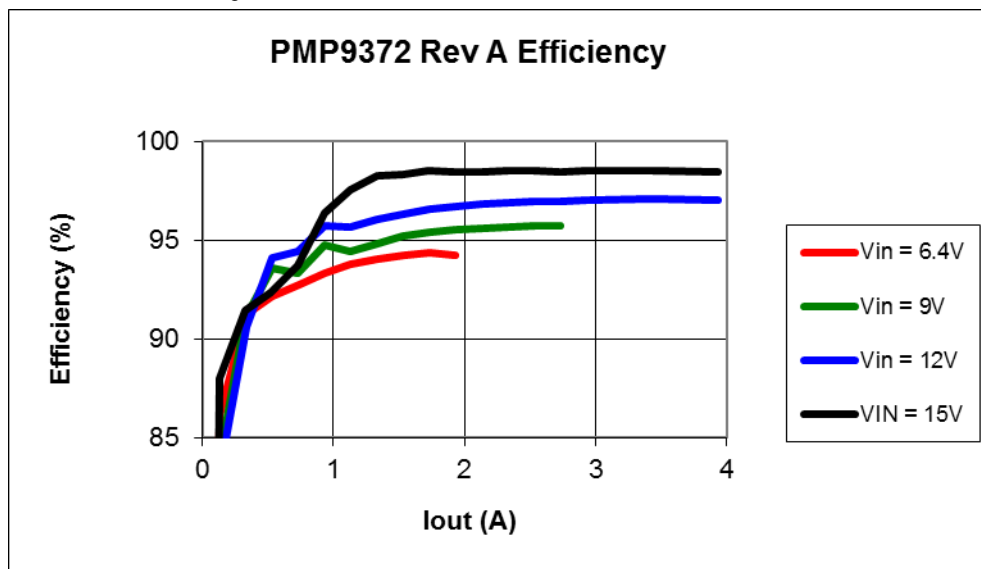
The design is built on PMP9372 Rev A printed circuit board. This is a 6-layer PCB with 1 oz. copper on the external layers and 0.5 oz. copper on all inner layers. PCB dimensions are 4.2 x 2.1 inch. The LM5121 solution size is 1.10 x 0.59 inch.





4 Efficiency

4.1 Efficiency Results



PMP9372 Test Results

**4.2 Efficiency Data**

Vin (V)	Iin (A)	Vout (V)	Iout (A)	Pin (W)	Pout (W)	Pdis (W)	Efficiency (%)
6.402	0.007	15.395	0.000	0.04	0.00	0.04	0.000
6.402	0.377	15.394	0.135	2.41	2.08	0.34	86.105
6.401	0.880	15.394	0.334	5.63	5.14	0.49	91.278
6.401	1.388	15.394	0.532	8.88	8.19	0.69	92.178
6.401	1.901	15.393	0.733	12.17	11.28	0.89	92.725
6.401	2.409	15.392	0.935	15.42	14.39	1.03	93.330
6.401	2.900	15.392	1.131	18.56	17.41	1.15	93.780
6.401	3.405	15.392	1.332	21.80	20.50	1.29	94.066
6.401	3.915	15.392	1.534	25.06	23.61	1.45	94.220
6.401	4.414	15.391	1.732	28.25	26.66	1.60	94.348
6.401	4.931	15.391	1.933	31.56	29.75	1.81	94.257
6.401	2.138	7.303	2.134	13.69	15.58	-1.90	113.878
6.409	2.535	5.707	2.333	16.25	13.31	2.93	81.951
6.397	2.711	5.669	2.534	17.34	14.37	2.98	82.834
6.401	2.740	5.931	2.736	17.54	16.23	1.31	92.522
6.401	2.972	5.663	2.932	19.02	16.60	2.42	87.280
6.401	3.532	5.660	3.434	22.61	19.44	3.17	85.970
6.401	4.006	5.654	3.936	25.64	22.25	3.39	86.786

Vin (V)	Iin (A)	Vout (V)	Iout (A)	Pin (W)	Pout (W)	Pdis (W)	Efficiency (%)
9.000	0.007	15.397	0.000	0.06	0.00	0.06	0.000
9.000	0.267	15.396	0.131	2.40	2.02	0.39	83.932
9.000	0.622	15.396	0.331	5.60	5.10	0.50	91.034
9.000	0.969	15.395	0.530	8.72	8.16	0.56	93.560
9.000	1.338	15.395	0.730	12.04	11.24	0.80	93.326
9.000	1.682	15.395	0.932	15.14	14.35	0.79	94.782
9.000	2.048	15.394	1.131	18.43	17.41	1.02	94.459
9.000	2.399	15.394	1.330	21.59	20.47	1.12	94.827
9.000	2.749	15.394	1.530	24.74	23.55	1.19	95.198
9.000	3.100	15.394	1.729	27.90	26.62	1.28	95.399
9.000	3.458	15.394	1.931	31.12	29.73	1.40	95.514
8.999	3.815	15.394	2.132	34.33	32.82	1.51	95.598
9.000	4.170	15.394	2.332	37.53	35.90	1.63	95.654
9.000	4.527	15.394	2.533	40.74	38.99	1.75	95.705
8.999	4.881	15.394	2.732	43.92	42.06	1.87	95.748
9.000	3.024	8.263	2.929	27.22	24.20	3.01	88.927
9.000	3.469	8.259	3.430	31.22	28.33	2.89	90.735
9.000	4.000	8.254	3.934	36.00	32.47	3.53	90.198

PMP9372 Test Results

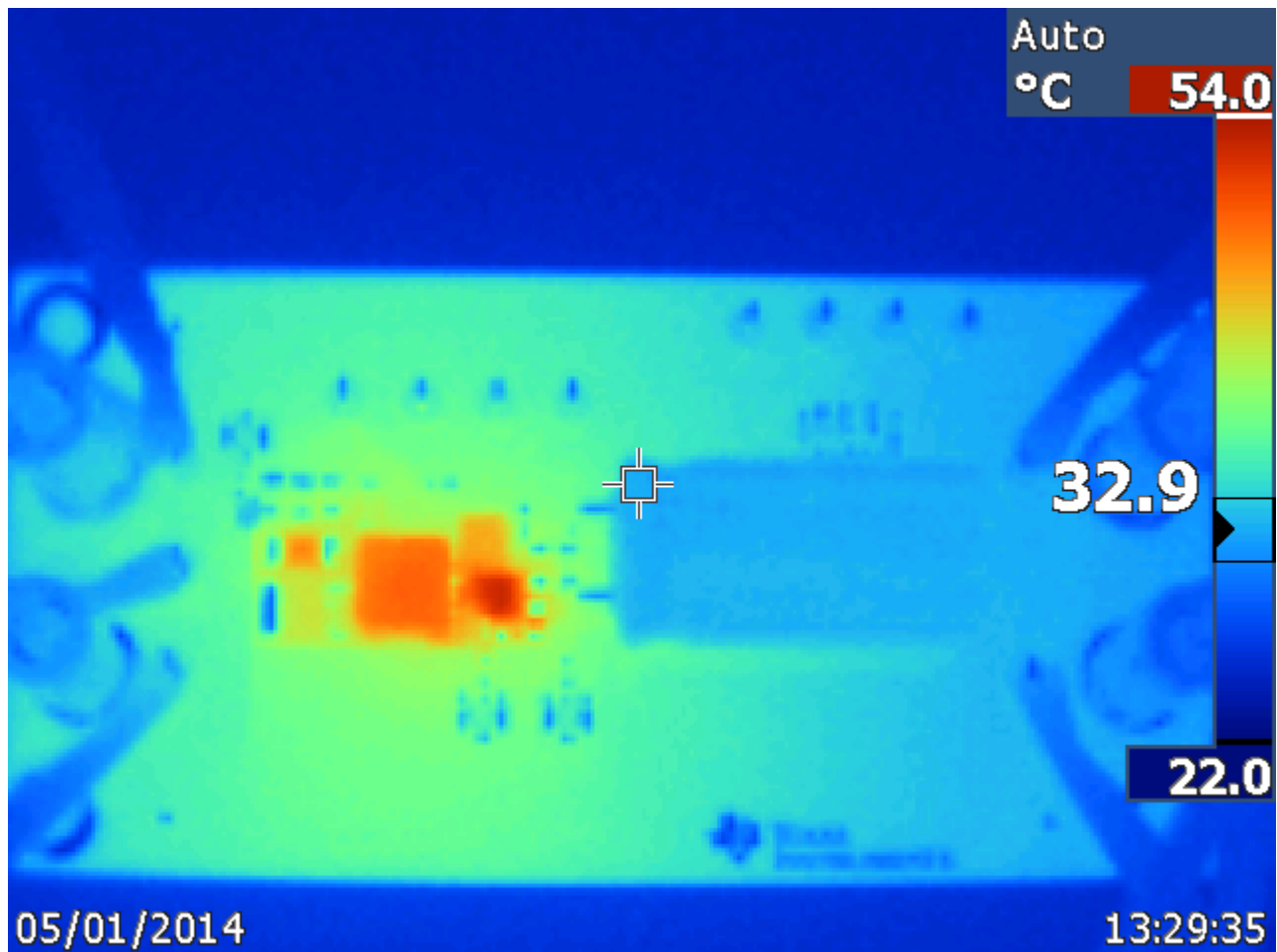


Vin (V)	Iin (A)	Vout (V)	Iout (A)	Pin (W)	Pout (W)	Pdis (W)	Efficiency (%)
12.000	0.006	15.395	0.000	0.07	0.00	0.07	0.000
12.000	0.202	15.395	0.131	2.42	2.02	0.41	83.199
12.000	0.470	15.395	0.332	5.64	5.11	0.53	90.623
12.000	0.721	15.395	0.529	8.65	8.14	0.51	94.128
12.000	0.993	15.394	0.731	11.92	11.25	0.66	94.436
12.000	1.248	15.395	0.931	14.98	14.33	0.64	95.705
12.000	1.513	15.394	1.128	18.16	17.36	0.79	95.640
12.000	1.775	15.394	1.329	21.30	20.46	0.84	96.050
12.000	2.040	15.394	1.532	24.48	23.58	0.90	96.338
12.000	2.298	15.394	1.730	27.58	26.63	0.94	96.575
12.000	2.559	15.394	1.929	30.71	29.70	1.01	96.701
12.000	2.824	15.394	2.131	33.89	32.80	1.08	96.803
12.000	3.084	15.393	2.330	37.01	35.87	1.14	96.913
12.000	3.345	15.393	2.528	40.14	38.91	1.23	96.944
12.000	3.610	15.393	2.729	43.32	42.01	1.31	96.970
12.000	3.872	15.393	2.929	46.46	45.09	1.38	97.034
12.000	4.530	15.393	3.428	54.36	52.77	1.59	97.070
12.000	5.192	15.393	3.928	62.30	60.46	1.84	97.046

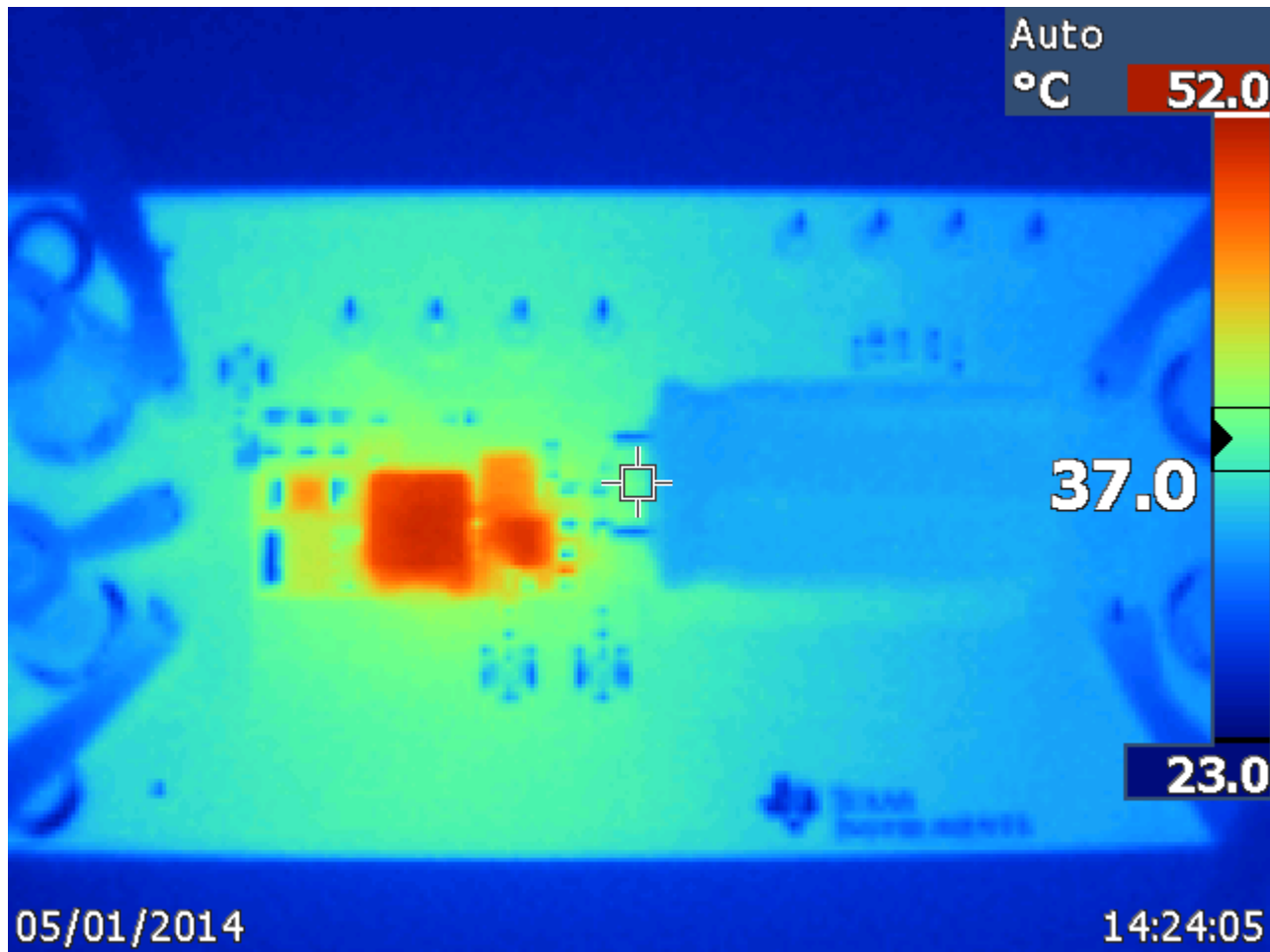
Vin (V)	Iin (A)	Vout (V)	Iout (A)	Pin (W)	Pout (W)	Pdis (W)	Efficiency (%)
15.006	0.006	15.395	0.000	0.09	0.00	0.09	0.000
15.006	0.148	15.395	0.127	2.22	1.96	0.27	88.035
15.006	0.368	15.395	0.328	5.52	5.05	0.47	91.441
15.006	0.583	15.395	0.525	8.75	8.08	0.67	92.386
15.006	0.796	15.395	0.727	11.94	11.19	0.75	93.699
15.006	0.990	15.395	0.930	14.86	14.32	0.54	96.375
15.006	1.186	15.395	1.128	17.80	17.37	0.43	97.575
15.006	1.388	15.395	1.329	20.83	20.46	0.37	98.231
15.006	1.597	15.395	1.531	23.96	23.57	0.39	98.352
15.006	1.800	15.395	1.728	27.01	26.60	0.41	98.489
15.006	2.011	15.395	1.930	30.18	29.71	0.46	98.460
15.006	2.220	15.395	2.130	33.31	32.79	0.52	98.433
15.006	2.428	15.395	2.331	36.43	35.89	0.55	98.494
15.006	2.635	15.395	2.530	39.54	38.95	0.59	98.504
15.006	2.845	15.395	2.730	42.69	42.03	0.66	98.445
15.006	3.051	15.395	2.930	45.78	45.11	0.68	98.524
15.005	3.571	15.394	3.430	53.58	52.80	0.78	98.542
15.005	4.098	15.394	3.933	61.49	60.54	0.95	98.462

5 Thermal

5.1 Thermal Image at 12Vin and 4A Load

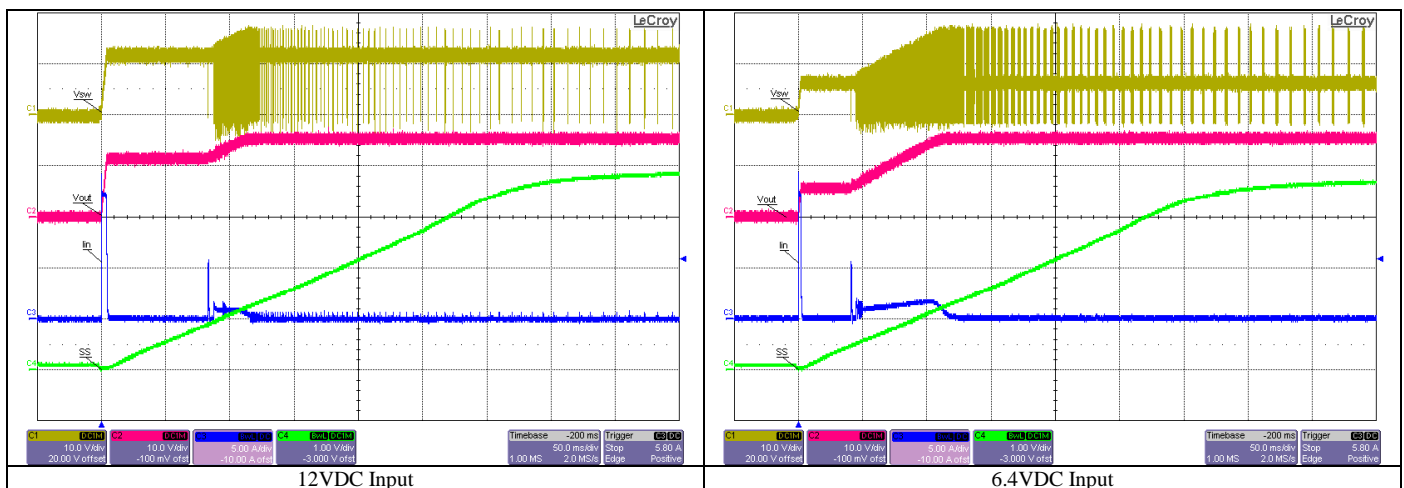


5.2 Thermal Image at 6.4V_{in} and 2A Load



6 Startup

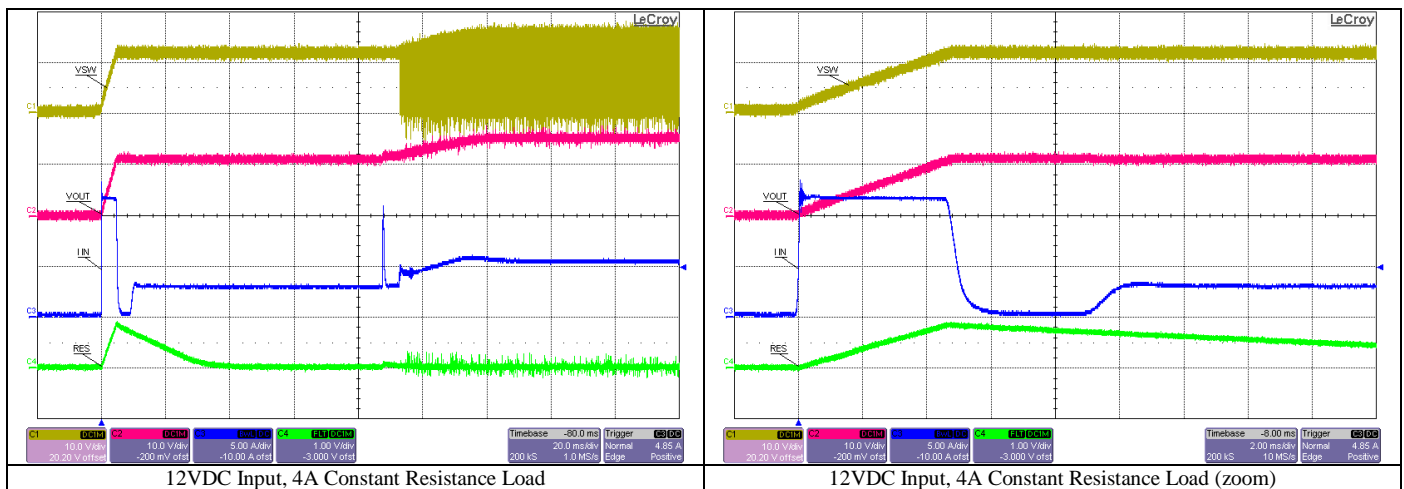
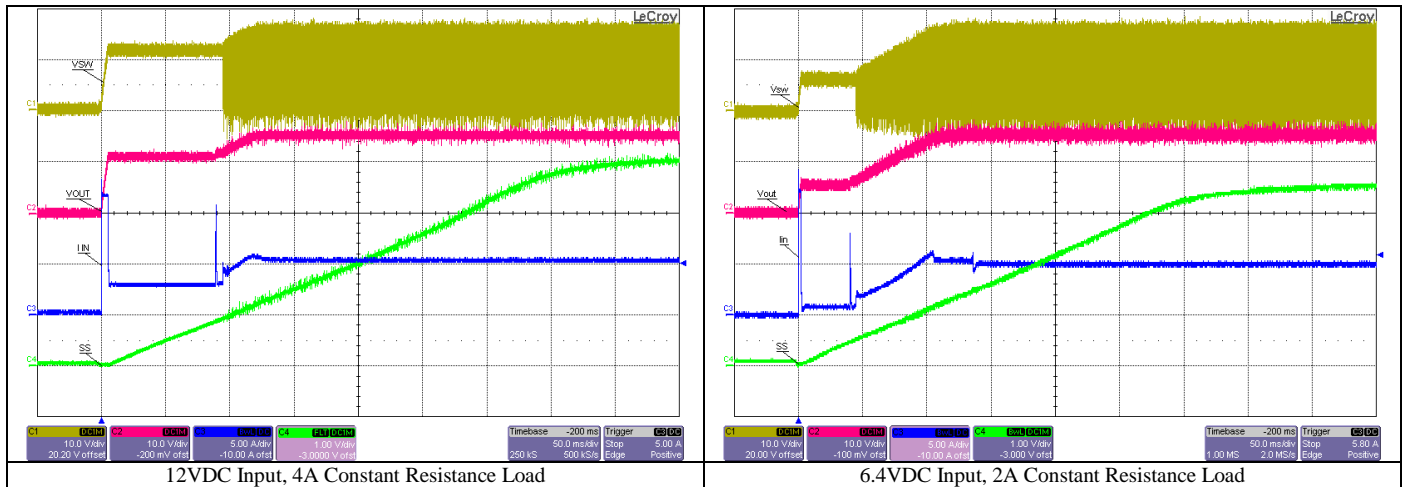
6.1 Startup using EN at No Load



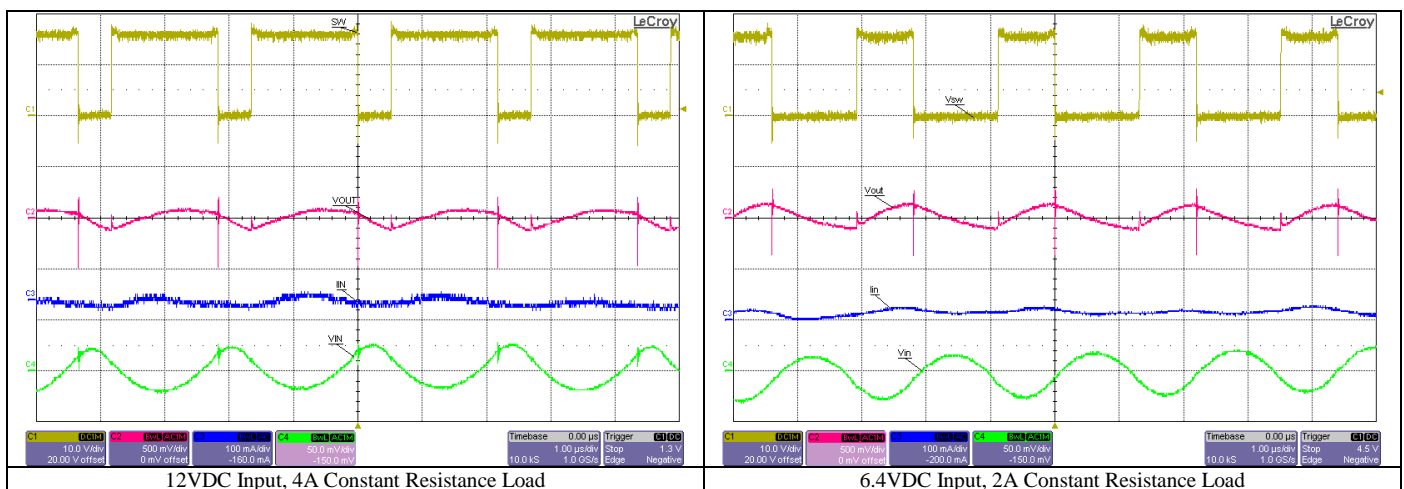
PMP9372 Test Results



6.1 Startup Using EN at Full Load



7 Output Voltage Ripple and Switch Voltage

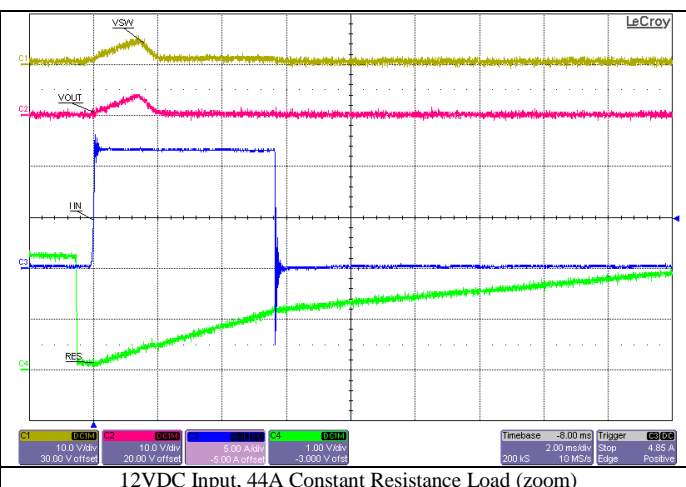
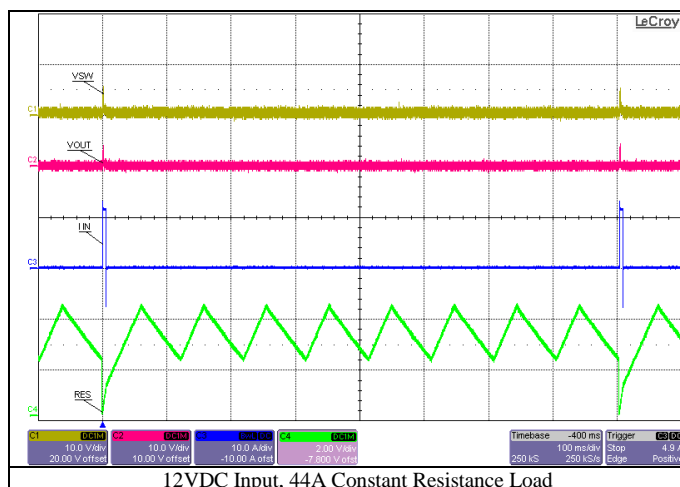


8 Current Limit

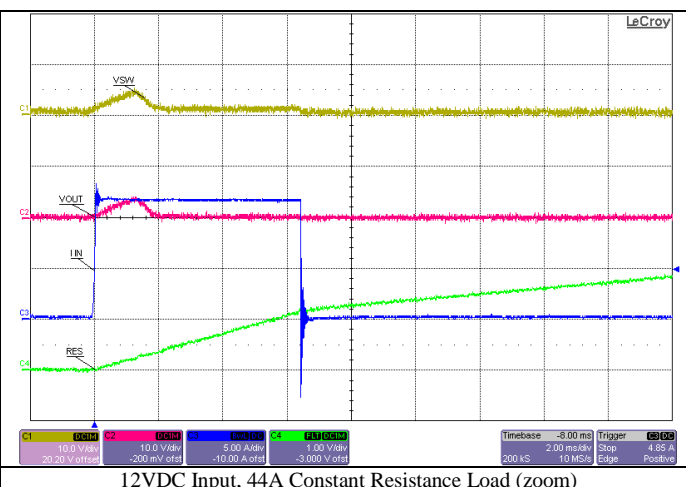
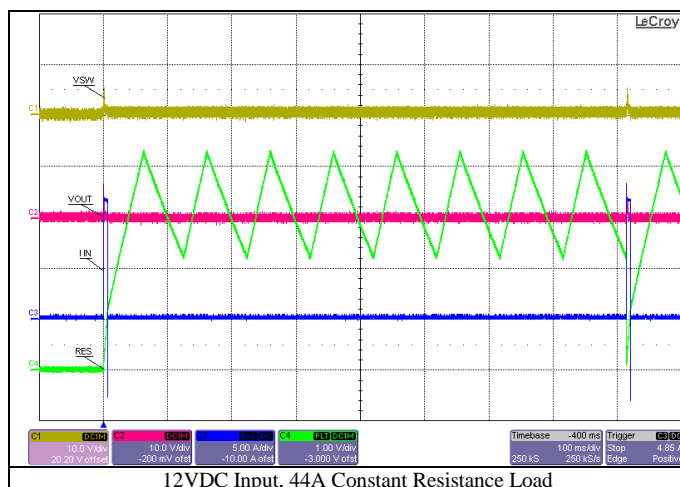
8.1 Current Limit Table

Vin (V)	Current Limit		Startup	
	Iin (A)	Iout (A)	Iin (A)	Iout (A)
12.0	5.5	4.2	5.4	4.1
11.0	5.3	3.7	5.1	3.5
10.0	5.2	3.2	4.9	3.0
9.0	5.1	2.8	4.7	2.6
8.0	5.1	2.5	4.5	2.2
7.0	5.2	2.2	4.4	1.9
6.4	5.2	2.0	4.3	1.7

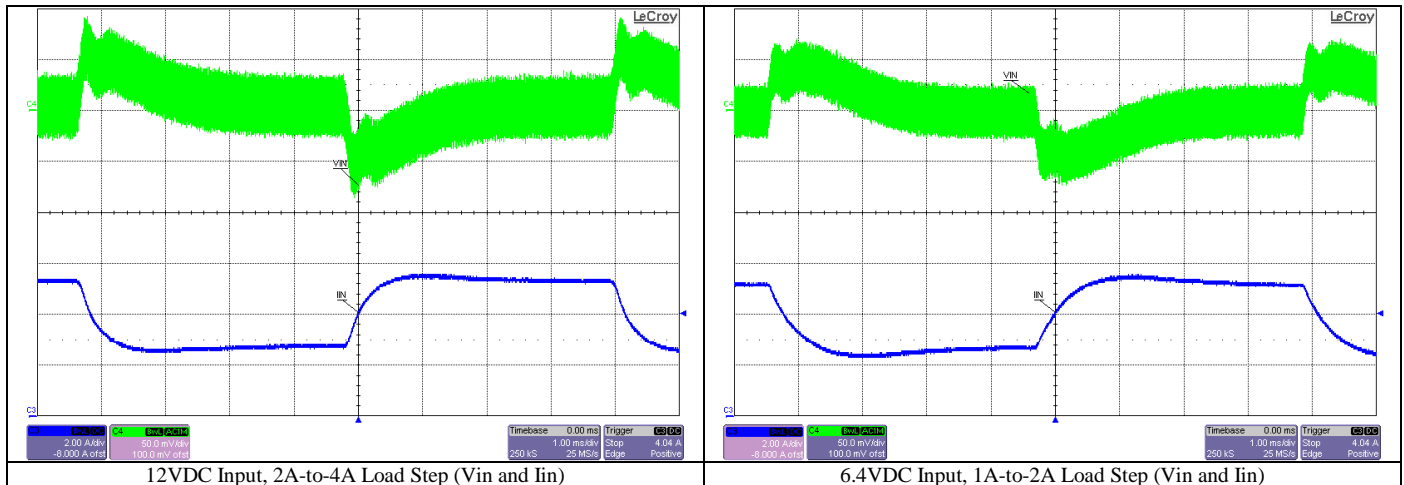
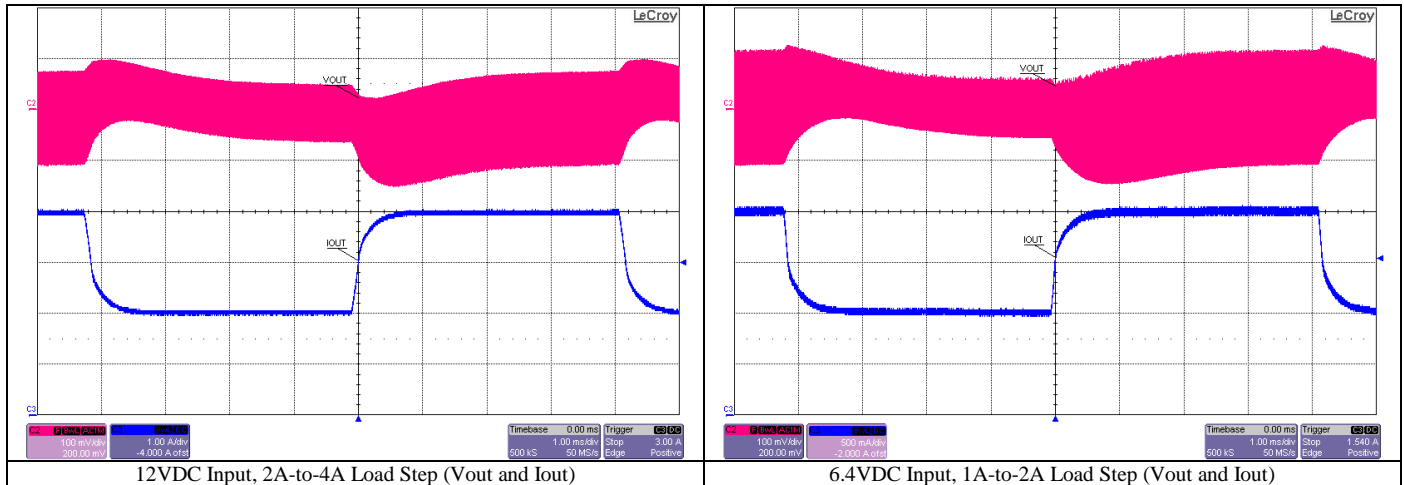
8.2 Short Circuit Test



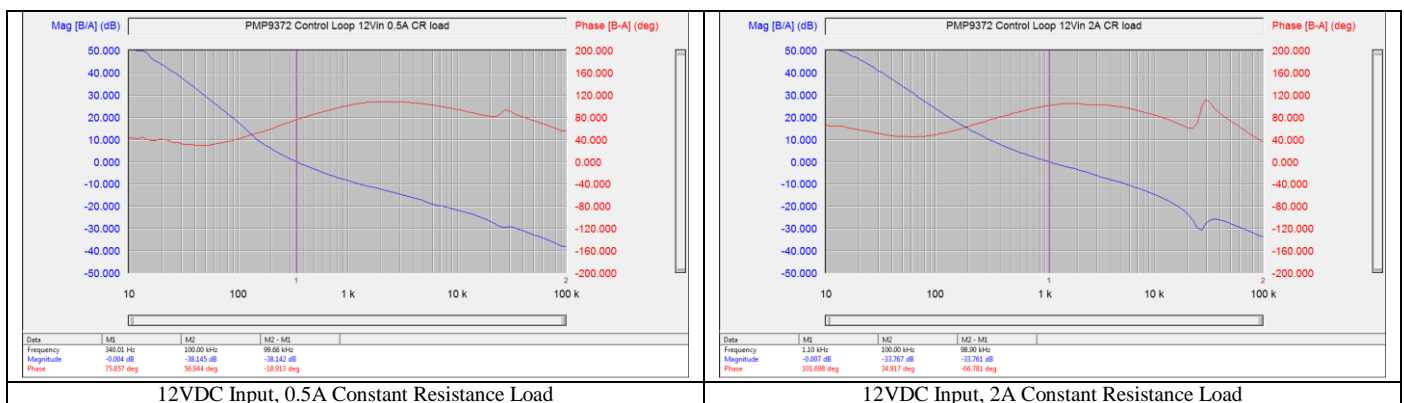
8.3 Startup into Short Circuit



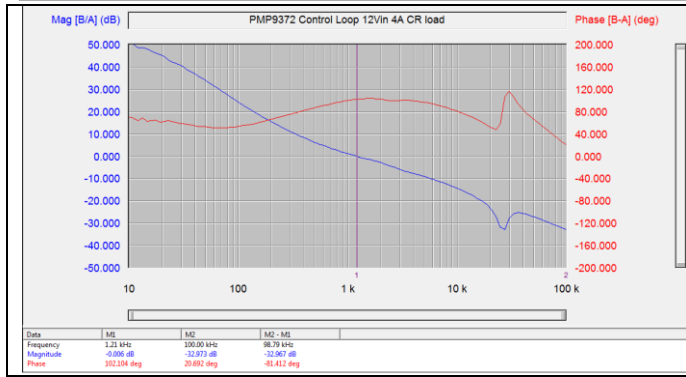
9 Load Transient Response



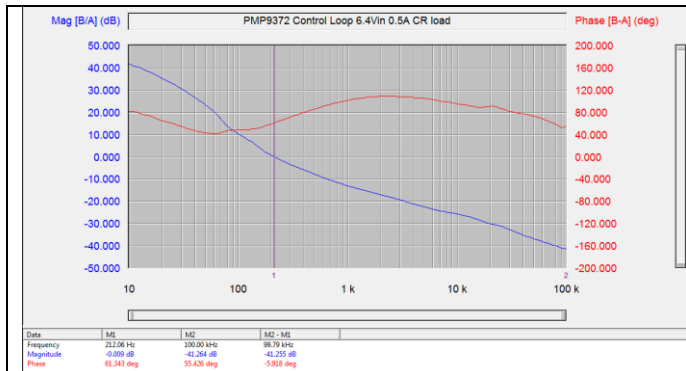
10 Control Loop Frequency Response



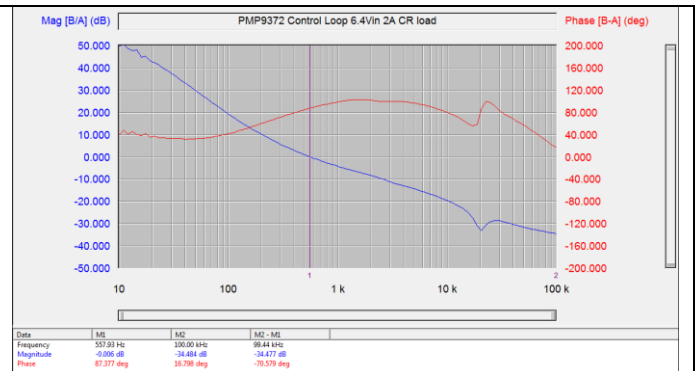
PMP9372 Test Results



12VDC Input, 4A Constant Resistance Load



6.4VDC Input, 0.5A Constant Resistance Load



6.4VDC Input, 2A Constant Resistance Load

11 Output Over-Voltage and Under-Voltage Power Good

Condition	Voltage (V)
Under-Voltage Falling Threshold	14.22
Under-Voltage Rising Threshold	14.42
Over-Voltage Rising Threshold	16.62
Over-Voltage Falling Threshold	16.40

IMPORTANT NOTICE FOR TI REFERENCE DESIGNS

Texas Instruments Incorporated ("TI") reference designs are solely intended to assist designers ("Buyers") who are developing systems that incorporate TI semiconductor products (also referred to herein as "components"). Buyer understands and agrees that Buyer remains responsible for using its independent analysis, evaluation and judgment in designing Buyer's systems and products.

TI reference designs have been created using standard laboratory conditions and engineering practices. **TI has not conducted any testing other than that specifically described in the published documentation for a particular reference design.** TI may make corrections, enhancements, improvements and other changes to its reference designs.

Buyers are authorized to use TI reference designs with the TI component(s) identified in each particular reference design and to modify the reference design in the development of their end products. HOWEVER, NO OTHER LICENSE, EXPRESS OR IMPLIED, BY ESTOPPEL OR OTHERWISE TO ANY OTHER TI INTELLECTUAL PROPERTY RIGHT, AND NO LICENSE TO ANY THIRD PARTY TECHNOLOGY OR INTELLECTUAL PROPERTY RIGHT, IS GRANTED HEREIN, including but not limited to any patent right, copyright, mask work right, or other intellectual property right relating to any combination, machine, or process in which TI components or services are used. Information published by TI regarding third-party products or services does not constitute a license to use such products or services, or a warranty or endorsement thereof. Use of such information may require a license from a third party under the patents or other intellectual property of the third party, or a license from TI under the patents or other intellectual property of TI.

TI REFERENCE DESIGNS ARE PROVIDED "AS IS". TI MAKES NO WARRANTIES OR REPRESENTATIONS WITH REGARD TO THE REFERENCE DESIGNS OR USE OF THE REFERENCE DESIGNS, EXPRESS, IMPLIED OR STATUTORY, INCLUDING ACCURACY OR COMPLETENESS. TI DISCLAIMS ANY WARRANTY OF TITLE AND ANY IMPLIED WARRANTIES OF MERCHANTABILITY, FITNESS FOR A PARTICULAR PURPOSE, QUIET ENJOYMENT, QUIET POSSESSION, AND NON-INFRINGEMENT OF ANY THIRD PARTY INTELLECTUAL PROPERTY RIGHTS WITH REGARD TO TI REFERENCE DESIGNS OR USE THEREOF. TI SHALL NOT BE LIABLE FOR AND SHALL NOT DEFEND OR INDEMNIFY BUYERS AGAINST ANY THIRD PARTY INFRINGEMENT CLAIM THAT RELATES TO OR IS BASED ON A COMBINATION OF COMPONENTS PROVIDED IN A TI REFERENCE DESIGN. IN NO EVENT SHALL TI BE LIABLE FOR ANY ACTUAL, SPECIAL, INCIDENTAL, CONSEQUENTIAL OR INDIRECT DAMAGES, HOWEVER CAUSED, ON ANY THEORY OF LIABILITY AND WHETHER OR NOT TI HAS BEEN ADVISED OF THE POSSIBILITY OF SUCH DAMAGES, ARISING IN ANY WAY OUT OF TI REFERENCE DESIGNS OR BUYER'S USE OF TI REFERENCE DESIGNS.

TI reserves the right to make corrections, enhancements, improvements and other changes to its semiconductor products and services per JESD46, latest issue, and to discontinue any product or service per JESD48, latest issue. Buyers should obtain the latest relevant information before placing orders and should verify that such information is current and complete. All semiconductor products are sold subject to TI's terms and conditions of sale supplied at the time of order acknowledgment.

TI warrants performance of its components to the specifications applicable at the time of sale, in accordance with the warranty in TI's terms and conditions of sale of semiconductor products. Testing and other quality control techniques for TI components are used to the extent TI deems necessary to support this warranty. Except where mandated by applicable law, testing of all parameters of each component is not necessarily performed.

TI assumes no liability for applications assistance or the design of Buyers' products. Buyers are responsible for their products and applications using TI components. To minimize the risks associated with Buyers' products and applications, Buyers should provide adequate design and operating safeguards.

Reproduction of significant portions of TI information in TI data books, data sheets or reference designs is permissible only if reproduction is without alteration and is accompanied by all associated warranties, conditions, limitations, and notices. TI is not responsible or liable for such altered documentation. Information of third parties may be subject to additional restrictions.

Buyer acknowledges and agrees that it is solely responsible for compliance with all legal, regulatory and safety-related requirements concerning its products, and any use of TI components in its applications, notwithstanding any applications-related information or support that may be provided by TI. Buyer represents and agrees that it has all the necessary expertise to create and implement safeguards that anticipate dangerous failures, monitor failures and their consequences, lessen the likelihood of dangerous failures and take appropriate remedial actions. Buyer will fully indemnify TI and its representatives against any damages arising out of the use of any TI components in Buyer's safety-critical applications.

In some cases, TI components may be promoted specifically to facilitate safety-related applications. With such components, TI's goal is to help enable customers to design and create their own end-product solutions that meet applicable functional safety standards and requirements. Nonetheless, such components are subject to these terms.

No TI components are authorized for use in FDA Class III (or similar life-critical medical equipment) unless authorized officers of the parties have executed an agreement specifically governing such use.

Only those TI components that TI has specifically designated as military grade or "enhanced plastic" are designed and intended for use in military/aerospace applications or environments. Buyer acknowledges and agrees that any military or aerospace use of TI components that have **not** been so designated is solely at Buyer's risk, and Buyer is solely responsible for compliance with all legal and regulatory requirements in connection with such use.

TI has specifically designated certain components as meeting ISO/TS16949 requirements, mainly for automotive use. In any case of use of non-designated products, TI will not be responsible for any failure to meet ISO/TS16949.