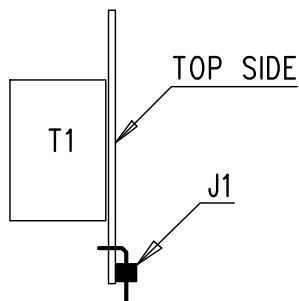
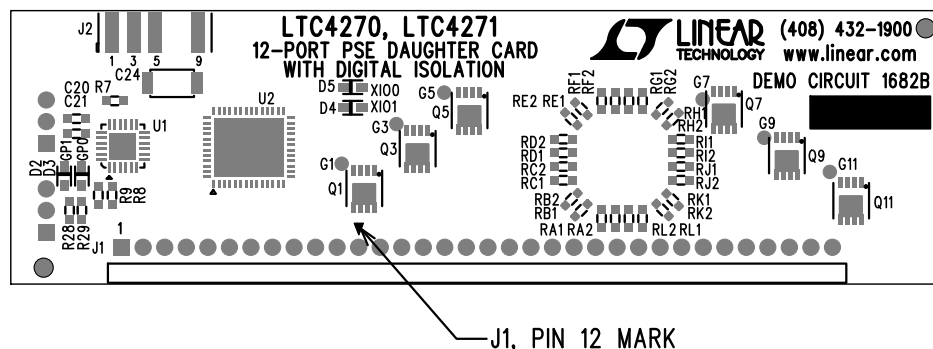
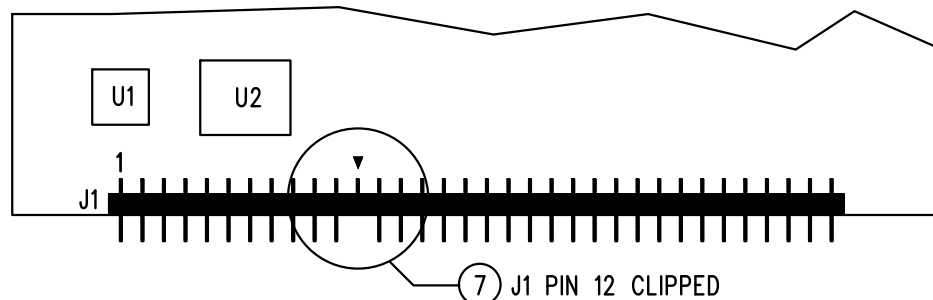



REVISION HISTORY				
ECO	REV	DESCRIPTION	APP. ENG.	DATE
-	1	REBUILD WITH CHANGE	DILIAN R.	01-30-15



## NOTES: UNLESS OTHERWISE SPECIFIED

1. WORKMANSHIP SHALL BE IN ACCORDANCE WITH IPC-A-610.
2. ASSEMBLY PROCESS SHALL INCLUDE: REFLOW SOLDER TOP SIDE SMD. MAXIMUM SOLDER TEMPERATURE IS 240 DEGREES CELSIUS.
3. PARTS TO OMIT WILL BE SPECIFIED ON THE BILL OF MATERIALS. LOCATIONS OF OMITTED PARTS SHALL BE FREE OF SOLDER. MASK THE SOLDER STENCIL WHERE SMT PARTS ARE OMITTED.
4. INSTALL SHUNTS AS SHOWN ON ASSY DRAWING.
5. DEPANELIZE BOARDS AFTER ASSEMBLY AND ROUTE-OUT THE BREAKOUT TABS ON FOUR SIDES OF THE BOARD EDGE.
6. DO NOT APPLY ANY KIND OF ASSEMBLY STAMP OR QA STAMP TO ANY BOARD.
7. J1 PIN 12 NEED TO BE CLIPPED AS SHOWN.

APPROVALS		 <div> 1630 MCCARTHY BLVD  MILPITAS, CA 95035  PH: (408)432-1900  www.linear.com  LTC CONFIDENTIAL-  FOR CUSTOMER USE ONLY </div>		
PCB DES.	KIM T.			
APP ENG.	DILIAN R.			
		TITLE: TOP ASSEMBLY DRAWING 12-PORT PSE DAUGHTER CARD WITH DIGITAL ISOLATION		
		SIZE N/A	IC NO. LTC4270BIUKG, LTC4271IUF DEMO CIRCUIT 1682B	REV. 1
SCALE = NONE		FILENAME: DC1682B-1.PCB		SHT 1 OF 2