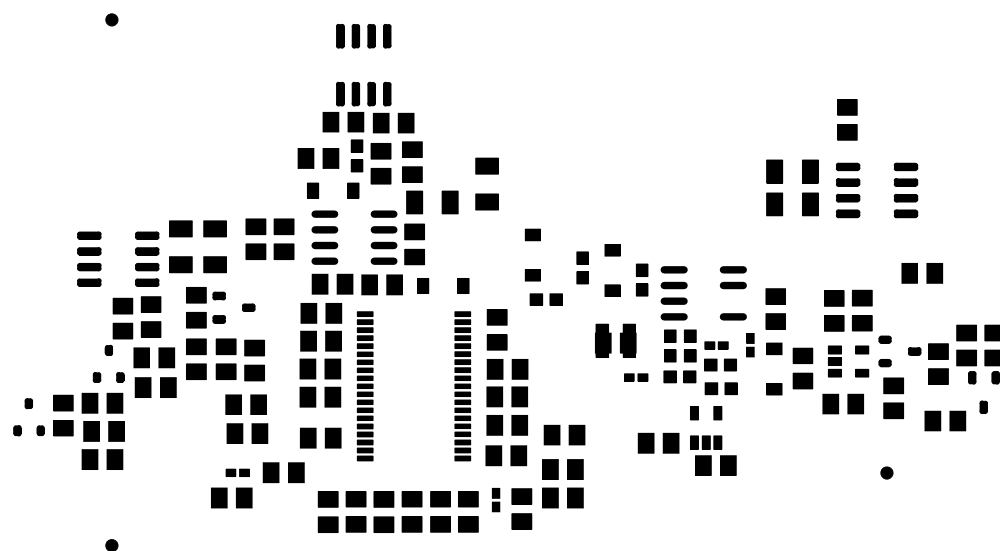


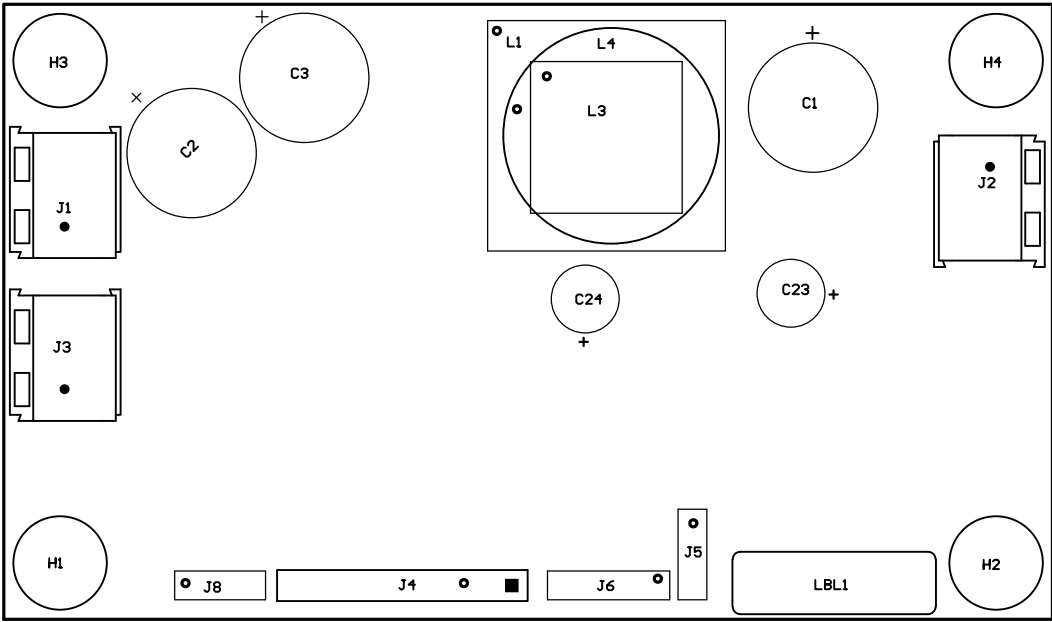


ALL ARTWORK VIEWED FROM TOP SIDE	BOARD #: TIDA-00476	REV: E1	SUN REV: Not In VersionControl
LAYER NAME= Top Paste			
PLOT NAME=TIDA-00476_E1.GTP	GENERATED : 9/8/2015	3:05:13 PM	TEXAS INSTRUMENTS



ALL ARTWORK VIEWED FROM TOP SIDE	BOARD #: TIDA-00476	REV: E1	SUN REV: Not In VersionControl
LAYER NAME= Bottom Paste			
PLOT NAME=TIDA-00476_E1.GBP	GENERATED : 9/8/2015	3:05:14 PM	TEXAS INSTRUMENTS

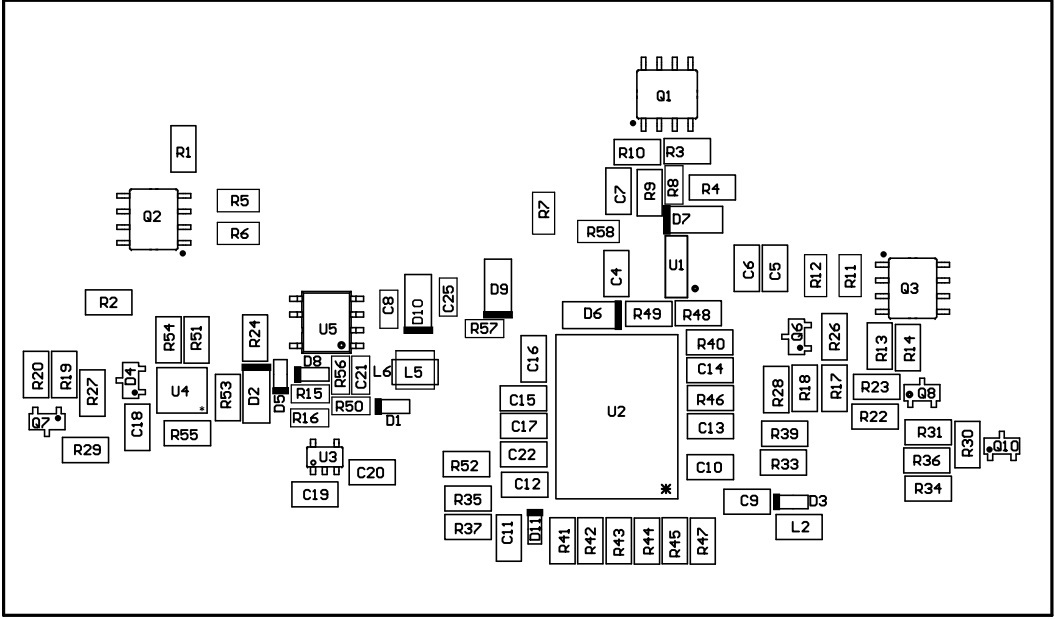
- ZZ1 ■ Install label in silkscreened box after final wash. Text shall be 8 pt font. Text shall be per the Label Table in the PDF schematic.
- ZZ2 ■ These assemblies are ESD sensitive, ESD precautions shall be observed.
- ZZ3 ■ These assemblies must be clean and free from flux and all contaminants. Use of no clean flux is not acceptable.
- ZZ4 ■ These assemblies must comply with workmanship standards IPC-A-610 Class 2, unless otherwise specified.

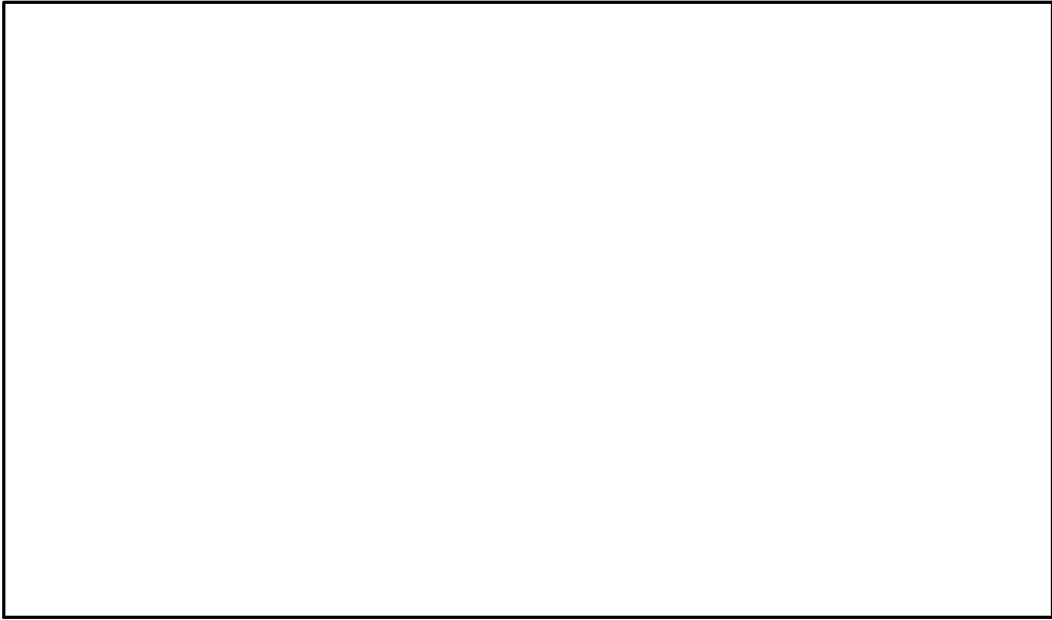


COMPONENTS MARKED 'DNP' SHOULD NOT BE POPULATED.
ASSEMBLY VARIANT: [No Variations]

PCB VIEWED FROM TOP SIDE	BOARD #: TIDA-00476	REV: E1	SVN REV: Not In VersionControl
LAYER NAME = M5 Assembly Top			
PLOT NAME=TIDA-00476_E1.GM5	GENERATED : 9/8/2015	3:02:47 PM	TEXAS INSTRUMENTS

ASSEMBLY VARIANT: [no variation]
COMPONENTS MARKED 'DIP' SHOULD NOT BE POPULATED.





ALL ARTWORK VIEWED FROM TOP SIDE	BOARD #: TIDA-00476	REV: E1	SUN REV: Not In VersionControl
LAYER NAME= M1 Board Outline			
PLOT NAME= TIDA-00476_E1.GM1	GENERATED	: 9/8/2015 3:01:51 PM	TEXAS INSTRUMENTS