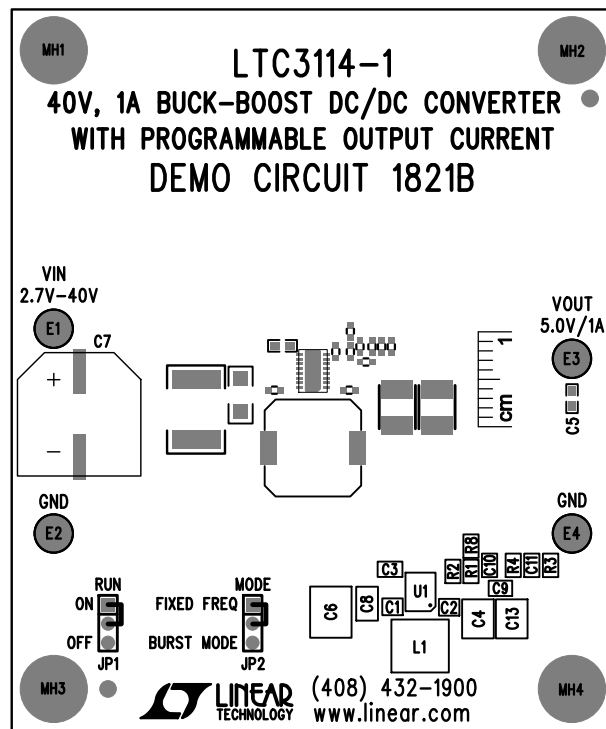
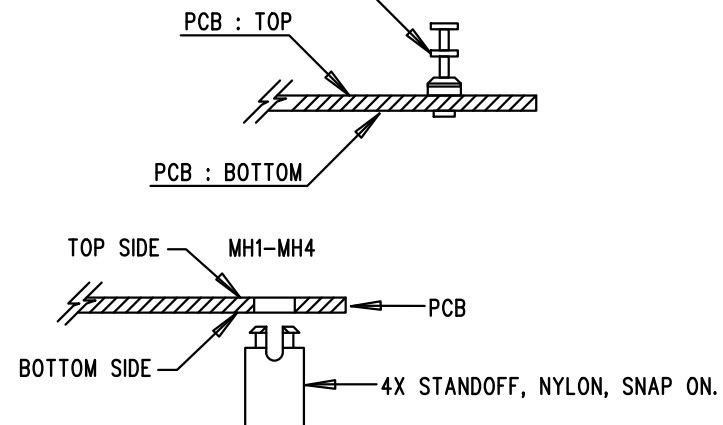



REVISION HISTORY				
ECO	REV	DESCRIPTION	APPR	DATE
-	1	PRODUCTION	J.NOON	11-7-15

NOTES: UNLESS OTHERWISE SPECIFIED

1. WORKMANSHIP SHALL BE IN ACCORDANCE WITH IPC-A-610.
2. ASSEMBLY PROCESS SHALL INCLUDE: REFLOW SOLDER TOP SIDE SMD. MAXIMUM SOLDER TEMPERATURE IS 240 DEGREES CELSIUS.
3. PARTS TO OMIT WILL BE SPECIFIED ON THE BILL OF MATERIALS. LOCATIONS OF OMITTED PARTS SHALL BE FREE OF SOLDER. MASK THE SOLDER STENCIL WHERE SMT PARTS ARE OMITTED.
4. INSTALL SHUNTS AS SHOWN ON ASSY DRAWING.
5. DEPANELIZE BOARDS AFTER ASSEMBLY AND ROUTE-OUT THE BREAKOUT TABS ON FOUR SIDES OF THE BOARD EDGE.
6. DO NOT APPLY ANY KIND OF ASSEMBLY STAMP OR QA STAMP TO ANY BOARD.
7. INSTALL TURRETS AND 4 STANDOFFS 4 LOCATIONS AS SHOWN BELOW:

(4 PLCS) : MILL-MAX 2501-2



APPROVALS		 LINEAR TECHNOLOGY 1630 MCCARTHY BLVD MILPITAS, CA 95035 PH: (408)432-1900 www.Linear.com LTC CONFIDENTIAL - FOR CUSTOMER USE ONLY	
PCB DES.	NC		
APP ENG.	J.NOON	TITLE: TOP ASSEMBLY DRAWING: 40V, 1A BUCK-BOOST DC/DC CONVERTER WITH PROGRAMMABLE OUTPUT CURRENT	
		SIZE	REV.
		N/A	1
SCALE = NONE		IC NO. LTC3114EDHC-1 DEMO CIRCUIT 1821B FILENAME: DC1821B-1.PCB SHT 1 of 2	