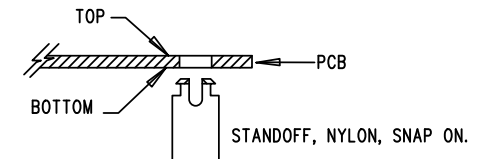


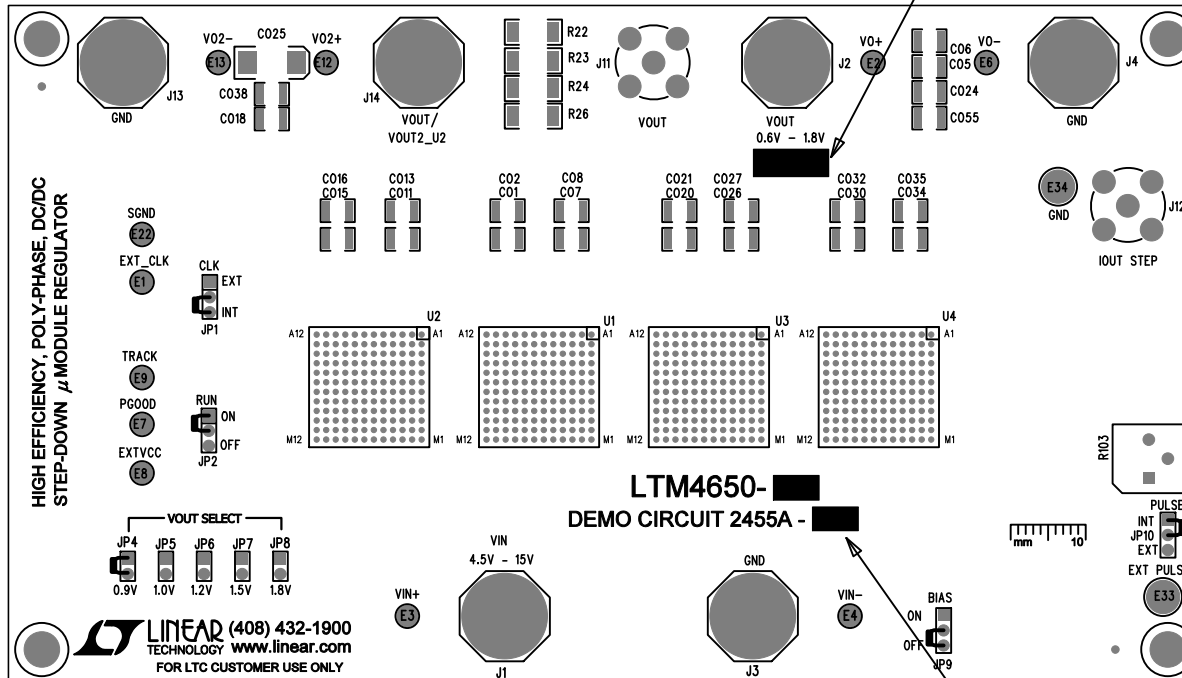
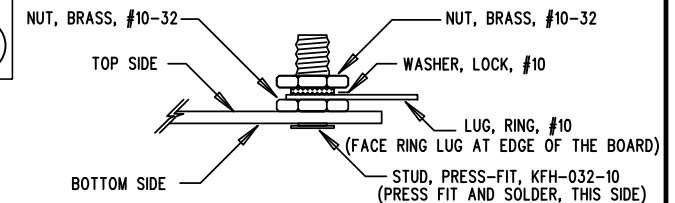
REVISION HISTORY				
ECO	REV	DESCRIPTION	APP. ENG.	DATE
-	1	PRODUCTION	JL	05-24-16

## NOTES: UNLESS OTHERWISE SPECIFIED

1. WORKMANSHIP SHALL BE IN ACCORDANCE WITH IPC-A-610.
2. ASSEMBLY PROCESS SHALL INCLUDE: REFLOW SOLDER TOP SIDE SMD. MAXIMUM SOLDER TEMPERATURE IS 240 DEGREES CELSIUS.
3. PARTS TO OMIT WILL BE SPECIFIED ON THE BILL OF MATERIALS. LOCATIONS OF OMITTED PARTS SHALL BE FREE OF SOLDER. MASK THE SOLDER STENCIL WHERE SMT PARTS ARE OMITTED.
4. INSTALL SHUNTS AS SHOWN ON ASSY DRAWING.
5. DEPANELIZE BOARDS AFTER ASSEMBLY AND ROUTE-OUT THE BREAKOUT TABS ON FOUR SIDES OF THE BOARD EDGE.
6. DO NOT APPLY ANY KIND OF ASSEMBLY STAMP OR QA STAMP TO ANY BOARD.
7. INSTALL 4 STANDOFFS AS SHOWN.



8 MARK ASSEMBLY TYPE AND VOUT CURRENT WITH BLACK PERMANENT MARKER BASED ON THE TABLE BELOW:



ASSY	IC	Iout	R13	R34	Cin12,13,14,15	Cin16,17,18,19	Cout20,21,26,27 Cout33,36,52,54	Cout22,28,30,32 Cout34,35,48,50
-A	U1,U2	100A	OPT	OPT	OPT	OPT	OPT	OPT
-B	U1,U2,U3	150A	0	0	22uF	OPT	100uF	OPT
-C	U1,U2,U3,U4	200A	OPT	0	22uF	22uF	100uF	100uF

APPROVALS		LINEAR TECHNOLOGY		
PCB DES.	LT	1630 MCCARTHY BLVD MILPITAS, CA 95035 PH: (408)432-1900 www.linear.com LTC CONFIDENTIAL - FOR CUSTOMER USE ONLY		
APP ENG.	JL			
		TITLE: TOP ASSEMBLY DRAWING HIGH EFFICIENCY, POLY-PHASE, DC/DC STEP-DOWN μMODULE REGULATOR		
		SIZE	IC NO. LTM4650EY-1	REV. 1
		N/A	DEMO CIRCUIT 2455A	
SCALE = NONE		FILENAME: DC2455A-1.PCB		SHT 1 OF 2