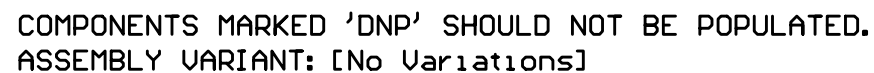


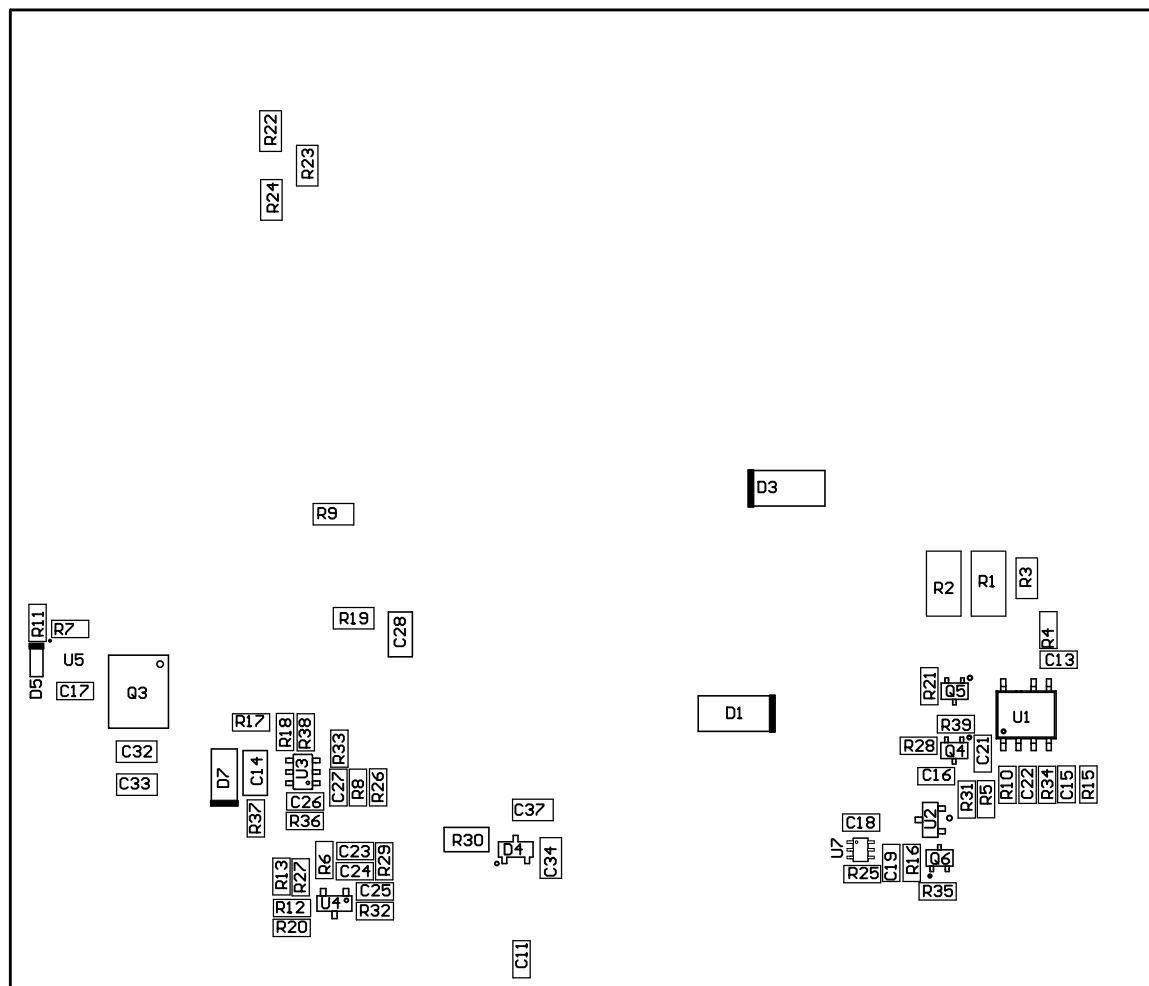


ALL ARTWORK VIEWED FROM TOP SIDE	BOARD #: TIDA-00702	REV: RevB	SUN REV: Not In VersionControl
LAYER NAME = Bottom Paste			
PLOT NAME = TIDA-00702-RevB.GBP	GENERATED : 12/3/2015 2:13:27 PM		TEXAS INSTRUMENTS

ZZ4 ■ These assemblies must comply with workmanship standards IPC-A-610 Class 2, unless otherwise specified.

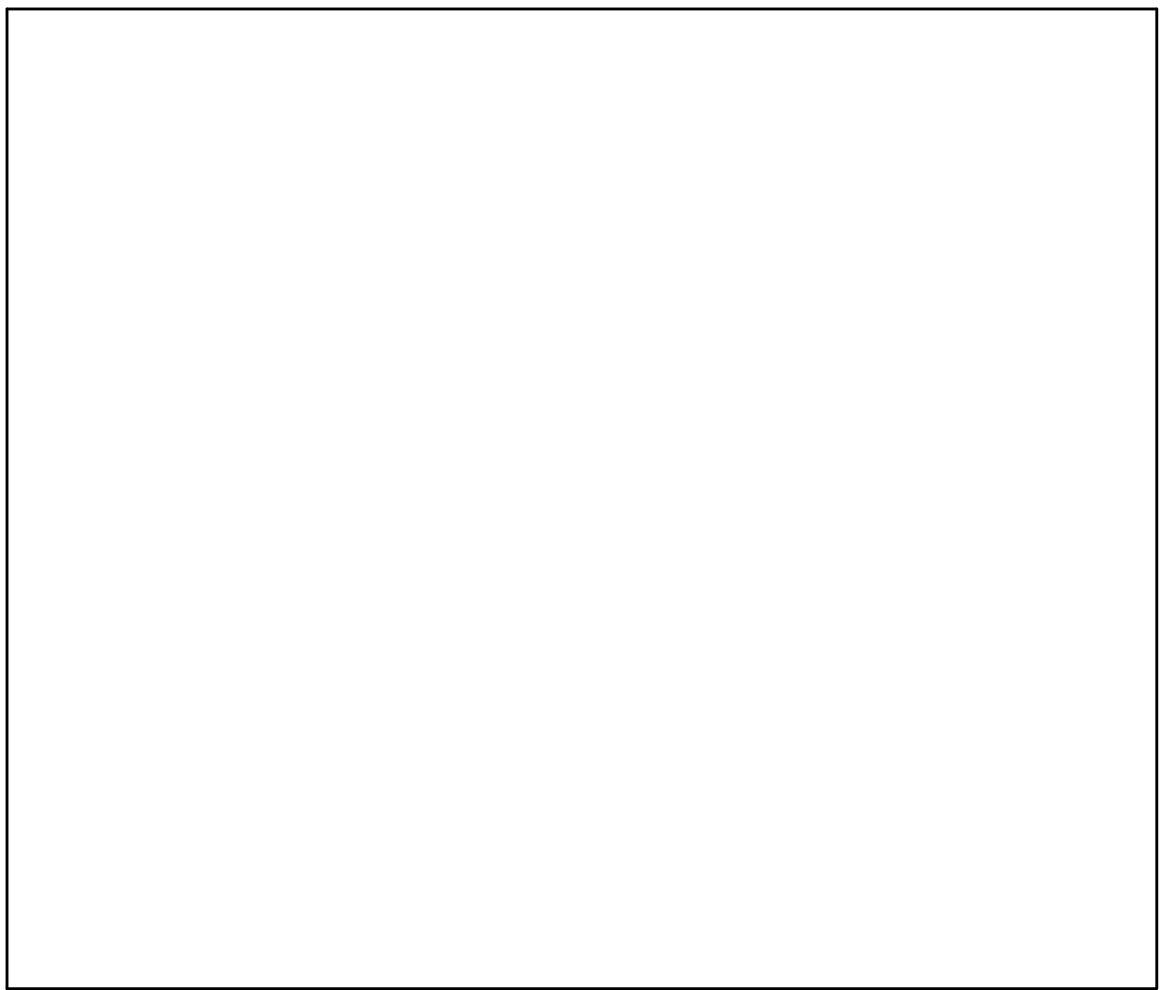


PCB VIEWED FROM TOP SIDE	BOARD #: TIDA-00702	REV: RevB	SUN REV: Not In VersionControl
IGNORE -> M5 Assembly Top			
PLOT NAME = TIDA-00702-RevB.GM5	GENERATED : 12/3/2015 4:19:12 PM		TEXAS INSTRUMENTS



COMPONENTS MARKED 'DNP' SHOULD NOT BE POPULATED.
 ASSEMBLY VARIANT: [No Variations]

PCB VIEWED FROM BOTTOM SIDE	BOARD #: TIDA-00702	REV: RevB	SUN REV: Not In VersionControl
	IGNORE -> M6 Assembly Bottom		
PLOT NAME = TIDA-00702-RevB.GM6	GENERATED : 12/3/2015 2:14:28 PM	TEXAS INSTRUMENTS	



ALL ARTWORK VIEWED FROM TOP SIDE	BOARD #: TIDA-00702	REV: RevB	SUN REV: Not In VersionControl
LAYER NAME = M1 Board Outline			
PLOT NAME = TIDA-00702-RevB.GM1	GENERATED : 12/3/2015 2:13:27 PM		TEXAS INSTRUMENTS