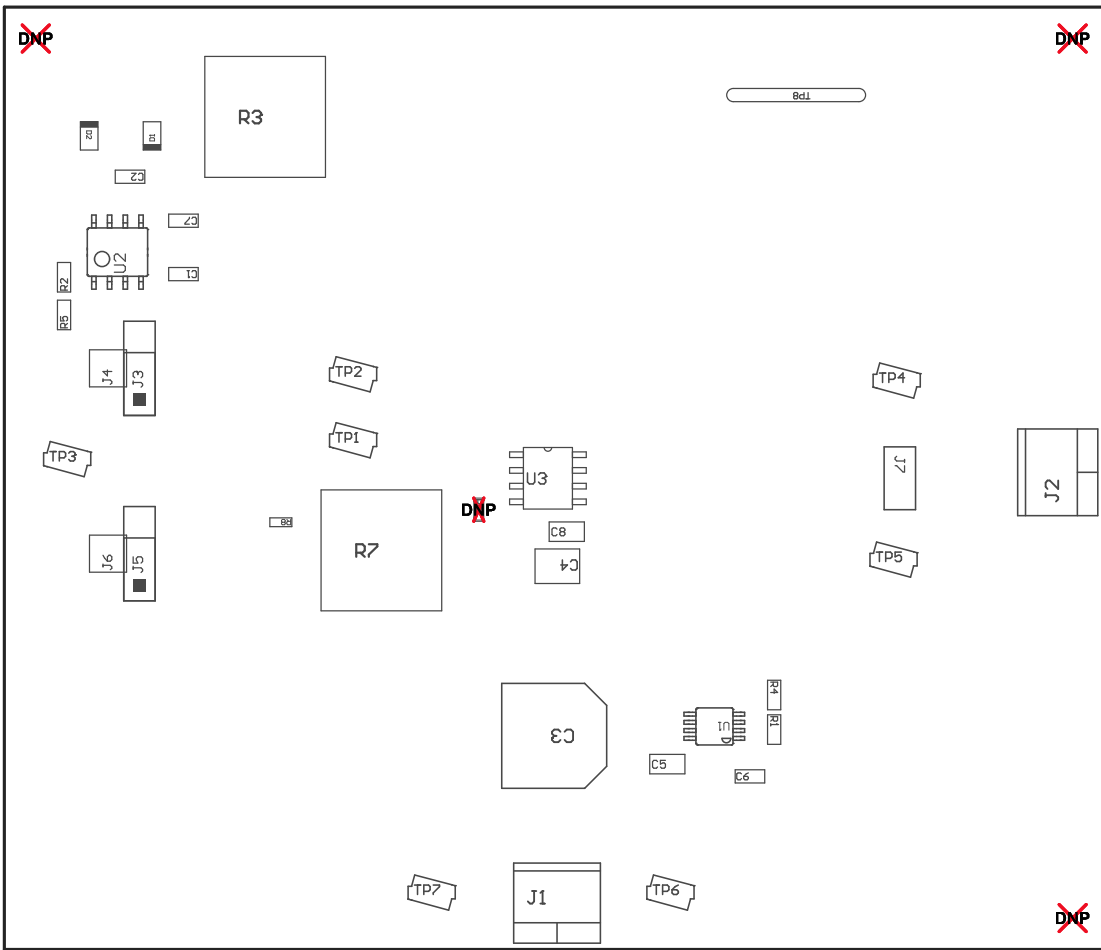


ZZ1 ■ These assemblies are ESD sensitive, ESD precautions shall be observed.

Z22 ■ These assemblies must be clean and free from flux and all contaminants. Use of no clean flux is not acceptable.

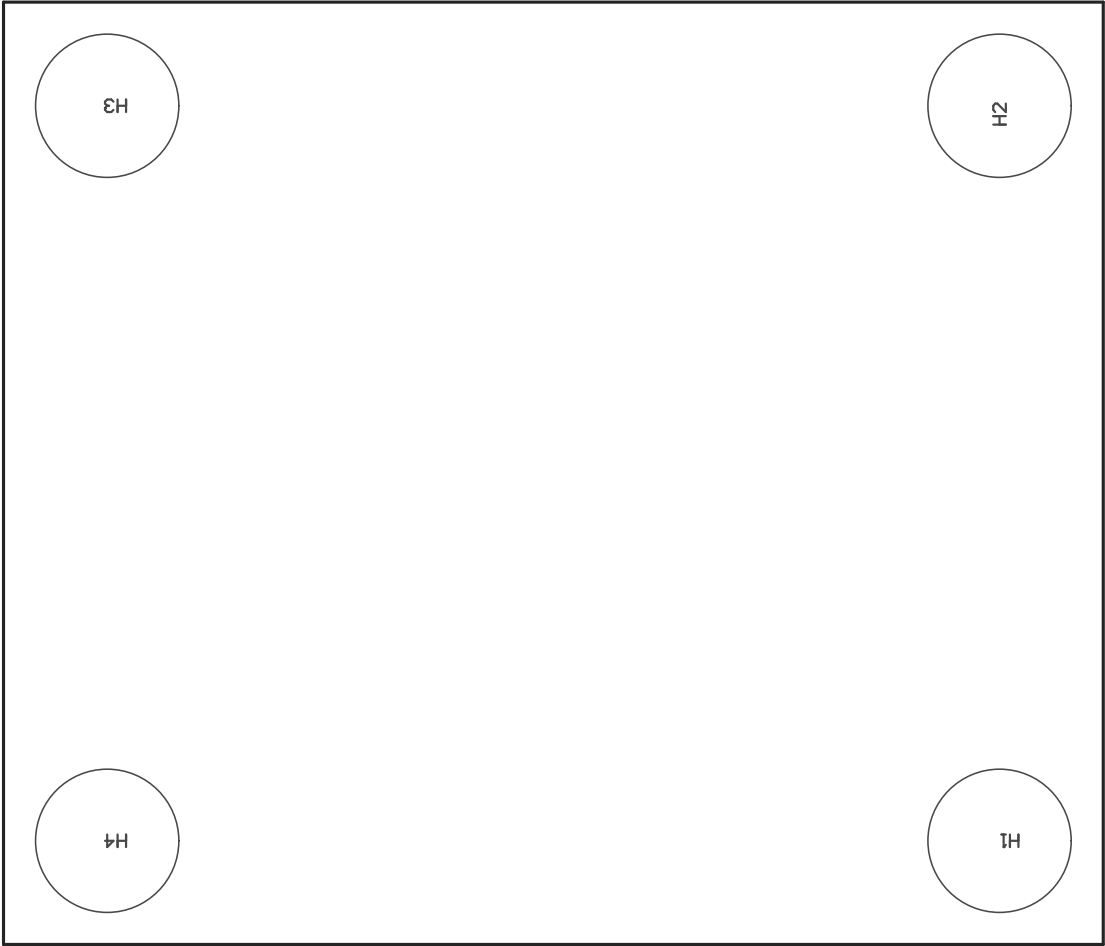
ZZ3 ■ These assemblies must comply with workmanship standards IPC-A-610 Class 2, unless otherwise specified.

ZZ4 ■ Shorting plug TP8 shall be raised to minimum height of 250mils above PCB



COMPONENTS MARKED 'DNP' SHOULD NOT BE POPULATED.
ASSEMBLY VARIANT: 001

PCB VIEWED FROM TOP SIDE	BOARD #: MDBU007	REV: A	SUN REV: Not In VersionControl
	TID #: N/A		
PLOT NAME = Top Assembly Drawing	GENERATED : 7/30/2015 2:25:08 PM		TEXAS INSTRUMENTS



COMPONENTS MARKED 'DNP' SHOULD NOT BE POPULATED.
ASSEMBLY VARIANT: 001

PCB VIEWED FROM BOTTOM SIDE	BOARD #: MDBU007	REV: A	SUN REV: Not In VersionControl
	TID #: N/A		
PLOT NAME = Bottom Assembly Drawing	GENERATED : 7/30/2015 2:25:08 PM		TEXAS INSTRUMENTS