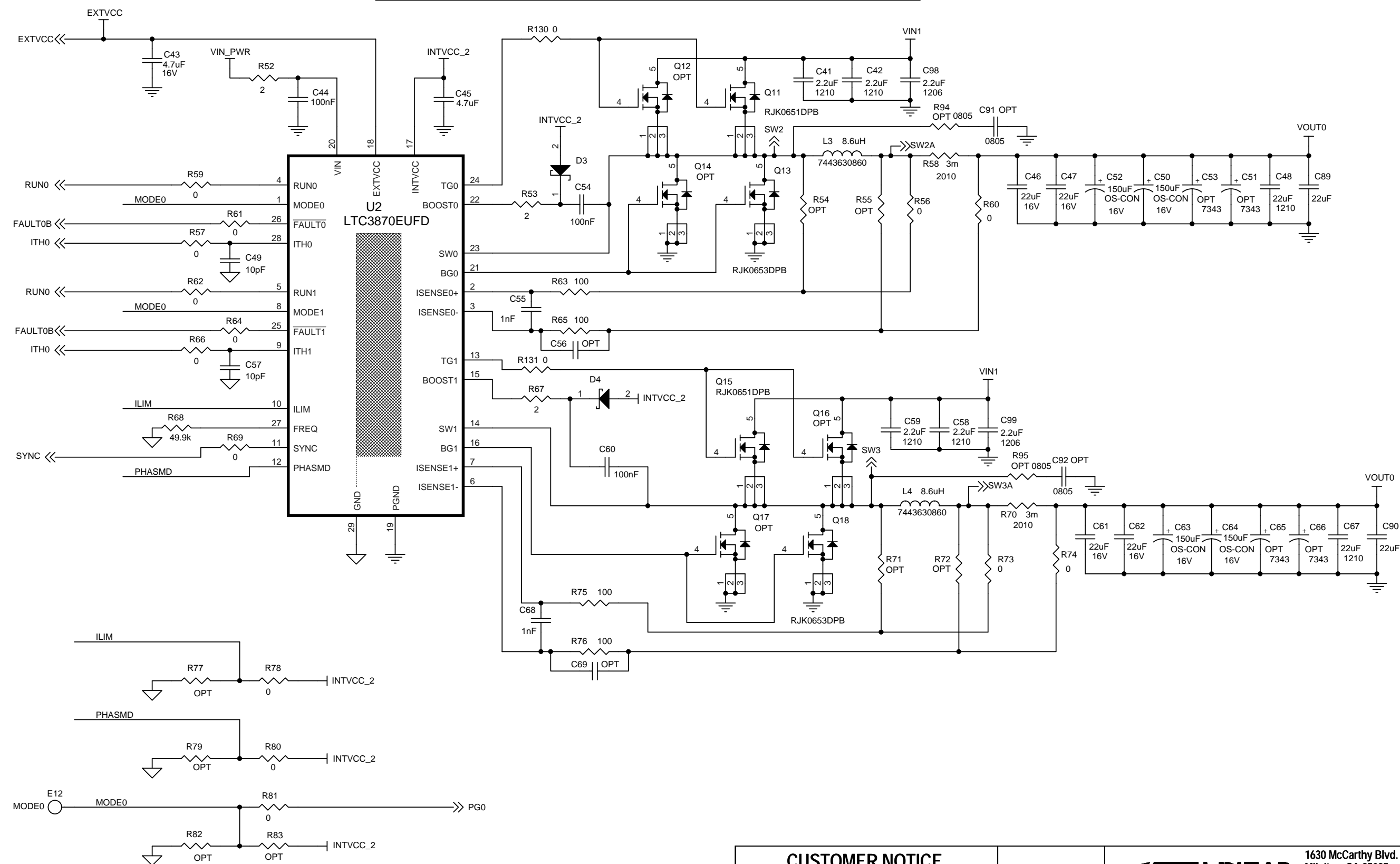
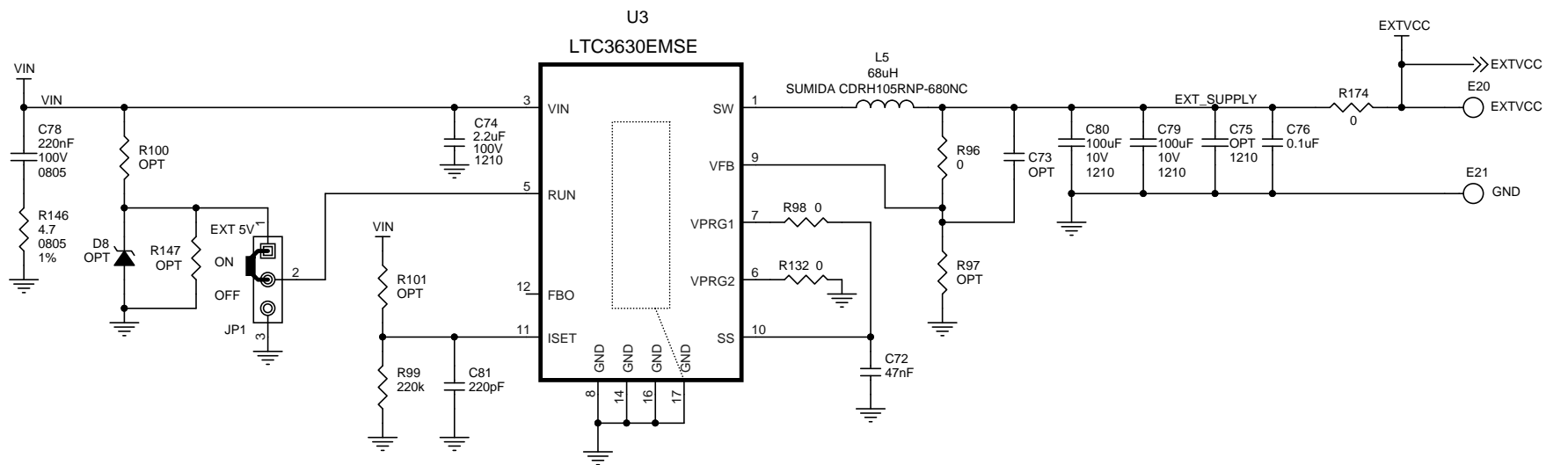
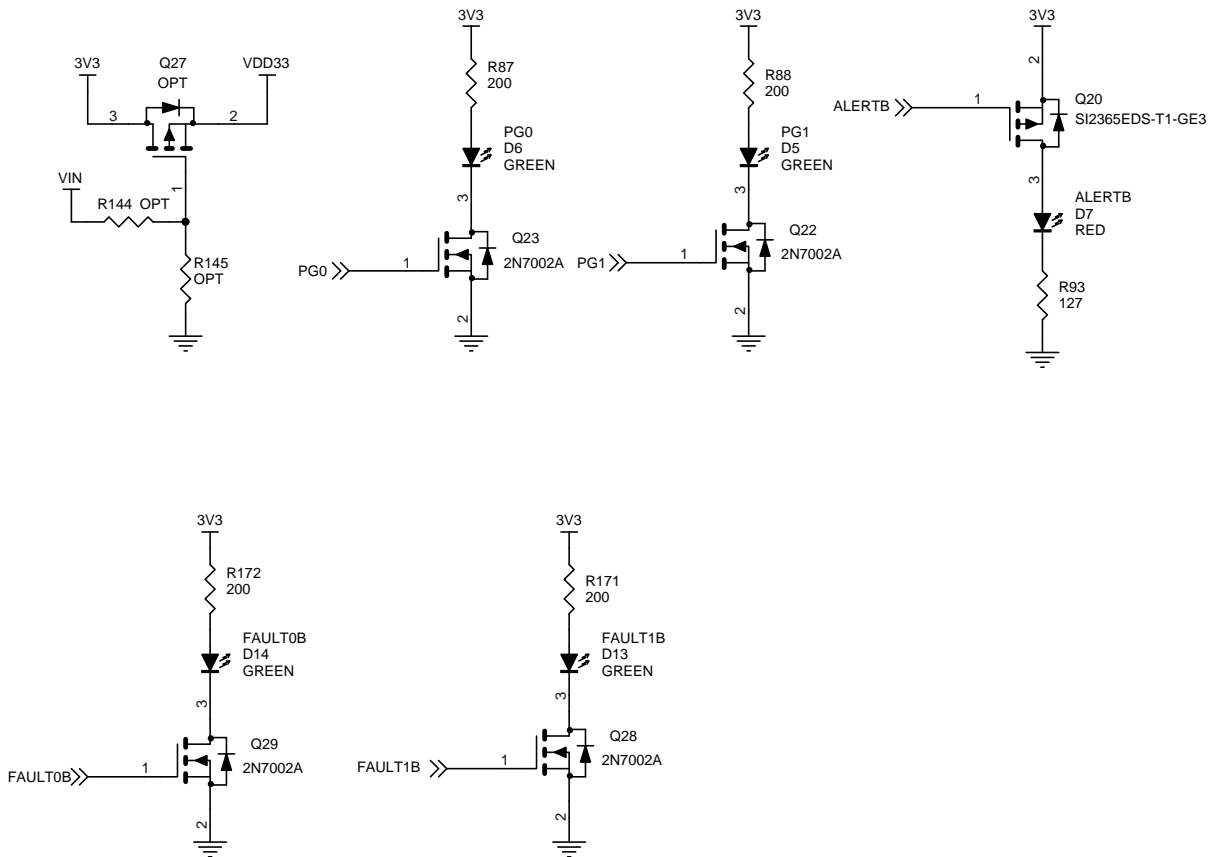
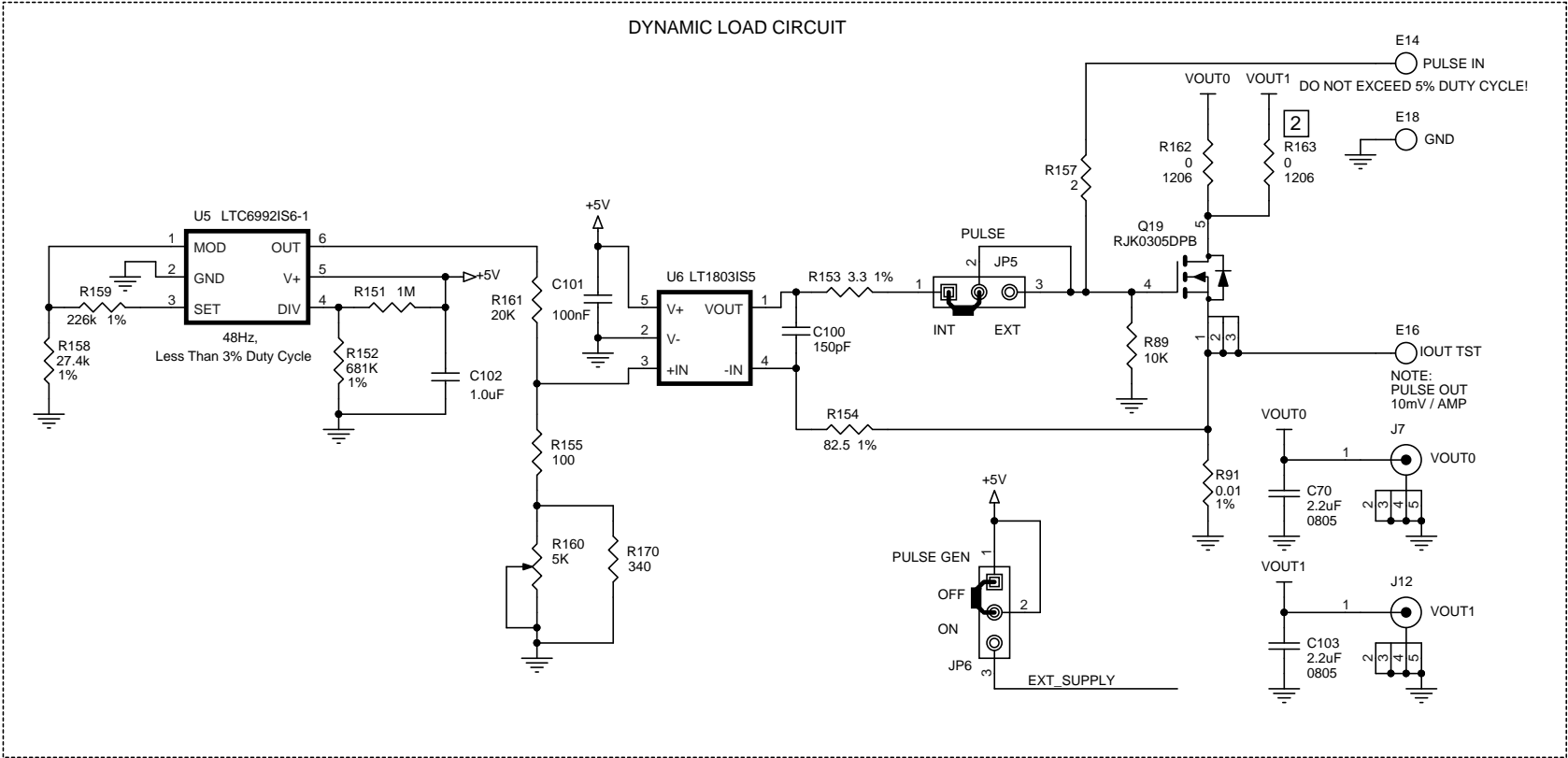


ALL PARTS ON THIS PAGE ARE, NOT STUFFED IN THE -A VERSION



CUSTOMER NOTICE		APPROVALS		LINEAR TECHNOLOGY	
LINEAR TECHNOLOGY HAS MADE A BEST EFFORT TO DESIGN A CIRCUIT THAT MEETS CUSTOMER-SUPPLIED SPECIFICATIONS; HOWEVER, IT REMAINS THE CUSTOMER'S RESPONSIBILITY TO VERIFY PROPER AND RELIABLE OPERATION IN THE ACTUAL APPLICATION. COMPONENT SUBSTITUTION AND PRINTED CIRCUIT BOARD LAYOUT MAY SIGNIFICANTLY AFFECT CIRCUIT PERFORMANCE OR RELIABILITY. CONTACT LINEAR TECHNOLOGY APPLICATIONS ENGINEERING FOR ASSISTANCE.		PCB DES.	<i>MS</i>	1630 McCarthy Blvd. Milpitas, CA 95035 Phone: (408)432-1900 <a href="http://www.linear.com">www.linear.com</a> Fax: (408)434-0507 LTC Confidential-For Customer Use Only	
		APP ENG.	<i>YS</i>		
THIS CIRCUIT IS PROPRIETARY TO LINEAR TECHNOLOGY AND SUPPLIED FOR USE WITH LINEAR TECHNOLOGY PARTS.		SCALE = NONE		TITLE: SCHEMATIC HIGH VOLTAGE DUAL STEP-DOWN DC/DC CONVERTER WITH POWER SYSTEM MANAGEMENT	
		SIZE N/A	IC NO. LTC3886IUKG DEMO CIRCUIT 2155A-B	REV. 4	
		DATE: Friday, January 08, 2016		SHEET 2 OF 4	

ALL PARTS ON THIS PAGE ARE FOR DEMO ONLY, NOT NEEDED IN CUSTOMER DESIGN



## CUSTOMER NOTICE

LINEAR TECHNOLOGY HAS MADE A BEST EFFORT TO DESIGN A CIRCUIT THAT MEETS CUSTOMER-SUPPLIED SPECIFICATIONS; HOWEVER, IT REMAINS THE CUSTOMER'S RESPONSIBILITY TO VERIFY PROPER AND RELIABLE OPERATION IN THE ACTUAL APPLICATION. COMPONENT SUBSTITUTION AND PRINTED CIRCUIT BOARD LAYOUT MAY SIGNIFICANTLY AFFECT CIRCUIT PERFORMANCE OR RELIABILITY. CONTACT LINEAR TECHNOLOGY APPLICATIONS ENGINEERING FOR ASSISTANCE.

THIS CIRCUIT IS PROPRIETARY TO LINEAR TECHNOLOGY AND  
SUPPLIED FOR USE WITH LINEAR TECHNOLOGY PARTS.

## APPROVALS

PCB DES.	<i>MS</i>
APP ENG.	<i>YS</i>

**SCALE = NONE**



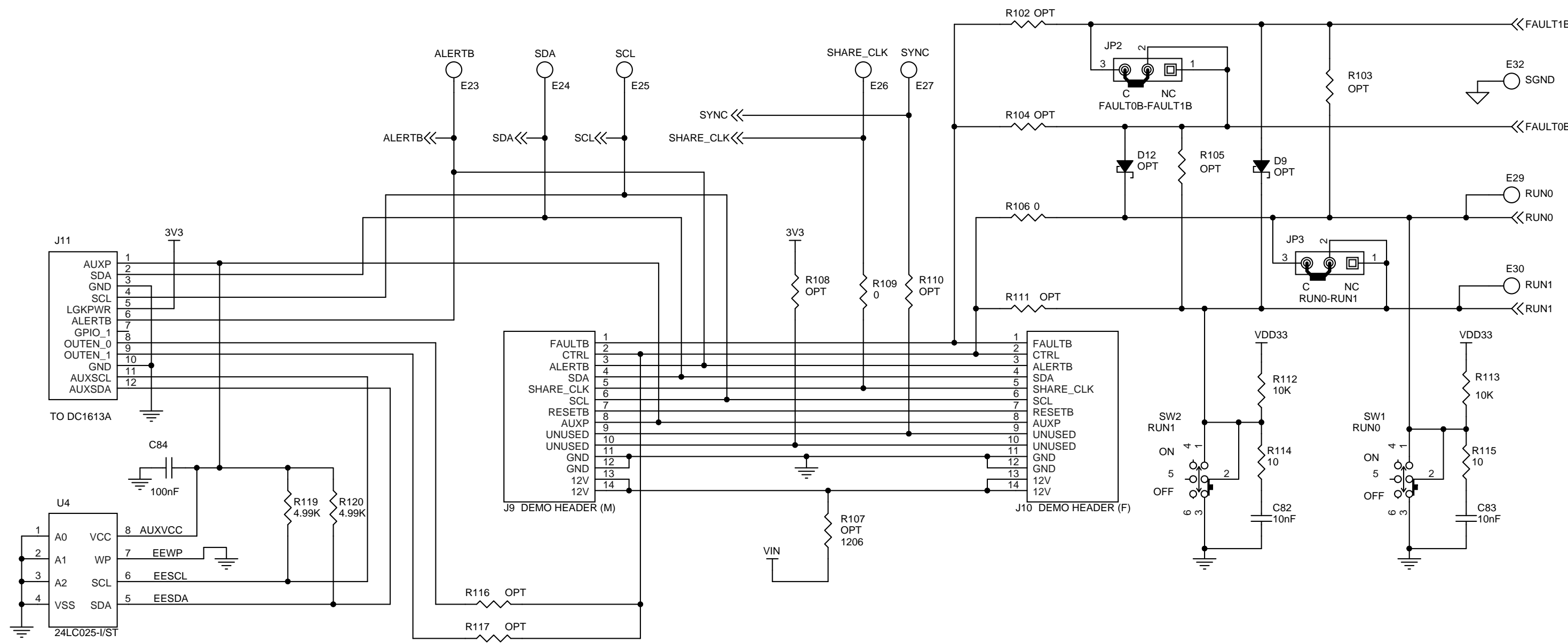
1630 McCarthy Blvd.  
Milpitas, CA 95035  
Phone: (408)432-1900 [www.linear.com](http://www.linear.com)  
Fax: (408)434-0507  
LTC Confidential-For Customer Use Only


TITLE: SCHEMATIC  
HIGH VOLTAGE DUAL STEP-DOWN DC/DC CONVERTER  
WITH POWER SYSTEM MANAGEMENT

SIZE N/A	IC NO. LTC3886IUKG DEMO CIRCUIT 2155A-B	REV. 4
-------------	--------------------------------------------	-----------

DATE: Friday, January 08, 2016	SHEET 3 OF 4
--------------------------------	--------------

ALL PARTS ON THIS PAGE ARE FOR DEMO ONLY, NOT NEEDED IN CUSTOMER DESIGN



<b>CUSTOMER NOTICE</b> LINEAR TECHNOLOGY HAS MADE A BEST EFFORT TO DESIGN A CIRCUIT THAT MEETS CUSTOMER-SUPPLIED SPECIFICATIONS; HOWEVER, IT REMAINS THE CUSTOMER'S RESPONSIBILITY TO VERIFY PROPER AND RELIABLE OPERATION IN THE ACTUAL APPLICATION. COMPONENT SUBSTITUTION AND PRINTED CIRCUIT BOARD LAYOUT MAY SIGNIFICANTLY AFFECT CIRCUIT PERFORMANCE OR RELIABILITY. CONTACT LINEAR TECHNOLOGY APPLICATIONS ENGINEERING FOR ASSISTANCE.		<b>APPROVALS</b>		 1630 McCarthy Blvd. Milpitas, CA 95035 Phone: (408)432-1900 <a href="http://www.linear.com">www.linear.com</a> Fax: (408)434-0507 LTC Confidential-For Customer Use Only		
		PCB DES.	<i>MS</i>			
		APP ENG.	<i>YS</i>	<b>TITLE: SCHEMATIC</b> <b>HIGH VOLTAGE DUAL STEP-DOWN DC/DC CONVERTER WITH POWER SYSTEM MANAGEMENT</b>		
THIS CIRCUIT IS PROPRIETARY TO LINEAR TECHNOLOGY AND SUPPLIED FOR USE WITH LINEAR TECHNOLOGY PARTS.		SCALE = NONE		SIZE N/A	IC NO. <b>LTC3886IUKG</b>	REV. <b>4</b>
				<b>DEMO CIRCUIT 2155A-B</b>		
DATE: Friday, January 08, 2016				SHEET 4 OF 4		