

# LT8331

HIGH VOLTAGE, 0.5A BOOST/FLYBACK/SEPIC  
INVERTING CONVERTER  
DEMO CIRCUIT 2275A

EN/UVLO

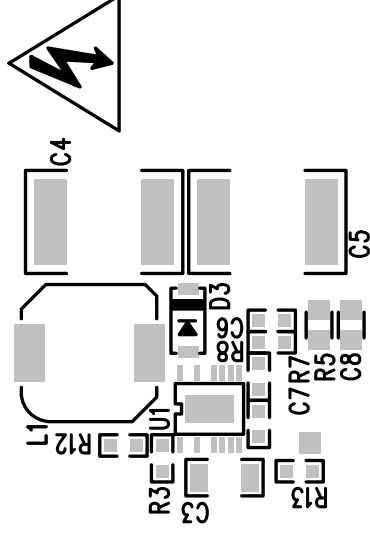
E5

VIN  
10V-48V

E1

GND

E2



VOUT

E6

120V\*

E7

GND

\*

VIN	IOUT
10V	25mA
12V	30mA
24V	55mA
36V	70mA
48V	80mA

**LINEAR** TECHNOLOGY  
www.linear.com/8331  
(408) 432-1900

E3

R6

SYNC

E4

GND

TOP SILKSCREEN  
LINEAR TECHNOLOGY  
DC2275A-2, 8-24-15