

REV	COMMENTS	DATE
2.1	Full Production Release	02/01/06

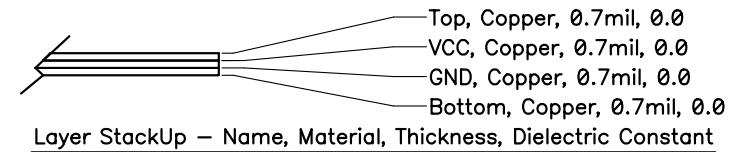
MATERIAL: Isola IS410 FR-4 or Equivalent

THICKNESS: 0.062" +/- 0.005"

PLATING: 1 OZ. COPPER

LAYER COUNT: 4

CONTROLLED IMPEDENCE: NO



FINISH:

SOLDERMASK OVER BARE COPPER (SMOBC) with ENTEK

SOLDERMASK TYPE: DYNACHEM EPIC 200 LPI OR EQUIVALENT.

SOLDERMASK COLOR: DB6500 BLUE

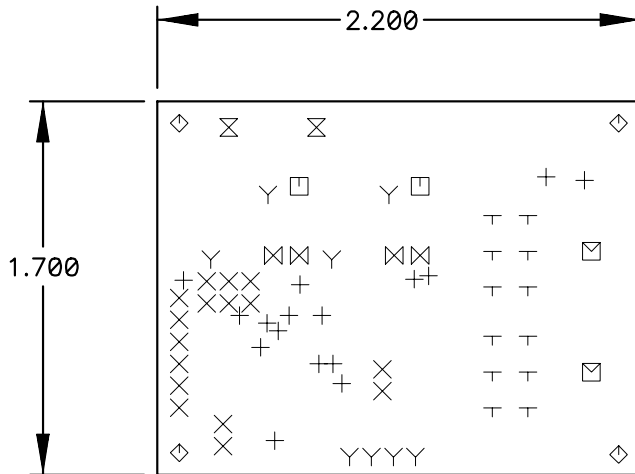
SILKSCREEN COLOR: YELLOW INK

USE ARTWORK SET NUMBER: 05-01892R2.1 REVISION: 2.1


ANY ALTERNATIVES TO THE ABOVE SPECIFICATIONS MUST BE APPROVED BY THE ENGINEERING DEPARTMENT AT MICROCHIP.

THIS PCB TO BE MANUFACTURED TO MEET ALL ACCEPTANCE LEVELS OF A CLASS 2 PCB PER ANSI/IPC-A-600F.

ALL DIMENSIONS ARE IN INCHES.



Drill Table			
Hole Dia (inch)	Symbol	Quantity	Plated
0.018	+	16	Yes
0.042	X	16	Yes
0.046	Y	8	Yes
0.055	τ	12	Yes
0.065	Σ	2	Yes
0.069	⊠	4	Yes
0.073	□	2	Yes
0.125	◇	4	Yes
0.152	⊞	2	Yes

Title: Window Lift Module		
Size A	 04-01892 MICROCHIP	Rev 2.1
Date: 2/1/2006		Eng Chuck Simmers
Filename: 05-01892R2.1.pcb		Drawn by Chuck Simmers
Sheet: 1 of 1		