

1. Unless Otherwise Specified:
- All resistors are in ohms, 1% or 5%, 1/16 Watt
 - All capacitors are in uF, 10%, 50V
 - All voltages are DC
 - All polarized capacitors are aluminum electrolytic


2. Interrupted lines coded with the same letter or letter combinations are electrically connected.

3. Device type number is for reference only. The number varies with the manufacturer.

4. Special signal usage:
- _B Denotes - Active-Low Signal
 - <> or [] Denotes - Vectored Signals

5. Interpret diagram in accordance with American National Standards Institute specifications, current revision, with the exception of logic block symbology.

MCU Peripheral / Port Map		
Function	MCU Peri	MCU Port
PWM_AT	FTM0_CH0	PTC1
PWM_AB	FTM0_CH1	PTC2
PWM_BT	FTM0_CH2	PTC5
PWM_BB	FTM0_CH3	PTC4
PWM_CT	FTM0_CH4	PTD4
PWM_CB	FTM0_CH5	PTD5
BEMF_A	ADC0_SE8	PTB0
BEMF_B	ADC1_DP0	ADC1_DP0
BEMF_C	ADC0_DP0	ADC0_DP0
VOLT_DCB	ADC0_SE13	PTB3
CUR_DCB	ADC1_SE18	ADC1_SE18
HALL_A / ENC_A	FTM2_CH0	PTB18
HALL_B / ENC_B	FTM2_CH1	PTB19
HALL_C / ENC_I	FTM1_CH1	PTA13



ICAP Classification:FCP:-X-FIUO:PUBI:...

Drawing Title:**FRDM-MC-LVBLDC**

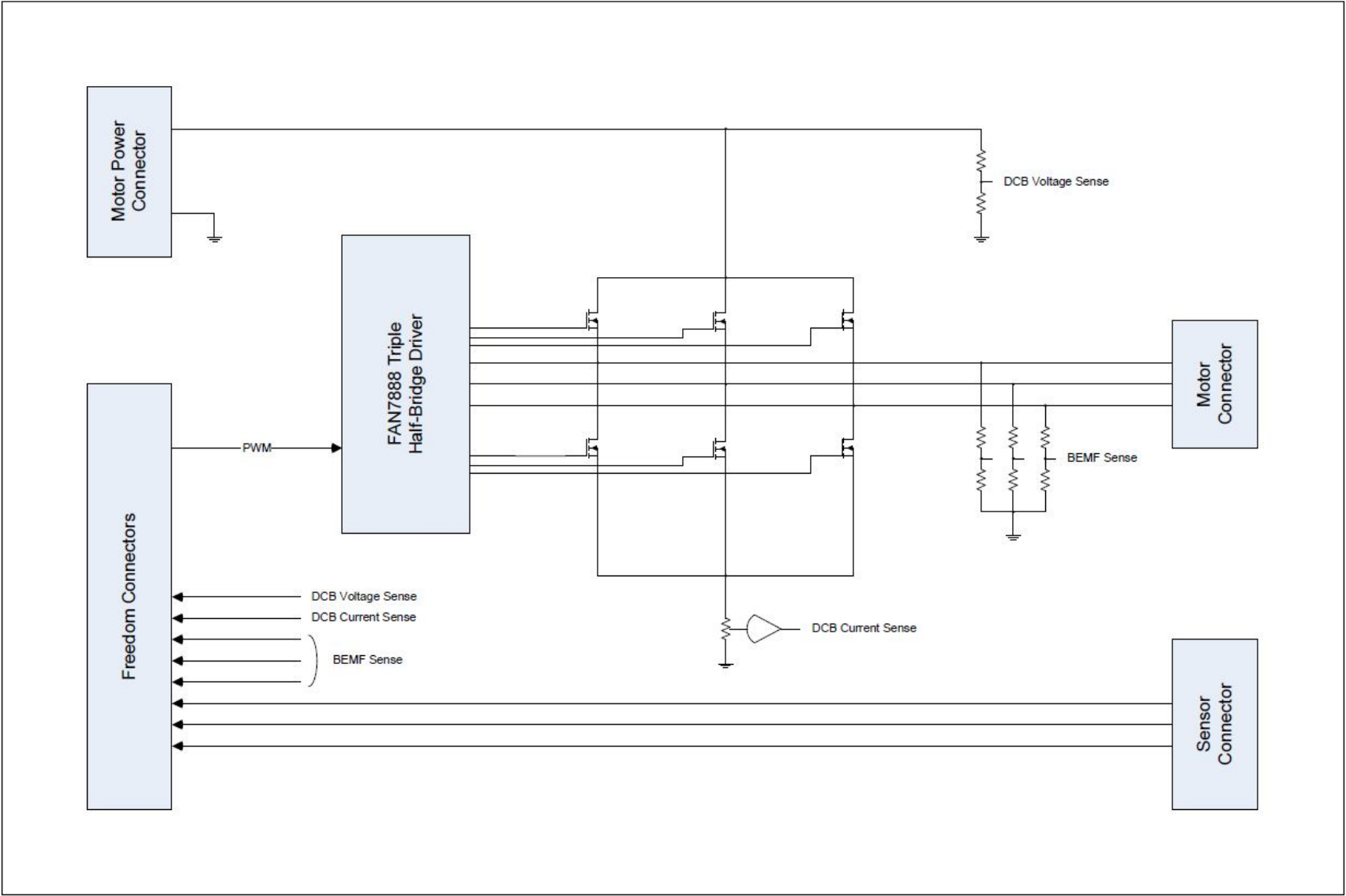
Page Title:**NOTES**

Size C

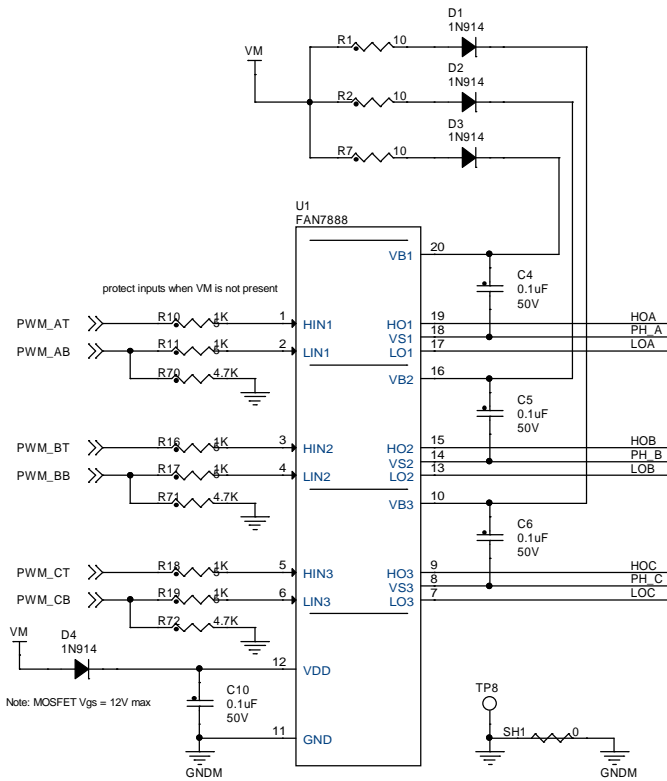
Document NumberSCH-XXXXX PDF: SPF-XXXXX

Rev X1

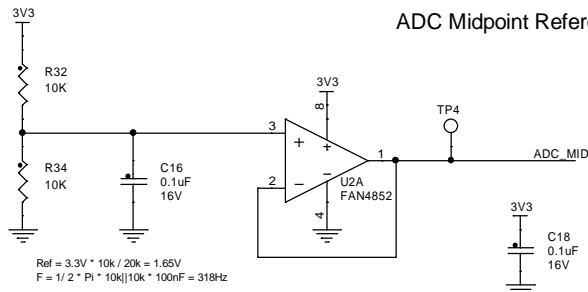
Date: Friday, January 23, 2015Sheet 2 of 6



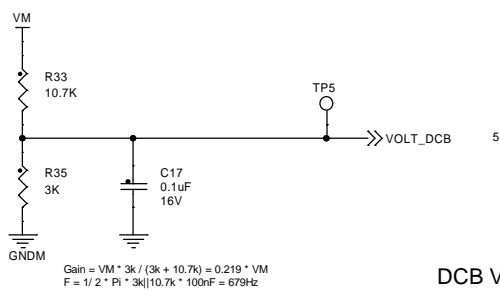
MOSFET Gate Drivers



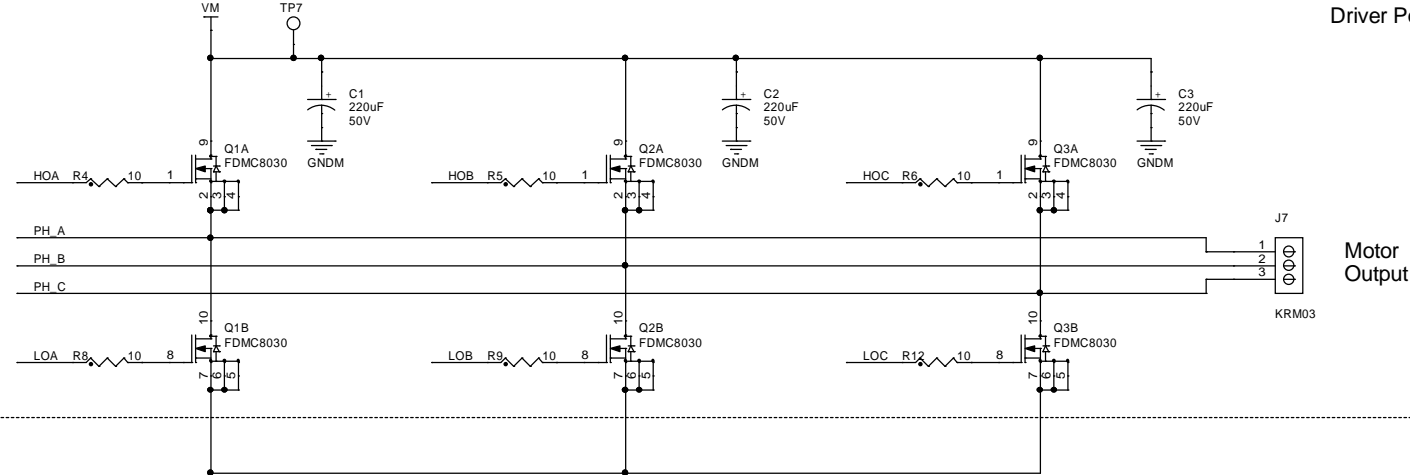
ADC Midpoint Reference



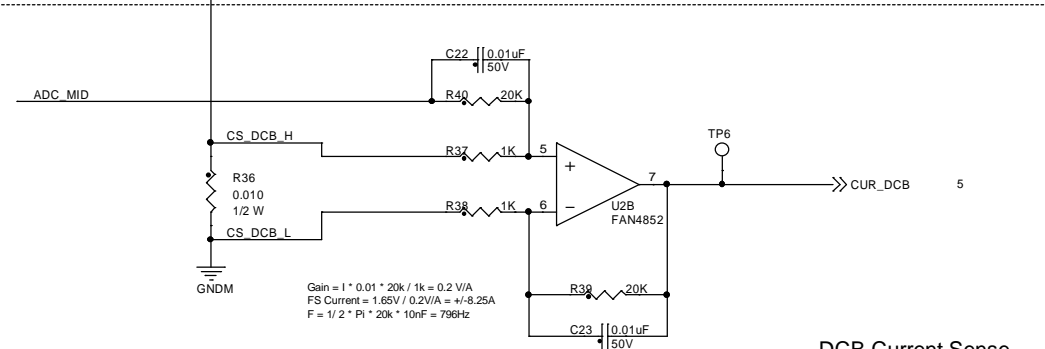
DCB Voltage Sense



Driver Power Stage



DCB Current Sense



BEMF Sense

