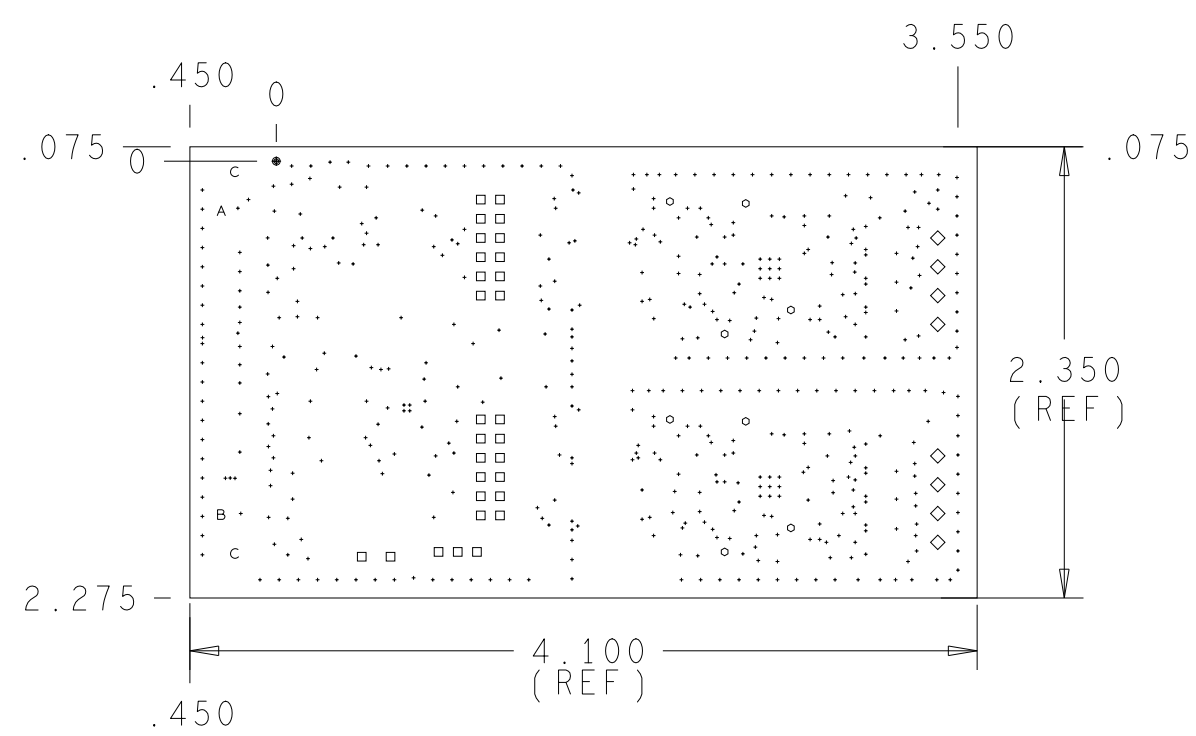


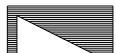
REVISIONS			
REV	DESCRIPTION	DATE	APPROVED
A	INITIAL RELEASE	DEC14	J. CHUA
B	CHANGED A5 PER ECR-054029	JUN15	J. CHUA

DRILL CHART: TOP to BOTTOM				
ALL UNITS ARE IN MILS				
FIGURE	SIZE	TOLERANCE	PLATED	QTY
•	12.0	+3.0/-3.0	PLATED	502
◦	40.0	+3.0/-3.0	PLATED	8
◻	45.0	+3.0/-3.0	PLATED	29
◊	55.0	+3.0/-3.0	PLATED	8
△	28.0	+2.0/-2.0	NON-PLATED	1
■	43.0	+2.0/-2.0	NON-PLATED	1
◄	136.0	+2.0/-2.0	NON-PLATED	2



PRIMARY SIDE

PRIMARY SIDE

UNLESS OTHERWISE SPECIFIED DIMENSIONS ARE IN INCHES		APPROVAL		DATE		 <div>ANALOG DEVICES</div> <div>WWM DIVISION 804 WOBURN STREET WILMINGTON, MA 01887</div>	
TOLERANCES		TEMPLATE ENGINEER		JUN14			
DECIMALS		HARDWARE SERVICES		JUN14		<div>TITLE</div> <div>FABRICATION</div> <div>AD7124 EVAL BOARD</div>	
FRACTIONS		R. MacDonald		JUN14			
ANGLES		HARDWARE SYSTEMS		JUN14			
XX .010 +.132 .. 2		TEST ENGINEER		N/A			
XXX -.005		COMPONENT ENGINEER		JUN14			
XXX - .050		TEST PROCESS		N/A		<div>SIZE</div> <div>FSCM NO</div> <div>DRAWING NUMBER</div> <div>REV</div> <div>D 24355 09-039847-00 B</div>	
MATERIAL		HARDWARE RELEASE		JUN14			
		R. Amorille					
		DESIGNER		JUN15			
		J. Ramos					
FINISH		PTD ENGINEER		JUN15			
		J. CHUA					
		CHECKER		JUN15			
		J. CHUA					
DO NOT SCALE DWG				SCALE		1/1	
						SHEET 1 of 2	




SPECIFICATIONS:

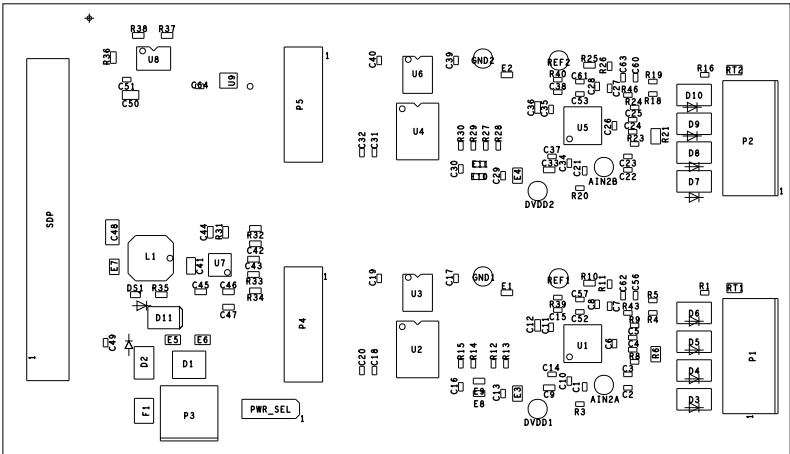
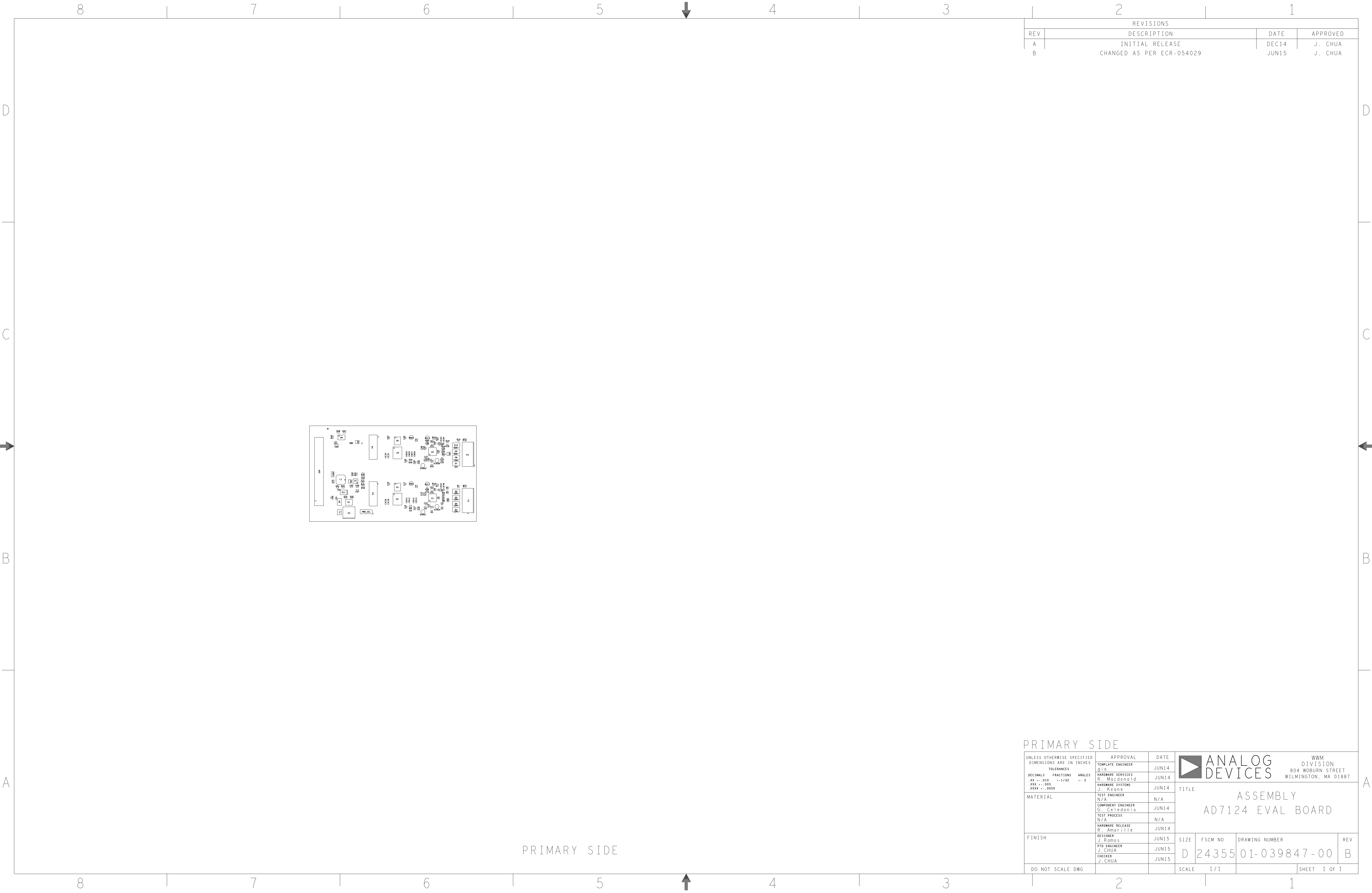
MATERIALS;	ALL LAMINATES AND BONDING MATERIALS SHOULD BE SELECTED FROM IPC-4101 OR IPC-4103, MINIMUM Tg>170degC, Td>300degC, U.L. RATING OF 94 V-0
MATERIAL FAMILY;	FR4
CLADDING;	EXTERNAL LAYERS .5 OZ. COPPER, OVERPLATE TO 1.5 OZ. INTERNAL SIGNAL LAYERS .5 OZ. COPPER. INTERNAL PLANE LAYERS 1 OZ. COPPER.
	NOTE: IF THE LAYER STACKUP CONFLICTS WITH THE ABOVE CLADDING SPECIFICATIONS THEN THE LAYER STACKUP SHALL TAKE PRECEDENCE.
SOLDER MASK;	SHALL BE LIQUID PHOTOIMAGEABLE (LPI) APPLIED ON BOTH SIDES OVER BARE COPPER OR GOLD. COLOR GREEN.
SILK SCREEN;	SHALL BE PERMANENT NON-CONDUCTIVE EPOXY INK, COLOR: WHITE SYNTHETIC INKJET PRINTING ALLOWED FOR DENSE BOARDS, COLOR: WHITE
SURFACE FINISH;	ENIG (Electroless Nickel/Immersion Gold) 100 MICRO INCHES NICKEL/ 3-5 MICRO INCHES GOLD
INTENTIONAL SHORTS;	IF SUPPLIED DATA INCLUDES A FILE "READ_ME.2", THEN INTENTIONAL NET SHORTS EXIST. CUSTOMER REVIEW AND APPROVAL IS REQUIRED IF SUPPLIED DATA REPORTS ANY CONDITION THAT DOES NOT MATCH "READ_ME.2" FILE PROVIDED.
TEST REQUIREMENTS;	100% NETLIST ELECTRICAL VERIFICATION USING CUSTOMER SUPPLIED IPC-D-356 NETLIST FOR OPENS AND SHORTS WHEN "GERBER DATA" IS PROVIDED. THIS VERIFICATION ALSO REQUIRED FOR "ODB++" DATA PER EMBEDDED NETLIST.
ROHS COMPLIANCE NOTE:	HOMOGENOUS MATERIALS IN THIS BOARD SHALL BE COMPLIANT THE EU RoHS DIRECTIVE 2002/95/EC

REQUIREMENTS:

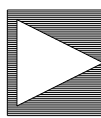
- REFER TO IPC-6010 SERIES (LATEST REV.), CLASS 2 FOR FABRICATION UNLESS OTHERWISE SPECIFIED.
- ACCEPTABILITY PER ANALOG DEVICES, INC. SPECIFICATION TST00115, (LATEST REVISION.)
- MODIFICATIONS TO THE ARTWORK ARE NOT ALLOWED WITHOUT WRITTEN AUTHORIZATION.
- HOLE PATTERN TOLERANCES FOR UNDIMENSIONED HOLES SHALL BE A DIAMETER OF 0.005 INCHES FROM THEIR TRUE POSITION.
- PLATED HOLE WALL THICKNESS SHALL NOT BE LESS THAN 0.001 INCH MINIMUM AVERAGE, WITH NO READING LESS THAN .0008 BY CROSS SECTION.
- HOLE DIAMETERS APPLY AFTER PLATING.
- FINISHED CONDUCTOR WIDTHS SHALL NOT BE REDUCED FROM THE NOMINAL INDICATED ON THE MASTER PATTERN, BY MORE THAN THE CONDUCTOR THICKNESS.
- MINIMUM DESIGN LINE WIDTH IS .010 INCH.
- MINIMUM DESIGN SPACING IS .008 INCH.
- NON-FUNCTIONAL PAD REMOVAL FROM INNER SIGNAL LAYERS MAY BE PERFORMED AFTER CUSTOMER APPROVAL.
- IF PAD SIZES PROVIDED ARE NOT LARGE ENOUGH TO MAINTAIN ANNULAR RING REQUIREMENT, MFR. MAY REQUEST APPROVAL TO TEAR DROP PADS TO MAINTAIN ANNULAR RING. (AT PAD TO TRACE INTERSECTION ONLY AND ELECTRICAL INTEGRITY MUST BE MAINTAINED.)
- THIEVING MAY BE ADDED TO COMPENSATE FOR LOW COPPER DENSITY AREAS ON THIS DESIGN ONLY AFTER REVIEW AND APPROVAL FROM THE CUSTOMER:
 - THIEVING TO CARD EDGE, FIDUCIALS, NON-PLATED THROUGH HOLES, ALL OTHER FEATURES TO BE 0.200 INCH MINIMUM.
 - THERE SHALL BE NO THIEVING IN ANY AREAS FREE OF SOLDER MASK OR INTERNAL COPPER PLANES.
- MFR. TO LEGIBLY ETCH OR STAMP/SCREEN WITH PERMANENT NON-CONDUCTIVE INK ON SECONDARY SIDE IN A CLEAR AREA UNLESS OTHERWISE INDICATED;
 - U.L. CODE-FLAMMABILITY RATING
 - DATE CODE (STAMP).
 - LOT NUMBER
 - MFR LOGO
 - SUCCESSFUL ELECTRICAL TEST.
- REPAIRS PER IPC-7711/21 (LATEST REV.) ARE ALLOWED.

PRIMARY SIDE

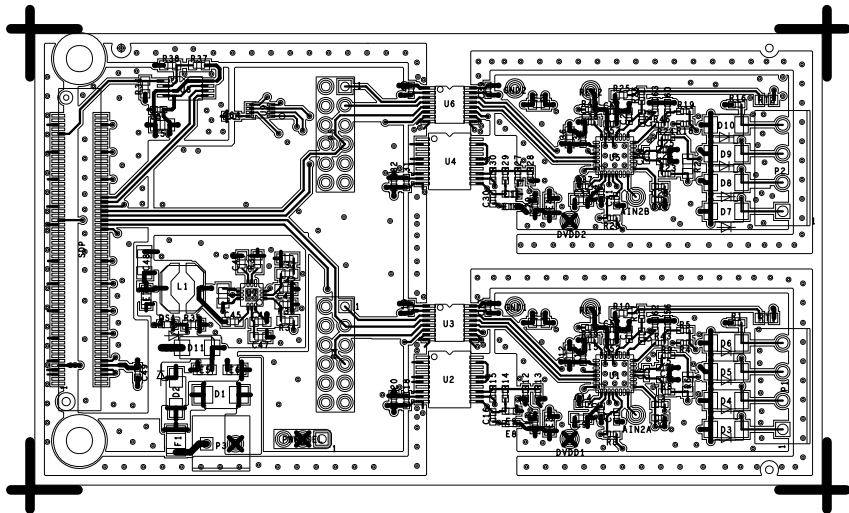
 ANALOG DEVICES WWM DIVISION 804 WOBURN STREET WILMINGTON, MA 01887			
SIZE	FSCM NO	DRAWING NUMBER	REV
D	24355	09-039847	B
SCALE	1/1	SHEET 2 OF 2	



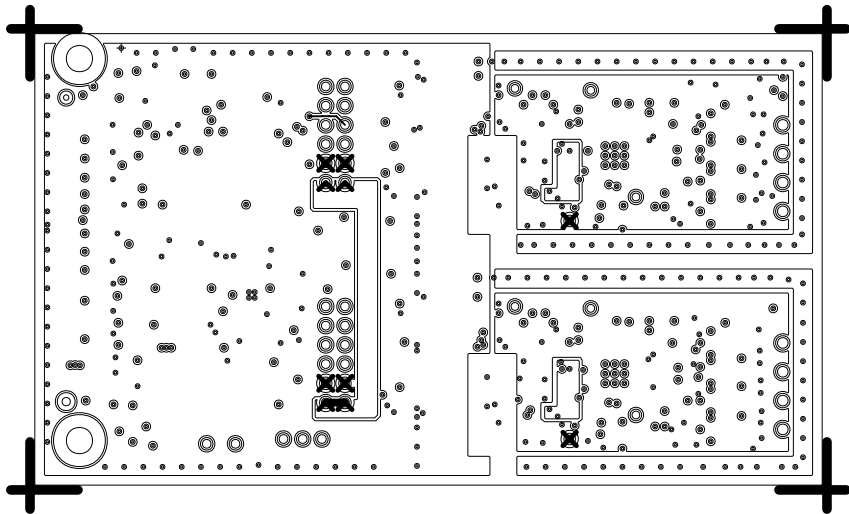
REVISIONS			
REV	DESCRIPTION	DATE	APPROVED
A	INITIAL RELEASE	DEC14	J. CHUA
B	CHANGED AS PER ECR-054029	JUN15	J. CHUA

PRIMARY SIDE								
UNLESS OTHERWISE SPECIFIED DIMENSIONS ARE IN INCHES			APPROVAL		DATE		<div><div></div><div>ANALOG DEVICES</div></div> <div>WWM DIVISION 804 WOBURN STREET WILMINGTON, MA 01887</div>	
TOLERANCES			TEMPLATE ENGINEER		JUN14			
DECIMALS	FRACTIONS	ANGLES	HARDWARE SERVICES		JUN14			
.XX	..010	..1/32	R. Macdonald					
.XXX	..005	..2	HARDWARE SYSTEMS		JUN14			
.XXXX			J. Keane				TITLE	
MATERIAL			TEST ENGINEER		N/A		ASSEMBLY AD7124 EVAL BOARD	
			N/A		N/A			
			COMPONENT ENGINEER		JUN14			
			G. Celdonio					
FINISH			TEST PROCESS		N/A		SIZE	
			N/A		N/A			
			HARDWARE RELEASE		JUN14			
			R. Amarillo					
DO NOT SCALE DWG			DESIGNER		JUN15		FSCM NO	
			J. Ramos					
			PTD ENGINEER		JUN15			
			J. CHUA					
			CHECKER		JUN15		DRAWING NUMBER	
			J. CHUA					
							REV	
							01-039847-00	
							B	
							SHEET 1 OF 1	
							SCALE 1/1	

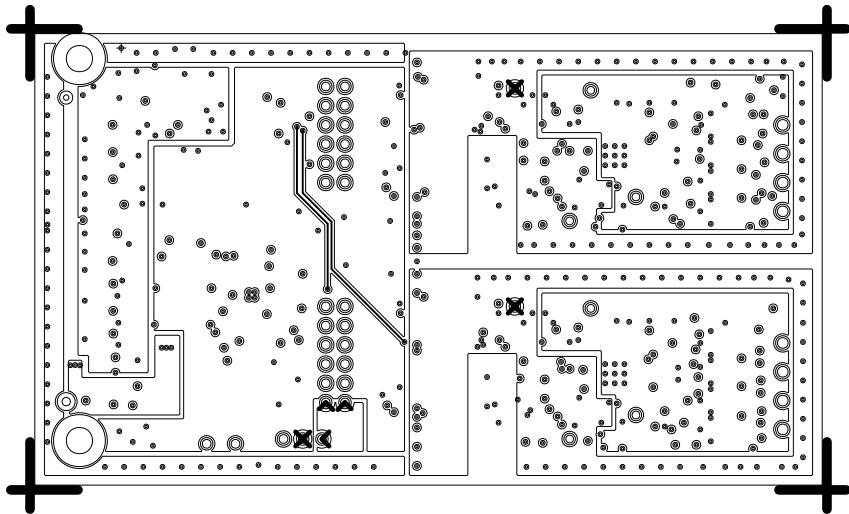
L1 PRIMARY
08-0939847-01
REV B



L2 GND
08-0939847-07
REV B



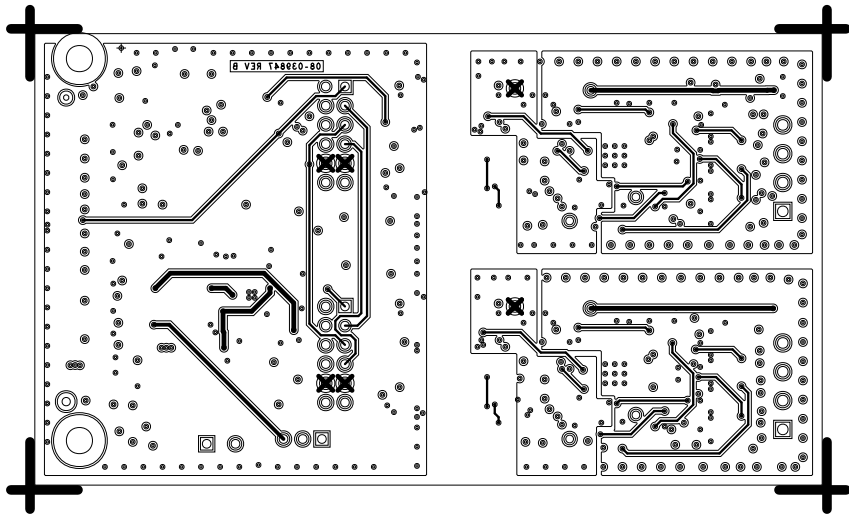
L3 PWR
08-0939847-08
REV B



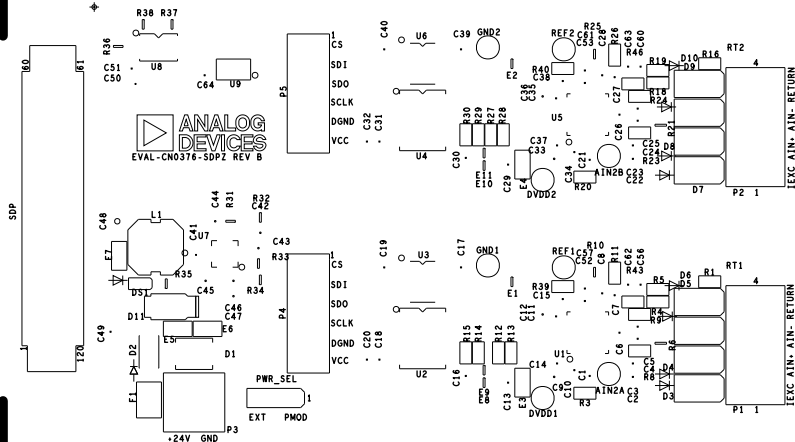
L4 SECONDARY

08-0939847-02

REV B



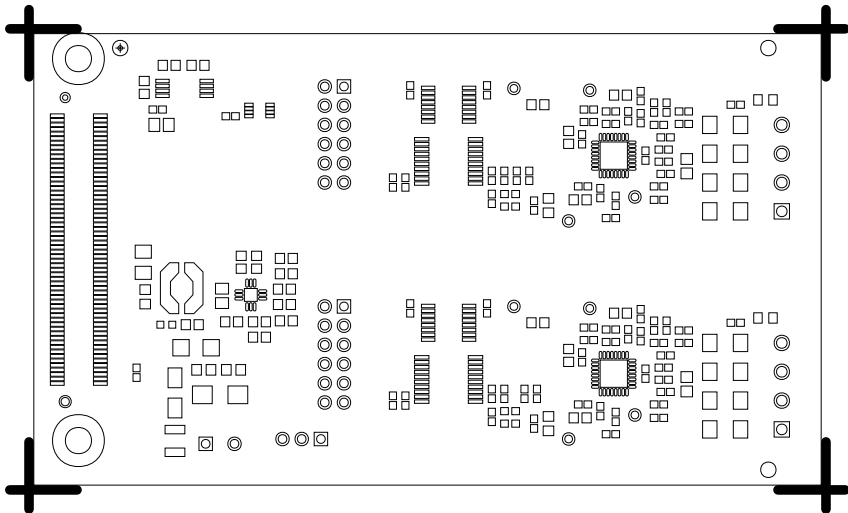
REV B



SOLDERMASK PRIMARY

08-0939847-04

REV B



SILKSCREEN SECONDARY

08-0939847-05
REV B



+

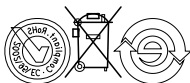


4

1

RELS GND5

24



1

RELS GND1

1 25

BSNIA DVDD5

4

44

BSNIA

DVDD1

1 21

1 BWR_SEC J33

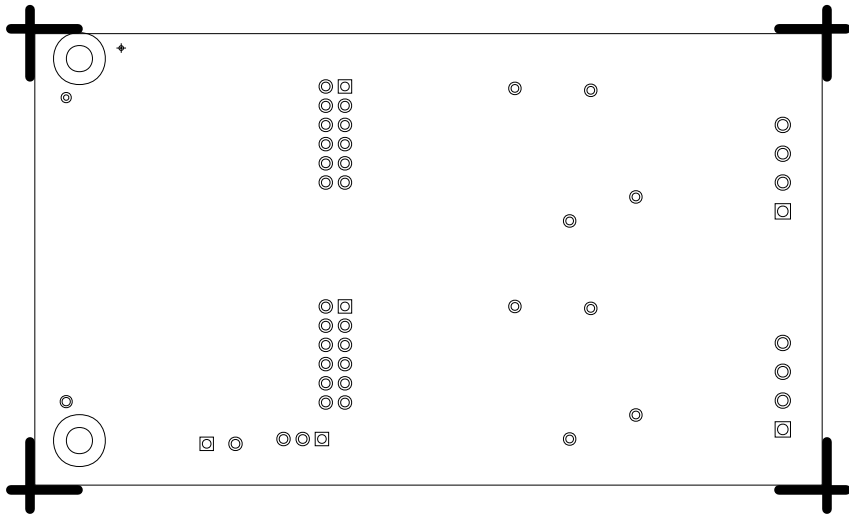
23



SOLDERMASK SECONDARY

08-0939847-06

REV B



PASTEMASK PRIMARY

08-0939847-09

REV B

