



AHEAD OF WHAT'S POSSIBLE™

Search



PARAMETRIC SEARCH

PRODUCTS

APPLICATIONS

DESIGN CENTER

COMMUNITY

EDUCATION

SUPPORT



EVAL-ADS7-V2

EVAL-ADS7-V2



Print



My Analog

ADS7-V2EBZ

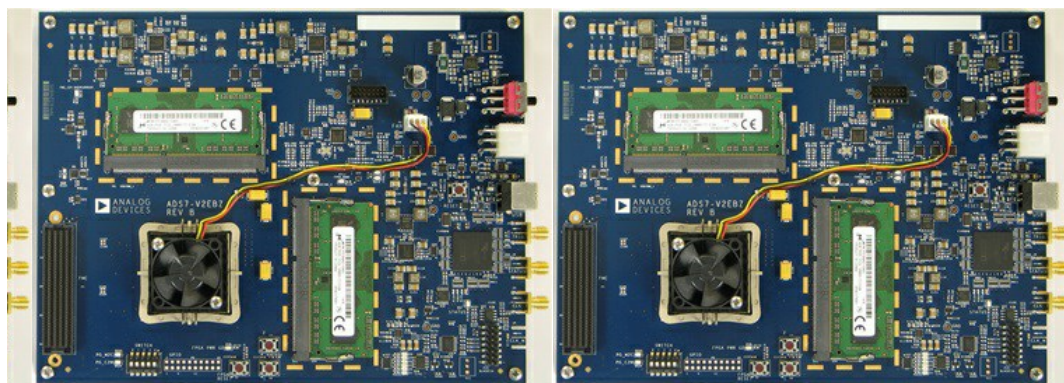
FPGA Based Data Capture Kit

Overview

Documentation

Related Hardware

Buy



Features

- Based on Virtex-7 FPGA
- One (1) FMC-HPC connector
- Ten (10) 13.1 Gbps transceivers supported
- Two (2) DDR3-1866 DIMMs
- Simple USB port interface (2.0)

Product Details

The ADS7-V2 Evaluation Board was developed to support the evaluation of Analog Devices high speed A/D converters, D/A converters and Transceivers with JESD204B bit rates up to 13.1 Gbps. The Quick Start Wiki site listed below provides a high level overview of the platform. In addition, each use case of the board has its own section (e.g. Using the ADS7-V2 for High Speed A/D Converter Evaluation). The ADS7-V2 is intended to be used only with specified Analog Devices Evaluation Boards. The ADS7-V2 is not intended to be used as a development platform, and no support is available for standalone operation. Please refer to Xilinx and its approved distributors for FPGA Development Kits

Documentation



See All

Evaluation Documentation

Related Hardware

COMPATIBLE PRODUCT EVALUATION BOARDS

The High Speed Data Capture controller boards were designed to be used in conjunction with various ADI component evaluation boards as part of a customer evaluation environment. The following evaluation boards are compatible with High Speed Data Capture controller boards.

High Speed ADC > 10MSPS (3)	⌵
IF/RF Receivers (1)	⌵

Buy

Evaluation Boards

Pricing displayed is based on 1-piece.

Model	Description	Price	RoHS
ADS7-V2EBZ Production	Evaluation Board		Yes

Back

Add to cart

Select a country ⌵

Check Inventory

Pricing displayed is based on 1-piece. The

Problem Solvers

4,700+

Patents Worldwide

125,000

Customers

50+

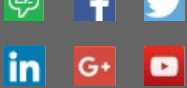
Years

Analog Devices. Dedicated to solving the toughest engineering challenges.

Ahead of What's Possible

ADI enables our customers to interpret the world around us by intelligently bridging the physical and digital with unmatched technologies that sense, measure and connect. We collaborate with our customers to accelerate the pace of innovation and create breakthrough solutions that are ahead of what's possible.

See the Innovations



[Analog Dialogue](#)
[Contact us](#)
[News Room](#)
[Sales & Distribution](#)

[Careers](#)
[Investor Relations](#)
[Quality & Reliability](#)

[简体中文](#)
[日本語](#)
[Русский](#)

products, design tools, training and events?
Choose from one of our 12 newsletters that match
your product area of interest, delivered monthly or
quarterly to your inbox.

[Sign Up](#)