

300W Isolated DC-DC Converter

Reference Guide

RD024-RGUIDE-01

TOSHIBA ELECTRONIC DEVICES & STORAGE CORPORATION

Table of Contents

1. INTRODUCTION 3

2. SPECIFICATION..... 3

2.1. Specification 3

2.2. Outline 4

2.3. Block diagram..... 4

2.4. Components layout 5

2.5. PCB traces 7

3. OPERATING PROCEDURE 13

3.1. Connections with external equipment..... 13

3.2. Enabling and disabling procedures 14

3.3. Precautions for evaluation (electric shock, burn injury, etc.) 15

4. POWER SUPPLY CHARACTERISTICS 17

4.1. Efficiency 17

1. Introduction

This reference guide describes the specifications, operating procedure, and efficiency characteristics of a 300W isolated DC-DC converter. This converter operates over an input voltage range of 36 to 75VDC and provides 300W power at 12VDC output. This converter is suitable for various applications, including telecommunication equipment with 48VDC lines and industrial systems powered by 48V batteries. This reference design provides various design information, which help to reduce the time and effort to design a DC-DC converter according to actual required specifications.

For various information on this reference design →

[Click Here](#)

This converter uses Toshiba's latest small surface-mount power MOSFETs as switching devices and small surface-mount components for other types of devices on both the primary and secondary sides. Consequently, despite the use of a general-purpose winding transformer, small PCB size (82mm x 82mm) and high efficiency (94%) are achieved. The winding transformer simplifies design as a basis for actual applications and helps to constitute a power supply circuit on PCB instead of using an external power supply module.

2. Specification

2.1. Specification

Table 2.1 shows the input and output specification of the 300W isolated DC-DC converter.

Table 2.1 Input and output specification of the 300W isolated DC-DC converter

Parameter	Test condition	Min.	Typ.	Max.	Unit
Input characteristics					
Input voltage		36		75	V
Input current	$V_{in} = 48V, I_{out} = 25A$			12	A
Output characteristics					
Output voltage		11.4	12.0	12.6	V
Output current				25	A
Output power				300	W
Output ripple voltage				200	mV
Switching frequency			185		kHz

2.2. Outline

Figure 2.1 shows the outline of the 300W isolated DC-DC converter.



Figure 2.1 300W isolated DC-DC converter

Dimensions: 82mm x 82mm x 24mm

2.3. Block diagram

Figure 2.2 shows the block diagram of the 300W isolated DC-DC converter.

Refer to RD024-SCHEMATIC-01 for circuit diagrams and RD024-BOM-01_J for a bill of materials.

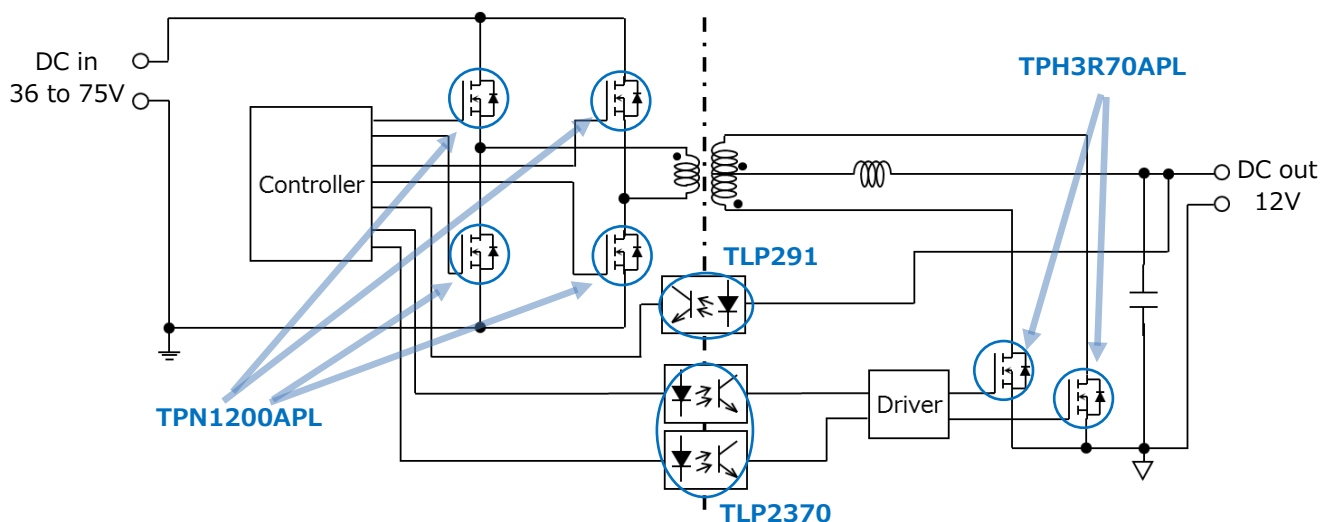


Figure 2.2 Block diagram

2.4. Components layout

Figure 2.3 and Figure 2.4 show the components layout on the printed circuit board (PCB).

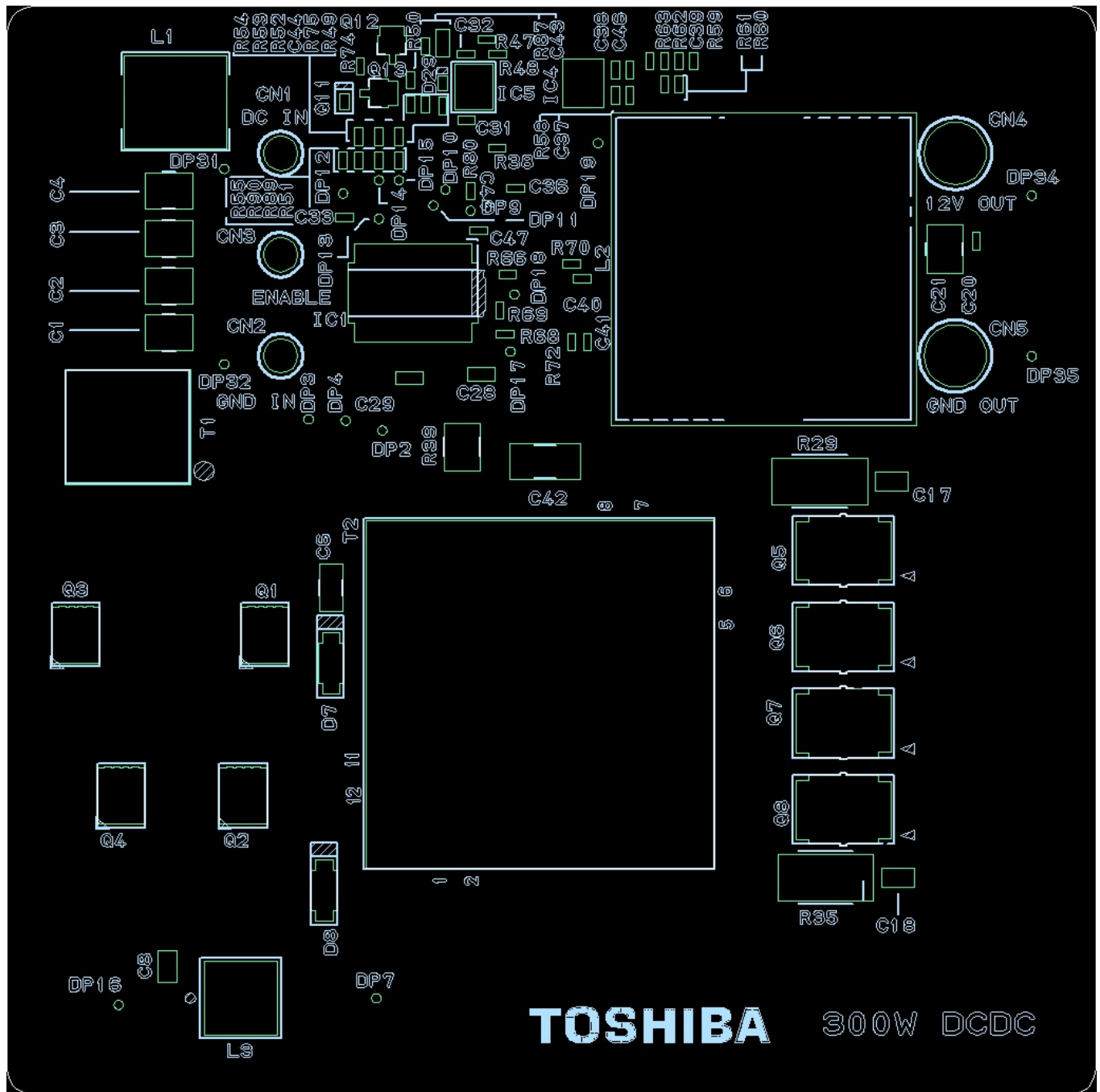


Figure 2.3 Components layout (Top surface of the PCB)

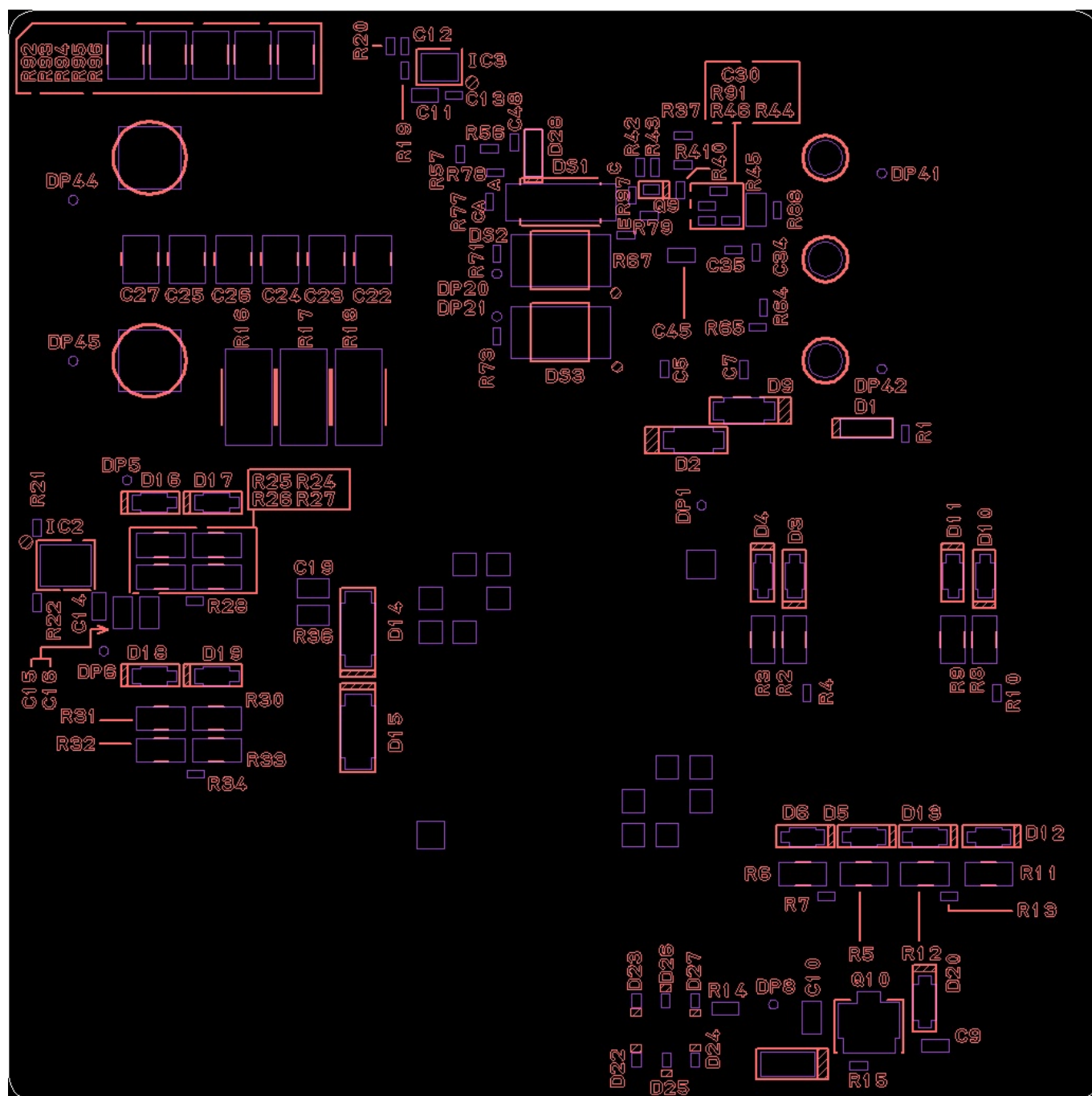


Figure 2.4 Components layout (Bottom surface of the PCB)

2.5. PCB traces

The PCB design files for the 300W isolated DC-DC converter are available in formats for various electronic design automation (EDA) tools. For details, refer to the PCB design file for your EDA tool.

Figure 2.5 shows the Layer 1 of the PCB of this converter.

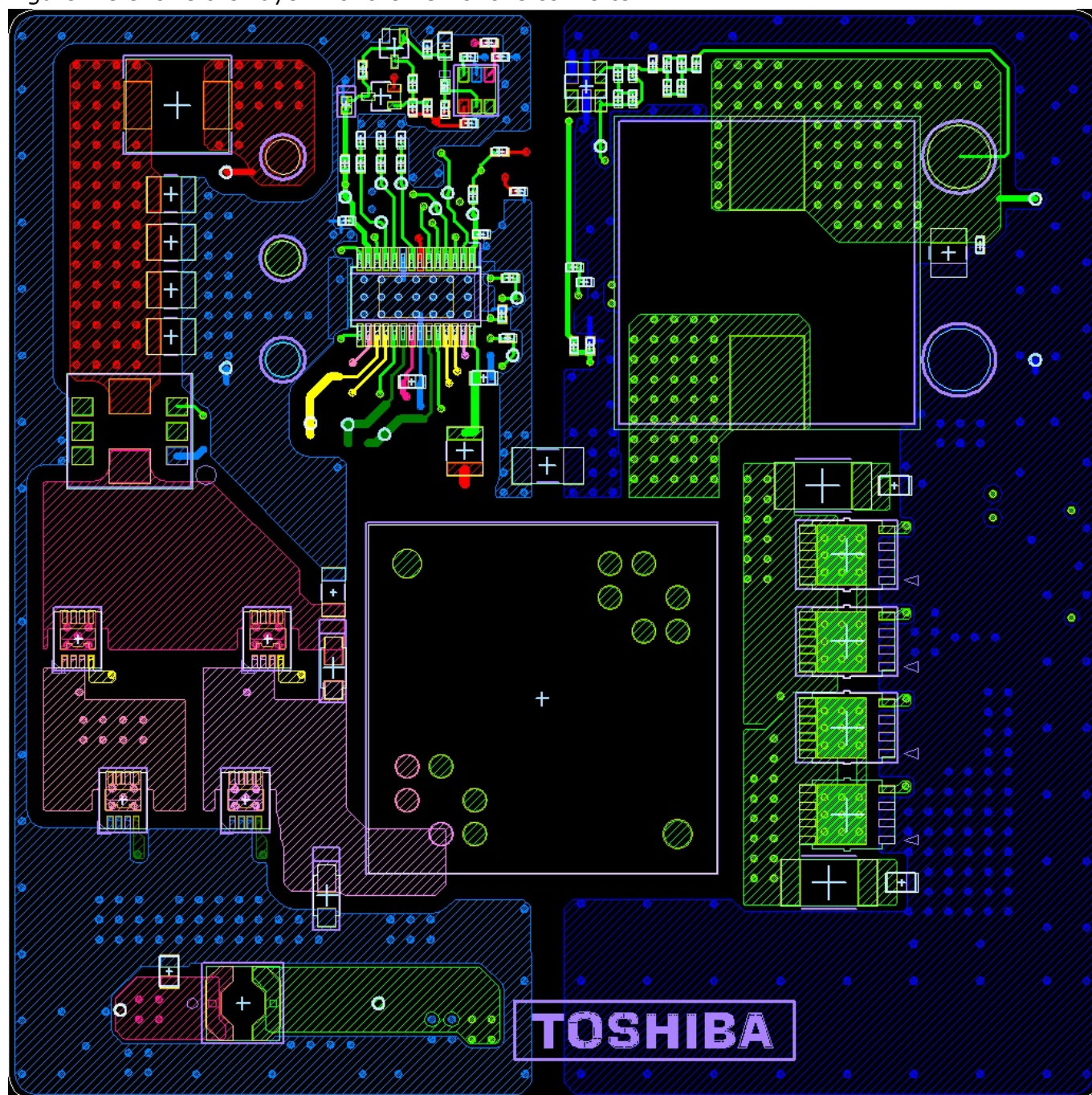


Figure 2.5 Layer 1

Figure 2.6 shows the Layer 2 of the PCB of this converter.

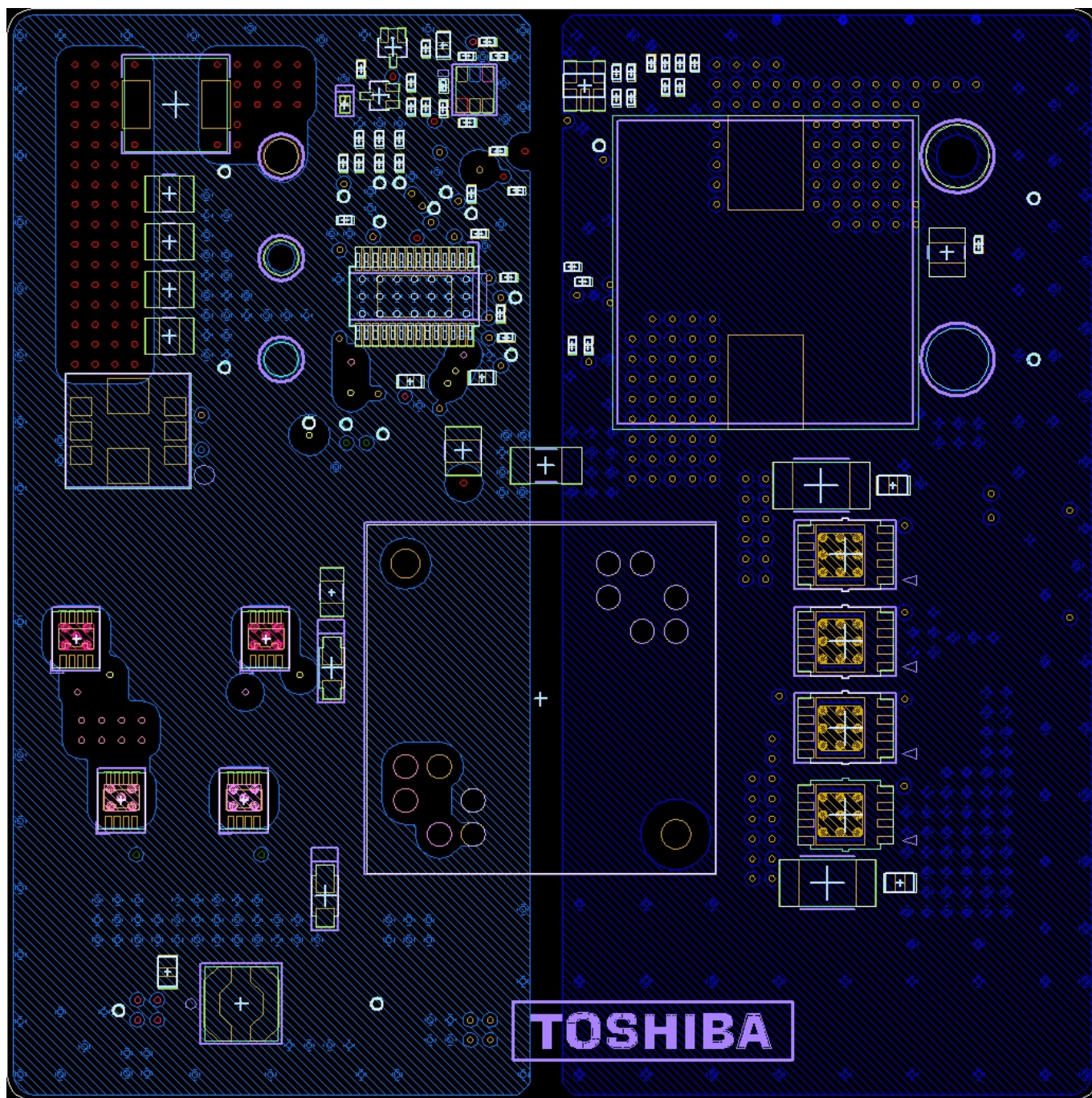


Figure 2.6 Layer 2

Figure 2.7 shows the Layer 3 of the PCB of this converter.

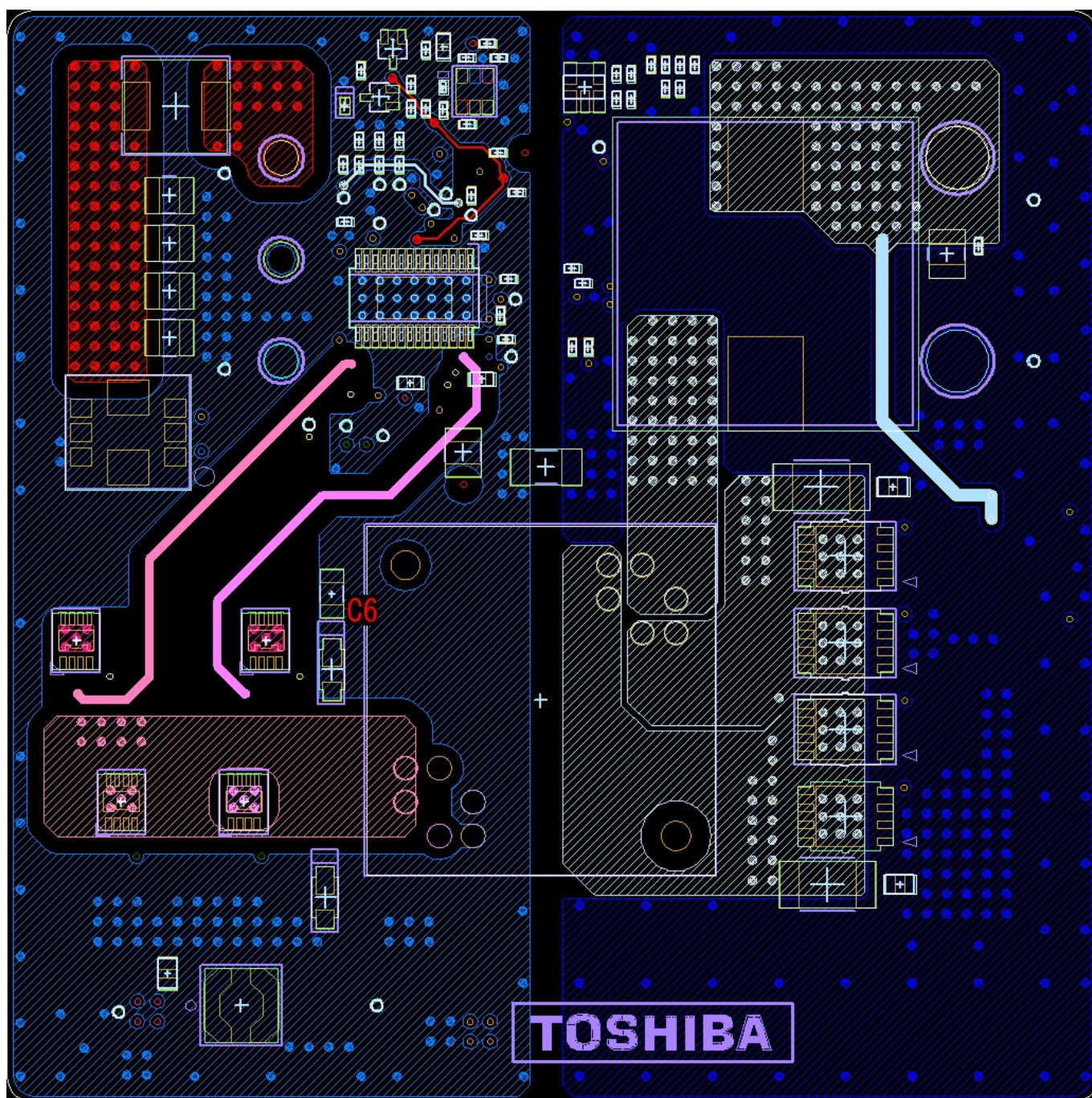


Figure 2.7 Layer 3

Figure 2.8 shows the Layer 4 of the PCB of this converter.

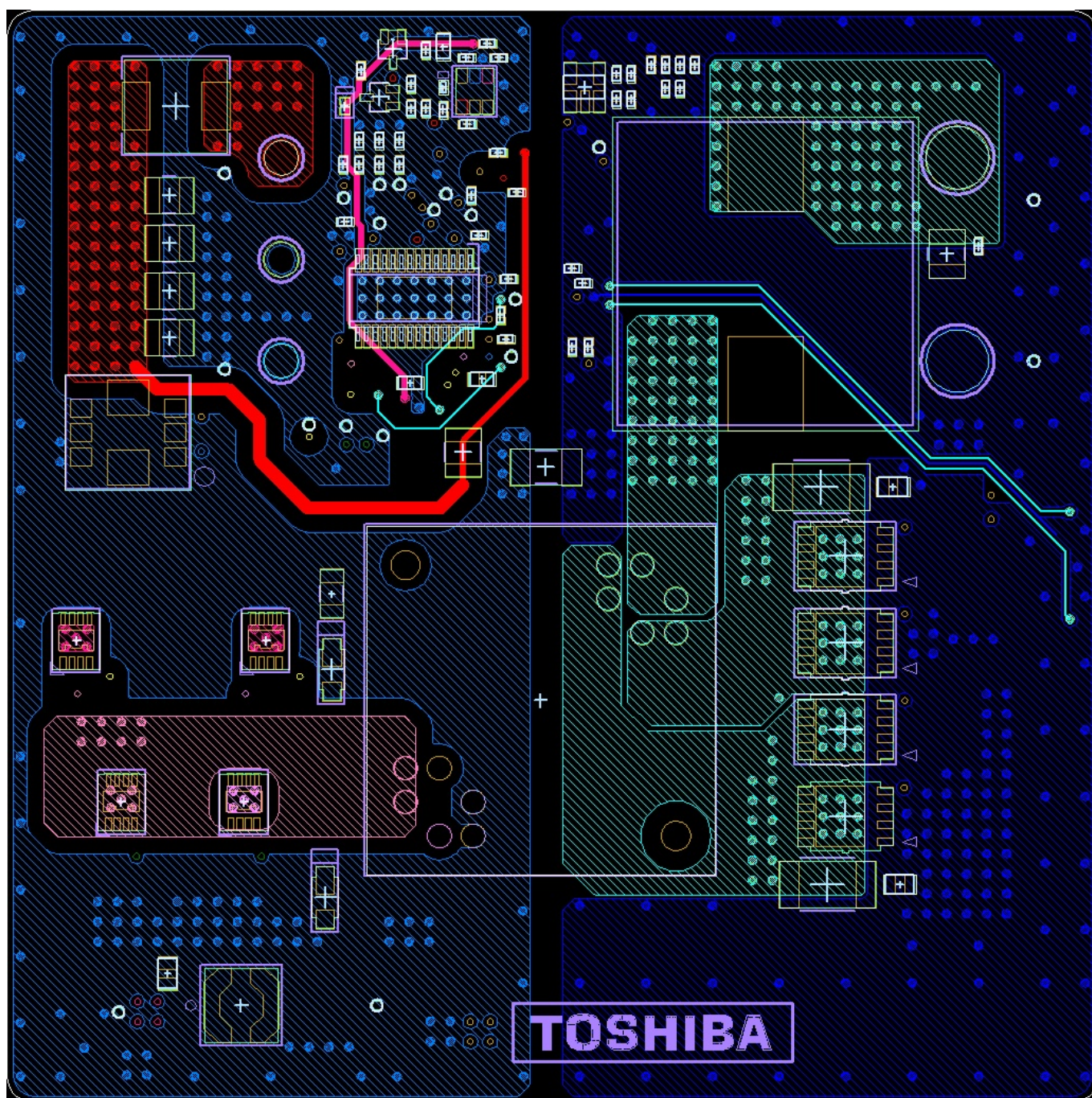


Figure 2.8 Layer 4

Figure 2.9 shows the Layer 5 of the PCB of this converter.

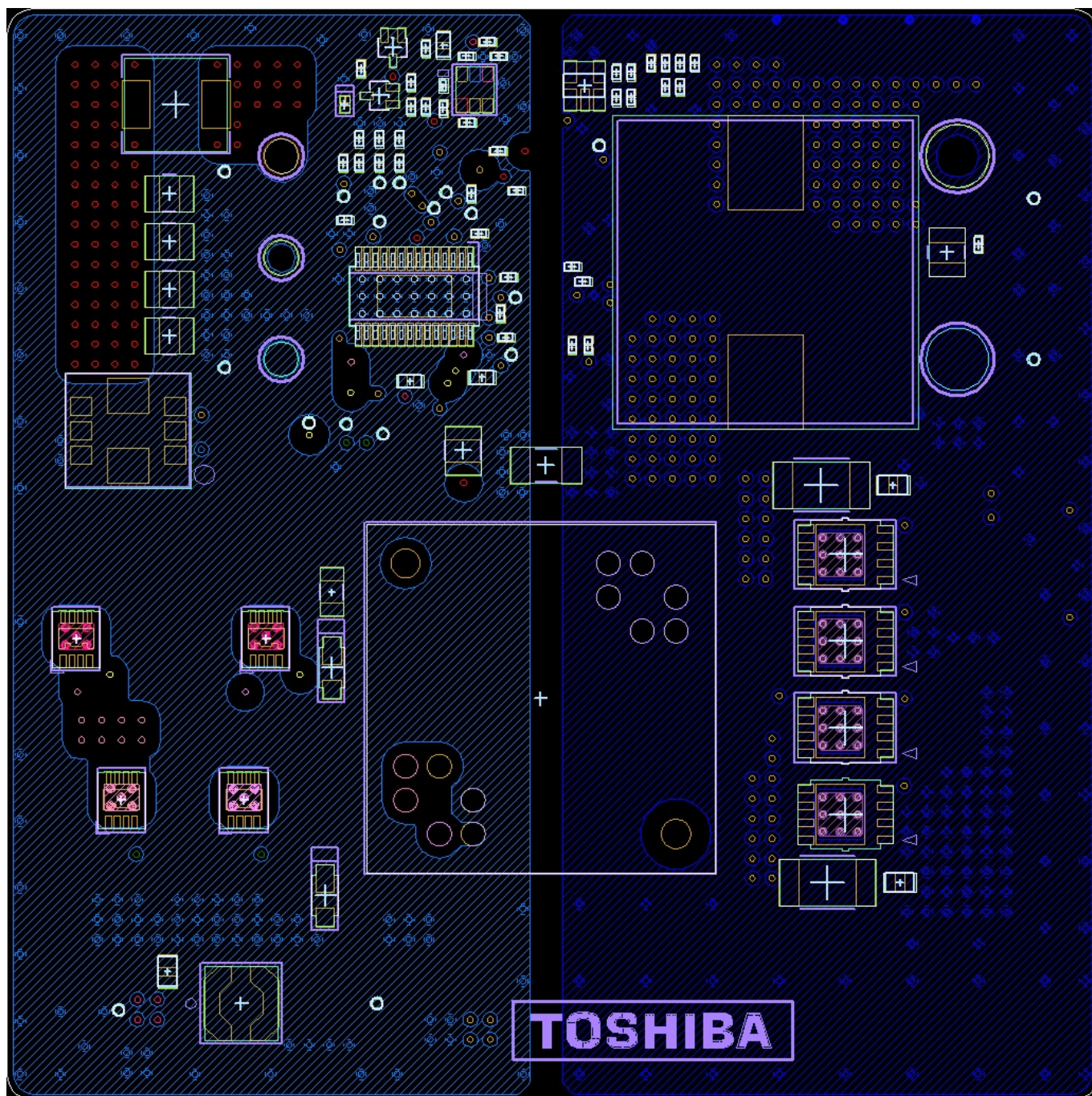


Figure 2.9 Layer 5

Figure 2.10 shows the Layer 6 of the PCB of this converter.

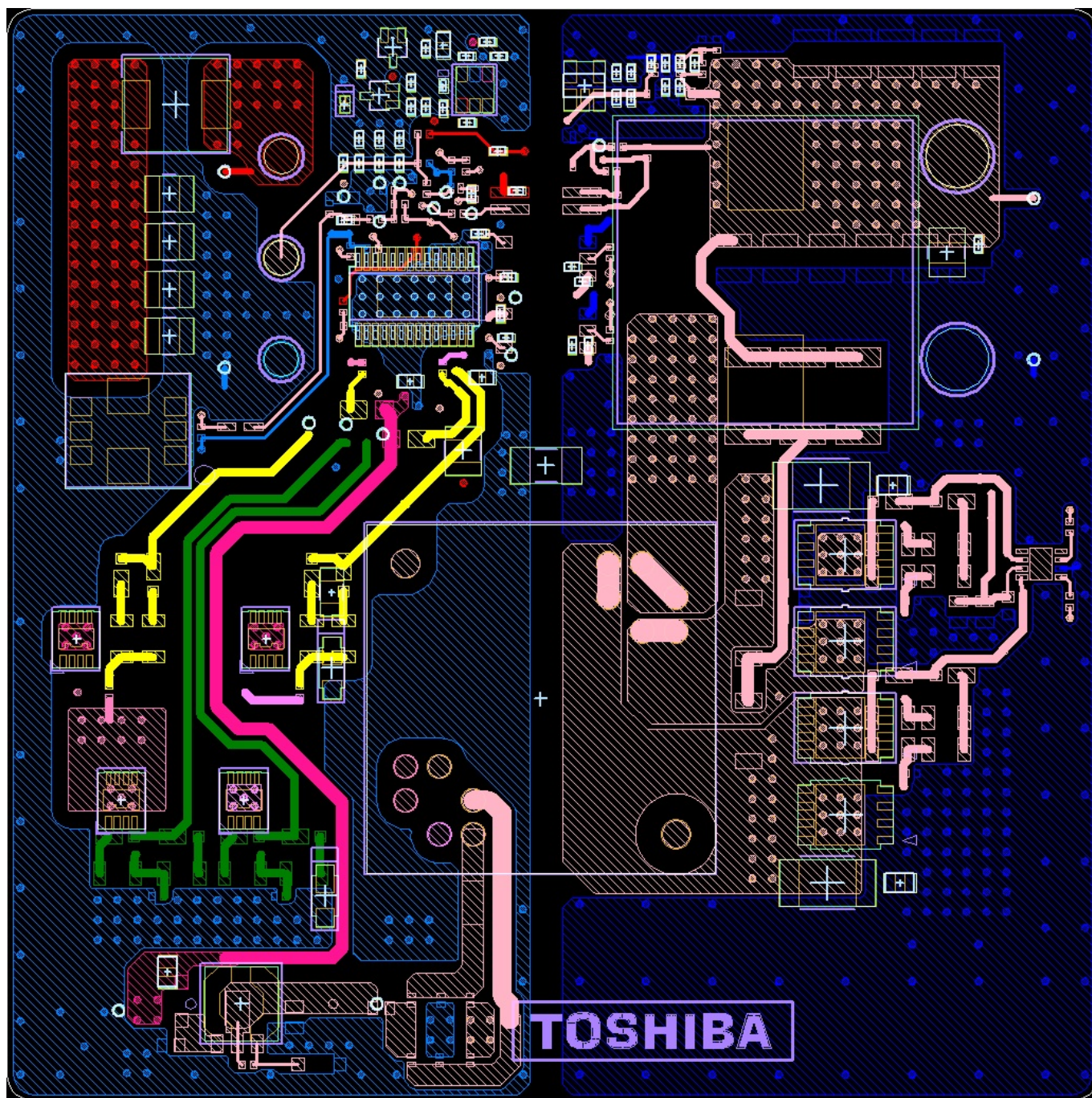


Figure 2.10 Layer 6

3. Operating procedure

This section describes the operating procedure of the 300W isolated DC-DC converter.

3.1. Connections with external equipment

Figure 3.1 shows the external connection pins.

Those enclosed in the red box are input pins. Connect the Input(+) and Input(-) pins directly to a regulated DC power supply. Use a power supply, cables, leads, and connectors meet the specification shown in Section 2.1. The Enable pin controls the operating state of this converter. To disable the converter, open the Enable pin. To enable the converter, short the Enable pin to the Input(-) pin. The pins enclosed in the blue box are output pins. Connect the Output(+) and Output(-) pins to a load equipment. Use a load equipment, cables, and connectors meet the specification shown in Section 2.1.

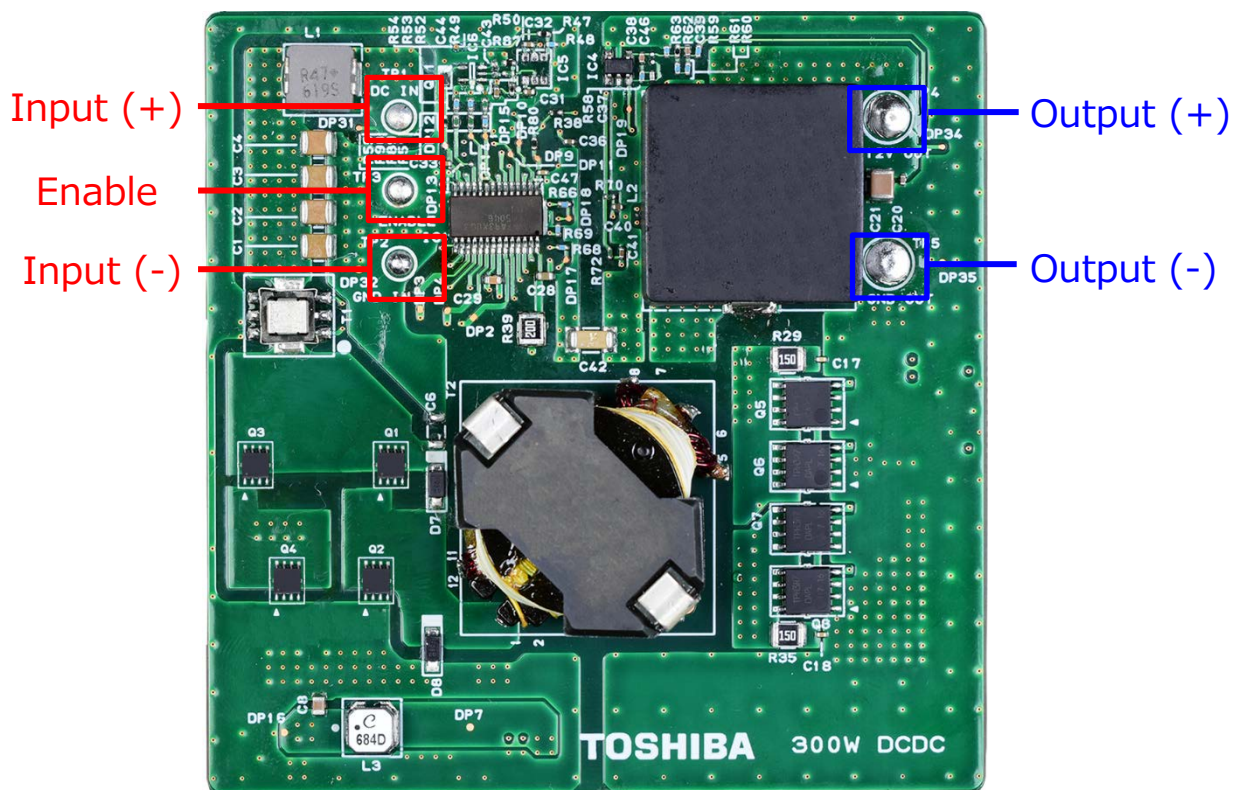


Figure 3.1 External connection pins

3.2. Enabling and disabling procedures

Before enabling the 300W isolated DC-DC converter, make sure that the following pins are at zero volt:
Input(+), Input(-), Output(+), Output(-)

Enabling procedure: Ensure an interval of more than 500ms between the following steps.

1. Apply the output of an external regulated DC power supply to the Input(+) and Input(-) pins.
2. Connect the Enable pin to the GND pin.

Disabling procedure: Ensure an interval of more than 500ms between the following steps.

1. Open the Enable pin.
2. Disable the output of the external regulated DC power supply.

Table 3.1 shows the connections of the Enable pin versus the operating states.

Table 3.1 Connections of the Enable pin

Connection of the Enable pin	Operating state
GND	Enabled
Open	Disabled

3.3. Precautions for evaluation (electric shock, burn injury, etc.)

Figure 3.2 shows the input and output sides of the 300W isolated DC-DC converter. The input side may have a high voltage (more than 60V DC). Take extreme care when observing input waveforms. Even after this converter is disabled, there is an electric shock hazard due to the residual charge of the capacitors. Make sure that the voltages at each section of the board is low enough before touching the board.

The semiconductor devices, transformer, and other components generate heat, depending on the load current. In Figure 3.3, the components that generate much heat are highlighted in red boxes. This converter is designed to be used with forced air cooling. Use an air cooling device to ensure that the temperatures of these components remain below their rated maximum temperatures under high load operating condition. These components pose a risk of burns. Never touch any of them while this converter is active.

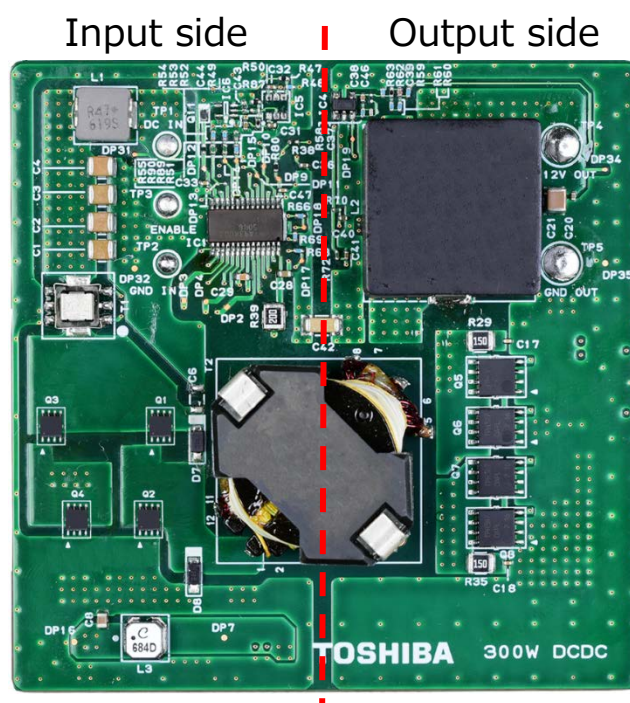


Figure 3.2 Input and output sides

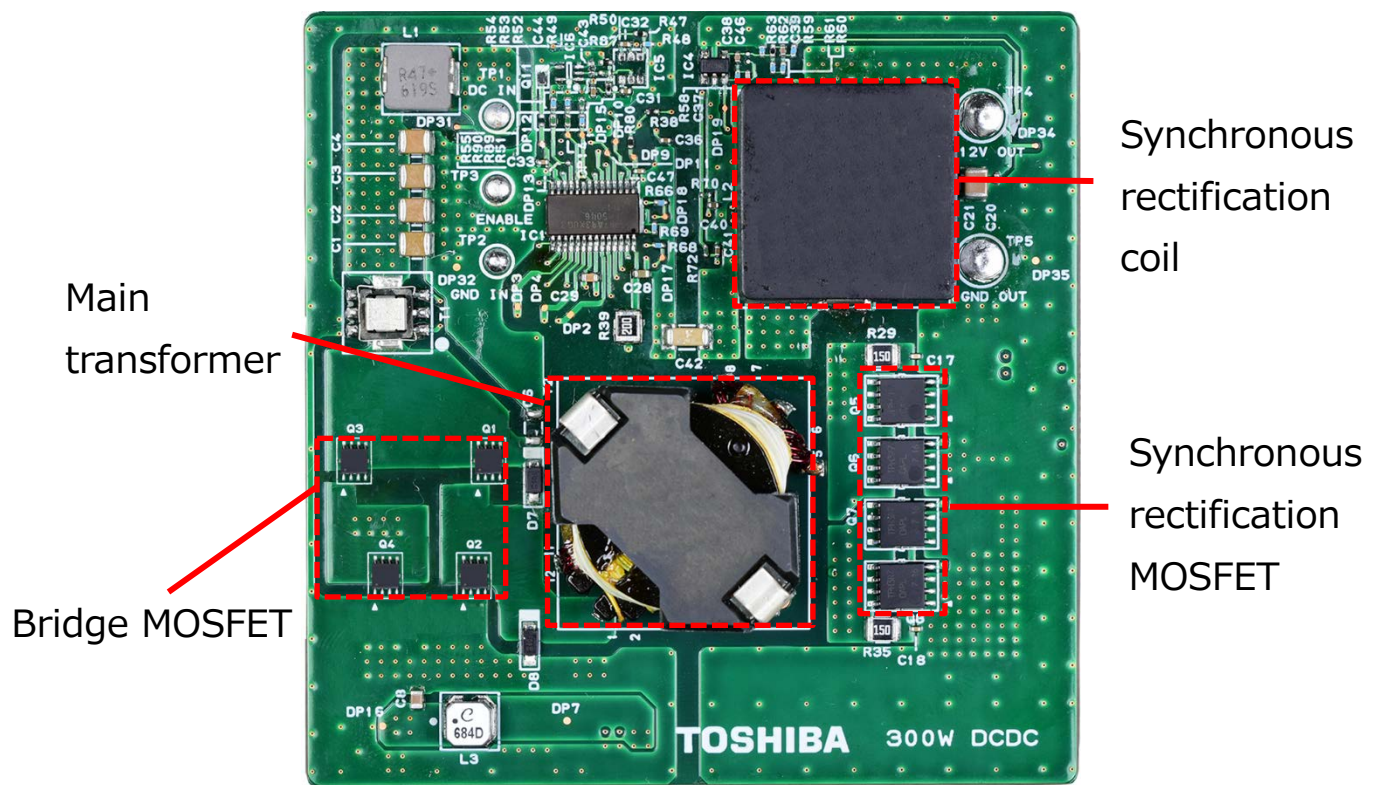


Figure 3.3 Components that generate much heat

4. Power supply characteristics

This section describes the results of efficiency measurements for the 300W isolated DC-DC converter.

4.1. Efficiency

Figure 4.1 shows the results of efficiency measurements for the 300W isolated DC-DC converter. It shows the efficiency measured when the input voltage of the 300W isolated DC-DC converter is 36V, 48V, and 75V.

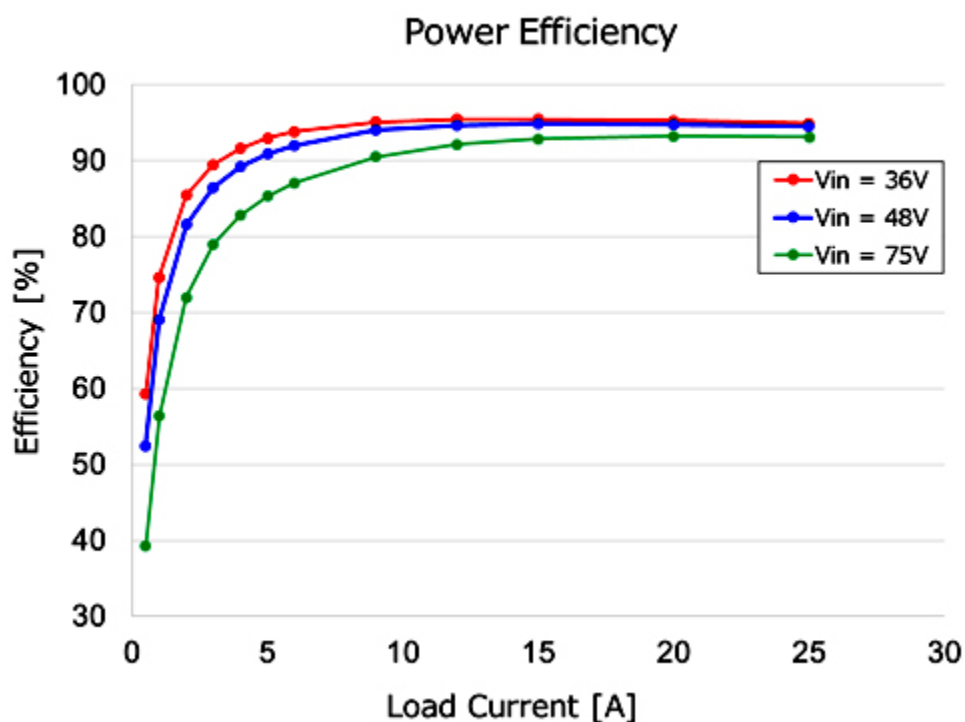


Figure 4.1 Efficiency measurement results (when $V_{in}=36V$, $V_{in}=48V$, and $V_{in}=75V$)

Terms of Use

This terms of use is made between Toshiba Electronic Devices and Storage Corporation ("We") and customers who use documents and data that are consulted to design electronics applications on which our semiconductor devices are mounted ("this Reference Design"). Customers shall comply with this terms of use. Please note that it is assumed that customers agree to any and all this terms of use if customers download this Reference Design. We may, at its sole and exclusive discretion, change, alter, modify, add, and/or remove any part of this terms of use at any time without any prior notice. We may terminate this terms of use at any time and for any reason. Upon termination of this terms of use, customers shall destroy this Reference Design. In the event of any breach thereof by customers, customers shall destroy this Reference Design, and furnish us a written confirmation to prove such destruction.

1. Restrictions on usage

1. This Reference Design is provided solely as reference data for designing electronics applications. Customers shall not use this Reference Design for any other purpose, including without limitation, verification of reliability.
2. This Reference Design is for customer's own use and not for sale, lease or other transfer.
3. Customers shall not use this Reference Design for evaluation in high or low temperature, high humidity, or high electromagnetic environments.
4. This Reference Design shall not be used for or incorporated into any products or systems whose manufacture, use, or sale is prohibited under any applicable laws or regulations.

2. Limitations

1. We reserve the right to make changes to this Reference Design without notice.
2. This Reference Design should be treated as a reference only. We are not responsible for any incorrect or incomplete data and information.
3. Semiconductor devices can malfunction or fail. When designing electronics applications by referring to this Reference Design, customers are responsible for complying with safety standards and for providing adequate designs and safeguards for their hardware, software and systems which minimize risk and avoid situations in which a malfunction or failure of semiconductor devices could cause loss of human life, bodily injury or damage to property, including data loss or corruption. Customers must also refer to and comply with the latest versions of all relevant our information, including without limitation, specifications, data sheets and application notes for semiconductor devices, as well as the precautions and conditions set forth in the "Semiconductor Reliability Handbook".
4. When designing electronics applications by referring to this Reference Design, customers must evaluate the whole system adequately. Customers are solely responsible for all aspects of their own product design or applications. WE ASSUME NO LIABILITY FOR CUSTOMERS' PRODUCT DESIGN OR APPLICATIONS.
5. No responsibility is assumed by us for any infringement of patents or any other intellectual property rights of third parties that may result from the use of this Reference Design. No license to any intellectual property right is granted by this terms of use, whether express or implied, by estoppel or otherwise.
6. THIS REFERENCE DESIGN IS PROVIDED "AS IS". WE (a) ASSUME NO LIABILITY WHATSOEVER, INCLUDING WITHOUT LIMITATION, INDIRECT, CONSEQUENTIAL, SPECIAL, OR INCIDENTAL DAMAGES OR LOSS, INCLUDING WITHOUT LIMITATION, LOSS OF PROFITS, LOSS OF OPPORTUNITIES, BUSINESS INTERRUPTION AND LOSS OF DATA, AND (b) DISCLAIM ANY AND ALL EXPRESS OR IMPLIED WARRANTIES AND CONDITIONS RELATED TO THIS REFERENCE DESIGN, INCLUDING WARRANTIES OR CONDITIONS OF MERCHANTABILITY, FITNESS FOR A PARTICULAR PURPOSE, ACCURACY OF INFORMATION, OR NONINFRINGEMENT.

3. Export Control

Customers shall not use or otherwise make available this Reference Design for any military purposes, including without limitation, for the design, development, use, stockpiling or manufacturing of nuclear, chemical, or biological weapons or missile technology products (mass destruction weapons). This Reference Design may be controlled under the applicable export laws and regulations including, without limitation, the Japanese Foreign Exchange and Foreign Trade Law and the U.S. Export Administration Regulations. Export and re-export of this Reference Design are strictly prohibited except in compliance with all applicable export laws and regulations.

4. Governing Laws

This terms of use shall be governed and construed by laws of Japan.