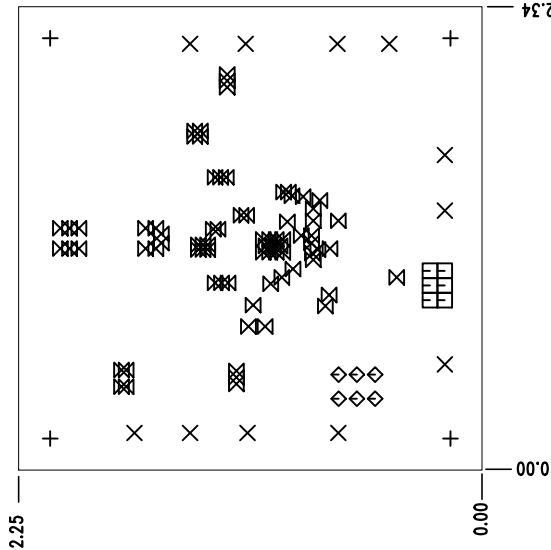
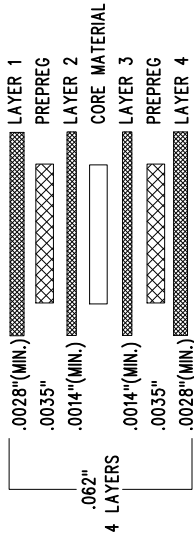


9. ADDITIONAL REQUIREMENT FOR PROTOTYPE FAB ONLY:
1. OUTGOING INSPECTION REPORT (BASED ON ACTUAL MEASUREMENTS AND CROSS SECTION).
10. ADDITIONAL REQUIREMENTS FOR PRODUCTION FAB ONLY:
1. PROVIDE COMPLIANCE CERTIFICATES FOR RoHS, REACH AND CONFLICT-FREE MINERALS.
 2. SOLDERABILITY BOARD WITH TEST RESULTS.
 3. OUTGOING INSPECTION REPORT (BASED ON ACTUAL MEASUREMENTS AND CROSS SECTION).
 4. VACUUM PACKED WITH DESICCANT.
 5. FULL PANEL WITH NO REJECT.

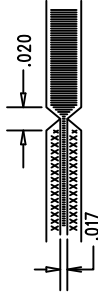


LAYER STRUCTURE



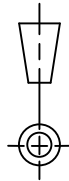
NOTES: UNLESS OTHERWISE SPECIFIED

1. FAB PER IPC-A-600.
2. MATERIAL: -LEAD FREE ASSEMBLY COMPLIANT, ISOLA FR-370HR OR EQUIVALENT.
 - FINISHED THICKNESS TO BE 0.062 +/- .005
 - TOTAL OF 4 LAYERS WITH 2 OZ. CU ON THE OUTER LAYERS AND 1 OZ. CU ON THE INNER LAYERS.
 - FLAMMABILITY RATING: 94 V-0 MINIMUM.
3. SIZE: CUT TO DIMENSIONS AND TOLERANCES SHOWN.
0.00 ARE PRIMARY DATUMS.
4. DRILLING: -DRILL HOLES PER SCHEDULE. PLATE THROUGH HOLES WITH COPPER, 0.001" THICK MIN.
 - ALL HOLE SIZES ARE SPECIFIED AFTER PLATING.
 - HOLE LOCATION TOLERANCES ARE +/-0.003" IN RELATION TO CENTER
5. FINISH: -SMOBC USING LPI BOTH SIDES, COLOR GREEN.
 - GOLD IMMERSION BOTH SIDES.
 - FOR SILKSCREENS: USE WHITE NON-CONDUCTIVE INK.
6. DO NOT ALTER ARTWORK e.g. TO ADD LOGO OR DATE CODE.
7. PCBs ARE TO BE RoHS COMPLIANT.
8. SCORING FOR PANELIZED PCB (PRODUCTION FAB ONLY):



SIZE	QTY	SYM	PLATED	TOL
0.187	4	+	YES	+/-0.003
0.095	11	X	YES	+/-0.003
0.035	6	□	YES	+/-0.003
0.03543	6	◇	YES	+/-0.003
0.012	78	⊗	YES	+/-0.003

UNLESS OTHERWISE SPECIFIED
DIMENSIONS ARE IN INCHES
TOLERANCES:
0.XX = ± 0.01
0.XXX = ± 0.005
INTERPRET DIM AND TOL
PER ASME Y14.5M-1994
THIRD ANGLE PROJECTION



APPROVALS

PCB DES.	HZ
APP ENG.	Kurk M.
SCALE	= NONE



TITLE: FABRICATION DRAWING

HIGH VOLTAGE MONOLITHIC STEP-DOWN CONVERTER

SIZE	IC NO.	REV
N/A	LTC7103EUHE	4
FILENAME:	DC231A-4.PCB	SHT 1 OF 1

1630 MCCARTHY BLVD
MILPITAS, CA 95035
TEL: (408) 432-9800
FAX: (408) 432-9801
LTC CONFIDENTIAL
FOR CUSTOMER USE ONLY