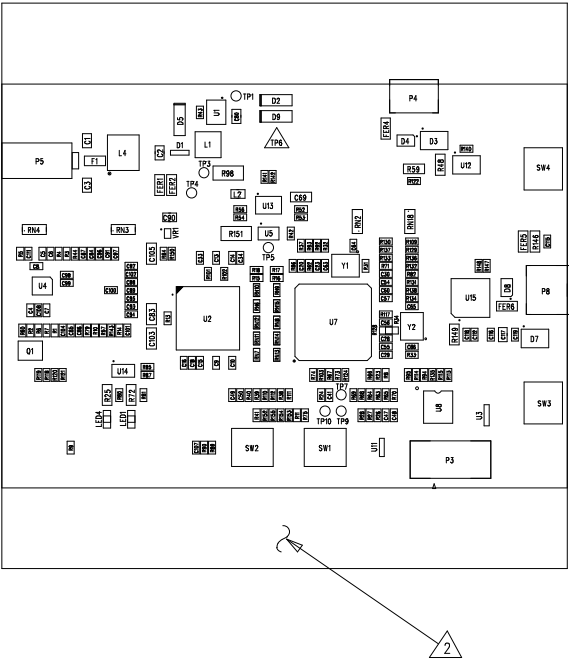



REVISIONS				
REV	DESCRIPTION OF CHANGE	DRFTR	DATE	APPROVED
0.1	NEW RELEASE	C.C.D.	03/03/14	
1.0	UPDATED PER ECO	C.C.D.	10/13/14	
1.1	UPDATED PER ECO	C.C.D.	02/16/15	
2.0	UPDATED PER ECO	C.C.D.	04/23/15	



REFERENCE DESIGNATIONS	
LAST USED	NOT USED
C119	C71-75, C77-78
D9	D6
F1	
FER6	FER3
J3	J1
L4	
LED4	LED2
P8	P1-2, P7
Q1	
R155	R76, R97, R99-100, R116, R123, R139, R144-145
RN18	RN1, RN16
SW4	
TP10	TP2, TP8
U15	U6, U9
VR1	
W1	
Y2	

ASSEMBLY NOTES:

- 1 MASK HOLES FOR TP1, TP3-7, TP9-10 BEFORE SOLDERING.
- 2 BREAK OFF STRIPS AT COMPLETION OF ASSEMBLY.

UNLESS OTHERWISE SPECIFIED DIMENSIONS ARE IN INCHES TOLERANCES ARE : .XX +/- .010 .XXX +/- .005	CONTRACT NO.		 20 Cotton Road Nashua, New Hampshire 03063 (603) 883-2430 FAX (603) 882-2655	
	APPROVALS	DATE		
MATERIAL	DRAWN C.C.D.	04/23/15	ASSEMBLY DRAWING TOP SIDE BLIP2	
FINISH	ENGINEERING			
DO NOT SCALE THIS DRAWING	QUALITY		SIZE D	REV. 2.0
	MANUFACTURING		DWG. NO. ASSMAA0573-2013	
		SCALE 2 : 1	SHEET 1 OF 2	