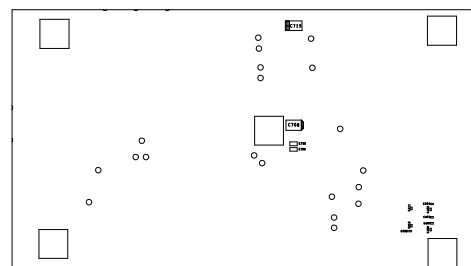



1. 5PCS RUBBER FEET (M012273) - 4PCS ARE TO BE INSTALLED ON EACH CORNER OF THE BOARD AND THE 5TH WILL BE AT THE CENTER. (Refer to the 5 SQUARE BOXES as shown on the board.)



SECONDARY SIDE

 ANALOG DEVICES		WWW DIVISION 804 MODERN STREET WILMINGTON, MA 01887	
SIZE	FSCM NO	DRAWING NUMBER	REV
D	24355	01-038320	A
SCALE	1/1		SHEET 2 OF 2