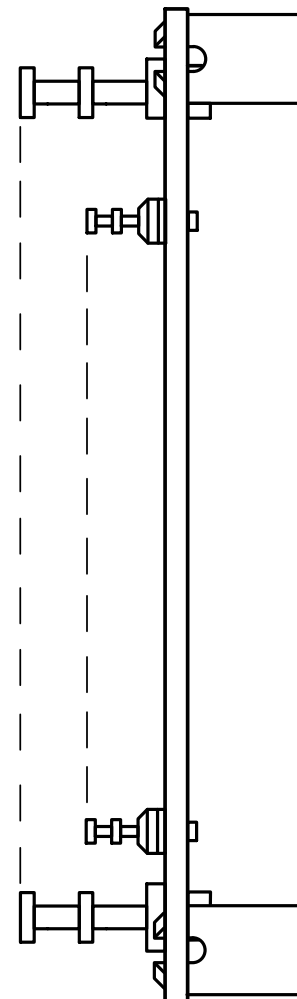
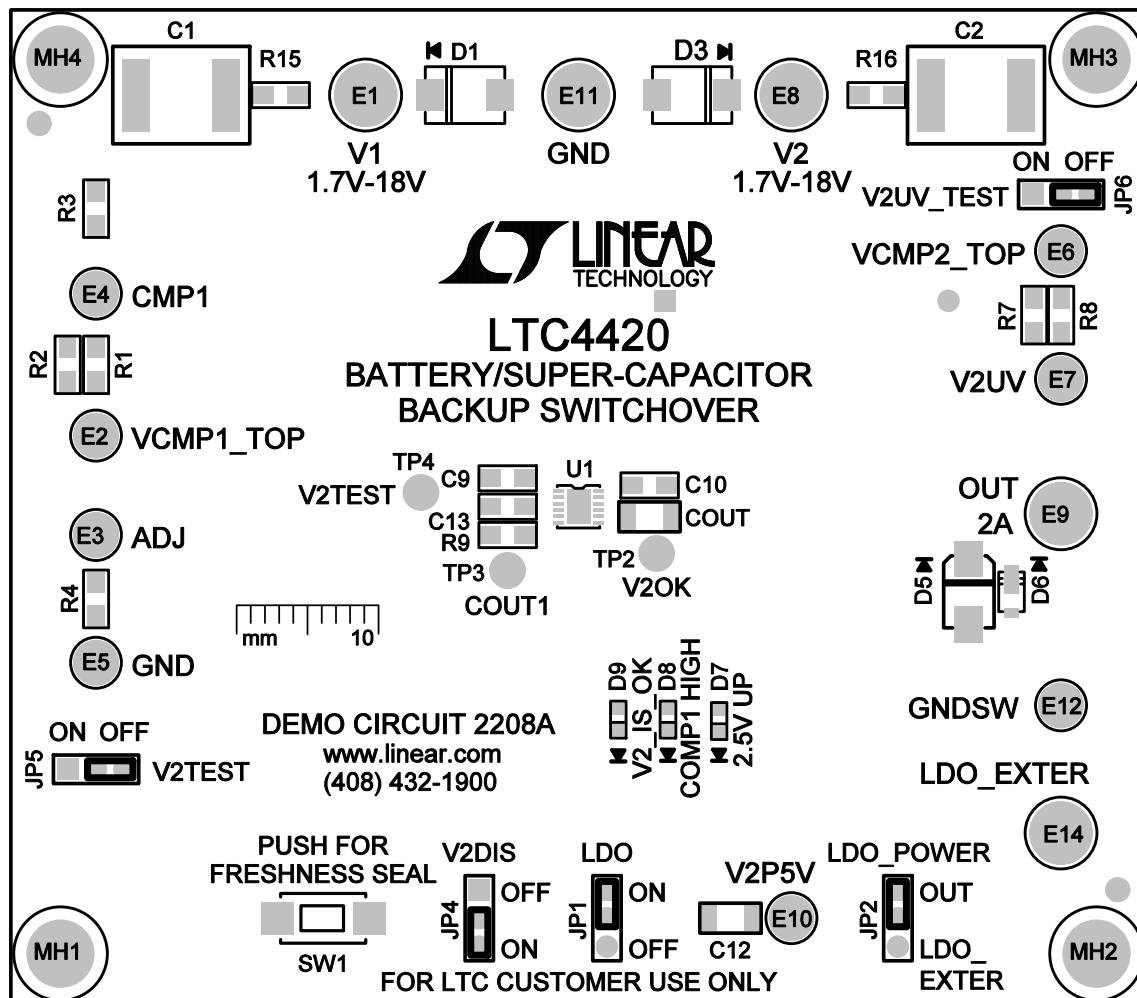


1. WORKMANSHIP SHALL BE IN ACCORDANCE WITH IPC-A-610.
2. DEPANELIZE BOARDS AFTER ASSEMBLY AND ROUTE-OUT THE BREAKOUT TABS ON FOUR SIDES OF THE BOARD EDGE.
3. PARTS TO OMIT WILL BE SPECIFIED ON THE BILL OF MATERIALS. LOCATIONS OF OMITTED PARTS SHALL BE FREE OF SOLDER. MASK THE SOLDER STENCIL WHERE SMT PARTS ARE OMITTED.
4. DO NOT APPLY ANY KIND OF ASSEMBLY STAMP OR QA STAMP



DC2208A REV 3
07/17/15

TOP SILKSCREEN TOP ASSEMBLY DRAWING